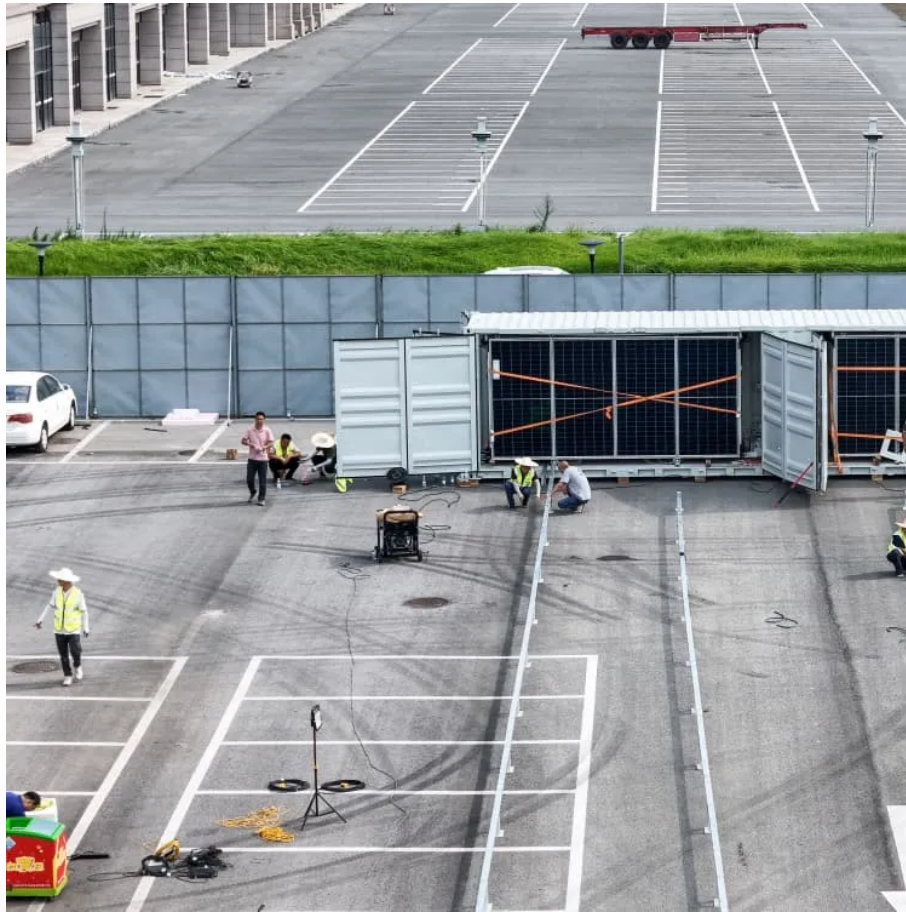


## Kongres Container

# Which communication base station EMS works



## Overview

---

The Federal Communications Commission regulates all forms of communication in the United States and has set aside a list of frequencies set aside for public safety called the Public Safety Spectrum. The Public Safety Spectrum serves the mission-critical communications needs of EMS.

The Federal Communications Commission regulates all forms of communication in the United States and has set aside a list of frequencies set aside for public safety called the Public Safety Spectrum. The Public Safety Spectrum serves the mission-critical communications needs of EMS.

a terminal that receives transmissions of telemetry and voice from the field and transmits messages back, usually through the base station. miniature transmitter that picks up a radio signal and rebroadcasts it, extending the range of a radio communications system. Study with Quizlet and memorize.

The CAREpoint Emergency Department Workstation facilitates seamless communication between EMS and ED teams, enhancing patient care delivery. It consolidates communication data into an easy-to-use system, promotes mobility for seamless call handling, automates reporting and recording, and ensures.

The Motorola MOCOM 10 Low-Band Base Station was one of Motorola's first transistorized base stations, and a popular unit for smaller services on a budget. It was often used as the base station for EMS when EMS were dispatched by another agency such as a law enforcement agency that employed a "full.

The Federal Communications Commission regulates all forms of communication in the United States and has set aside a list of frequencies set aside for public safety called the Public Safety Spectrum. The Public Safety Spectrum serves the mission-critical communications needs of EMS. The public.

Base station (or base radio station, BS) is - according to the International Telecommunication Union 's (ITU) Radio Regulations (RR) [1] - a " land station

in the land mobile service." A base station is called node B in 3G, eNB in LTE (4G), and gNB in 5G. The term is used in the context of mobile.

Many transmissions are between the mobile radio within the ambulance and the dispatcher at a base station. In some EMS systems, simple standard communications are transmitted by pushing a button on a mobile data terminal (MDT) mounted in the ambulance. Carry portable radio whenever you leave unit. How does an EMS system work?

In some EMS systems, simple standard communications are transmitted by pushing a button on a mobile data terminal (MDT) mounted in the ambulance. Carry portable radio whenever you leave unit. Report must be given to destination hospital so it can prepare for arrival.

How does EMS radio communication work?

It may also convert the signal to a telephone signal and send the communications through public or dedicated telephone lines. EMS radio communication takes place in the VHF low band, VHF high band, and UHF band. VHF low band is the radio frequencies from 32-50 megahertz (MHz).

What is a base station in radio communications?

In radio communications, a base station is a wireless communications station installed at a fixed location and used to communicate as part of one of the following: a wireless telephone system such as cellular CDMA or GSM cell site. Base stations use RF power amplifiers (radio-frequency power amplifiers) to transmit and receive signals.

How does EMS rebroadcast a radio signal?

Some rebroadcast by converting signals to radio and others do so by converting to microwaves. It may also convert the signal to a telephone signal and send the communications through public or dedicated telephone lines. EMS radio communication takes place in the VHF low band, VHF high band, and UHF band.

Why is communication important in EMS?

Communication in EMS is essential. Patients must be able to access the system, the system must be able to dispatch units, EMTs must have a means of communicating with medical direction and receiving facility, and EMTs must be able to communicate vital information to other personnel.

What frequency does EMS radio communication take place in?

EMS radio communication takes place in the VHF low band, VHF high band, and UHF band. VHF low band is the radio frequencies from 32-50 megahertz (MHz). They are able to follow the shape of the earth allowing communication over long distances. These frequencies are more susceptible to interference from, weather, buildings, and electrical equipment.

## Which communication base station EMS works

---

## Contact Us

---

For catalog requests, pricing, or partnerships, please visit:  
<https://www.drugiswiatowykongrespolakow.pl>