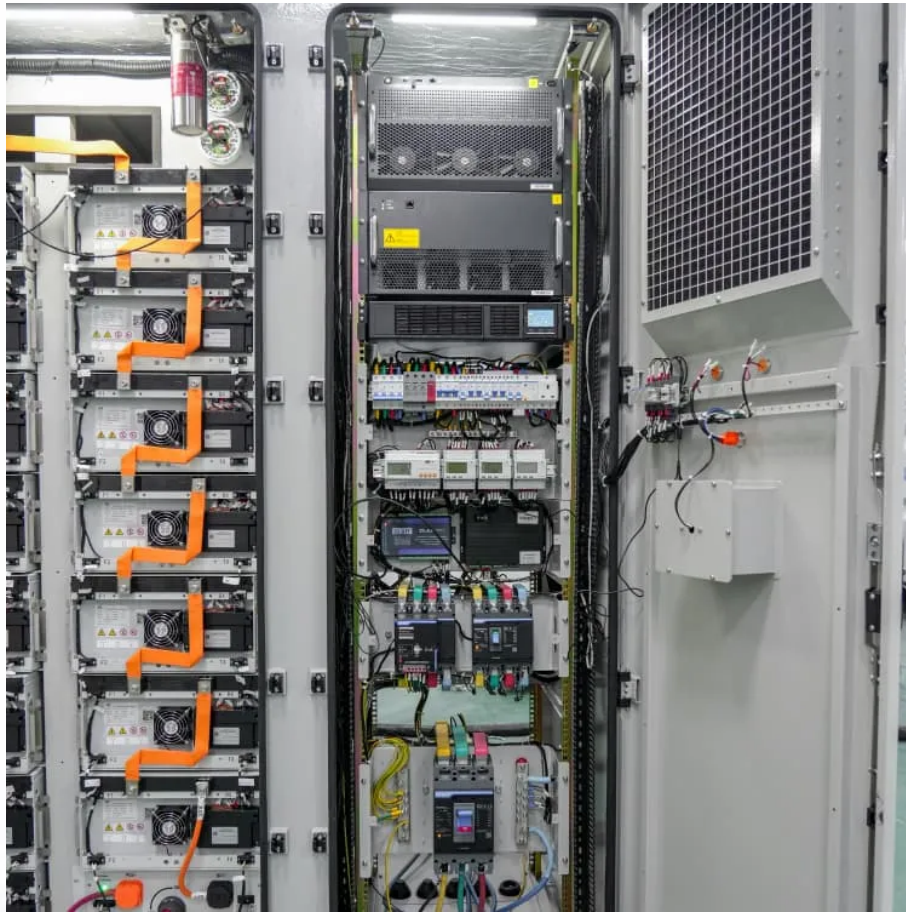


Kongres Container

What is the normal base station communication frequency



Overview

A VHF (Very High Frequency) base station is a fixed communication device that operates within the 30 MHz to 300 MHz frequency range.

A VHF (Very High Frequency) base station is a fixed communication device that operates within the 30 MHz to 300 MHz frequency range.

What is Base Station?

A base station represents an access point for a wireless device to communicate within its coverage area. It usually connects the device to other networks or devices through a dedicated high bandwidth wire of fiber optic connection. Base stations typically have a transceiver.

This document establishes a minimum level and standard configuration of programming for interoperability and common channels into base stations used by public safety in New York State. The minimum level of monitoring is the direct (simplex) configuration of the channel. The standard plan in New.

As of 2010 aeronautical enroute and flight test stations may use 8.33 kHz spaced channels in the 121.4-123.6, 128.825-132.0 and 136.5-136.875 MHz ranges. SAR; Temp. ATCTs and Fly-ins with SAR Coordination ATC (Formerly Air Carrier Advisory. FSS Uses Phased Out) Operational Control. Coordinated by.

Increasing base station transmitter power will nearly always increase the communications range, but usually by less than anticipated. For aircraft at altitudes below 8000 feet agl, even a relatively low power transmitter will reach the radio horizon with an acceptable signal level. Thus any.

Base station (or base radio station, BS) is – according to the International Telecommunication Union 's (ITU) Radio Regulations (RR) [1] – a " land station in the land mobile service." A base station is called node B in 3G, eNB in LTE (4G), and gNB in 5G. The term is used in the context of mobile.

The base station antennas transmit and receive RF (radio frequency) signals,

or radio waves, to and from mobile phones near the base station. Without these radio waves, mobile communications would not be possible. Radio waves have been used for communication for more than 100 years. Radio and.

What is the normal base station communication frequency

Contact Us

For catalog requests, pricing, or partnerships, please visit:
<https://www.drugiswiatowykongrespolakow.pl>