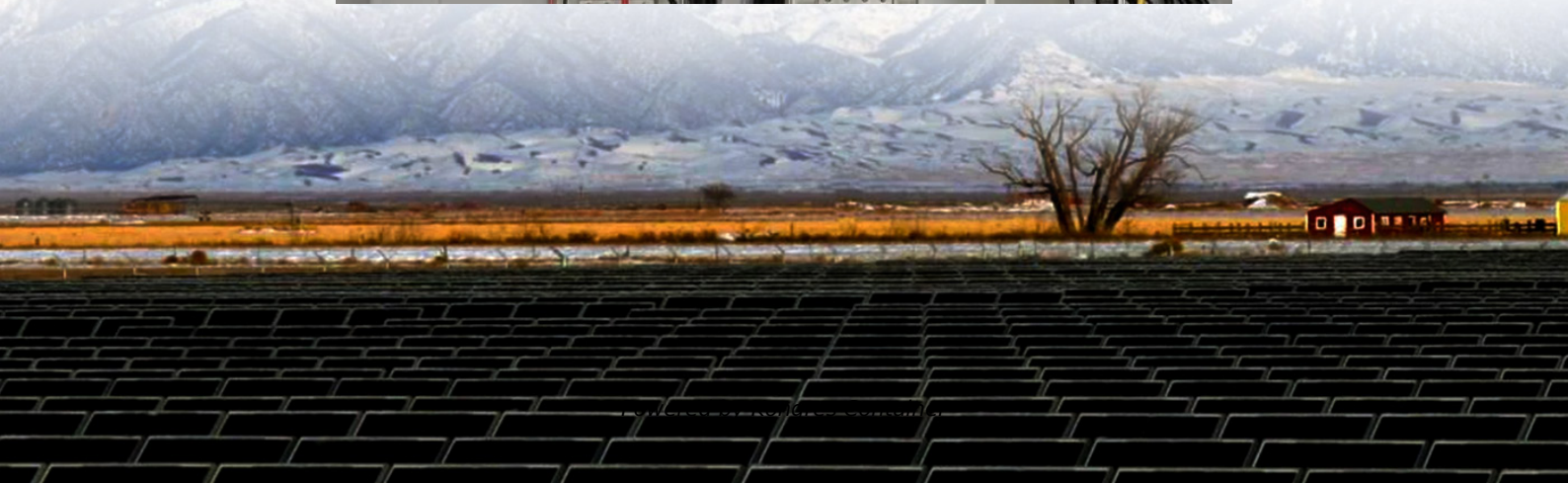
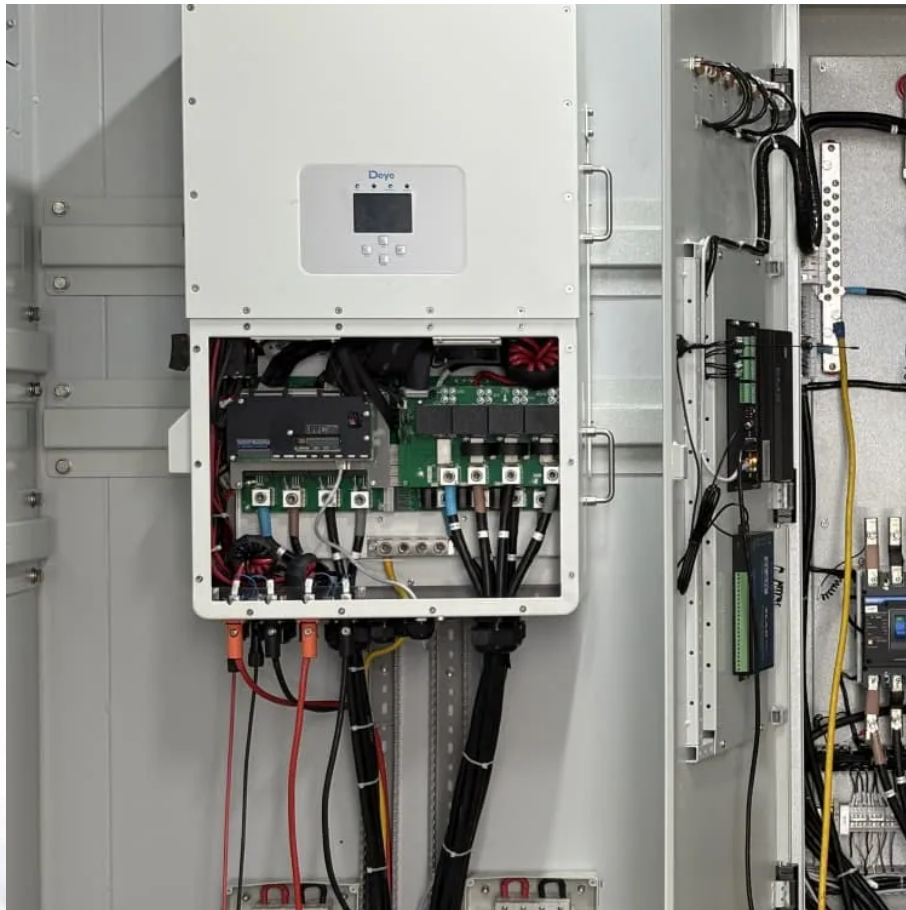


Kongres Container

What is the most suitable wattage for a 24v battery inverter



Overview

A 12V 150ah battery can store 1800 watts so a 2000 watt inverter is the right size. A 24V 150ah battery holds up to 3600 watts, which means you should use a 4000 watt inverter. Inverter capacity is measured in watts.

A 12V 150ah battery can store 1800 watts so a 2000 watt inverter is the right size. A 24V 150ah battery holds up to 3600 watts, which means you should use a 4000 watt inverter. Inverter capacity is measured in watts.

If you're not running your inverter at its full capacity, For Example, let's say you have a 1000W inverter but your daily total load at a time doesn't exceed 600 AC watts so instead of entering 1000 in the inverter size box you can enter 600 which will give a battery size according to your load To.

A 12V inverter is designed to handle lower power output and is typically suited for smaller applications, while a 24V inverter offers higher efficiency and can power larger systems without drawing excessive current. >>See also Living Off The Grid Without Spending Money A Beginner's Guide One of the.

The Victron Energy Quattro 5000VA 24-Volt inverter stands out with its robust power output of 5000 watts, making it suitable for handling significant electrical loads. Its pure sine wave output ensures compatibility with sensitive electronics, providing reliable and clean power. This feature is.

Typically, a 12V 200Ah battery supports up to about 2400W, while higher voltage configurations like 24V or 48V allow larger inverter sizes. Choosing a pure sine wave inverter matched to your load ensures safe, efficient power delivery and extends battery life. Wholesale lithium golf cart batteries.

A 12V 150ah battery can store 1800 watts so a 2000 watt inverter is the right size. A 24V 150ah battery holds up to 3600 watts, which means you should use a 4000 watt inverter. Inverter capacity is measured in watts. Battery sizes are measured in amp hours, so you need to find out how many watts a.

During our research, we discovered that most inverters range in size from 300 watts up to over 3000 watts. In this article, we guide you through the different

inverter sizes. Additionally, you'll learn what appliances you can power and how you can select the right inverter size according to your.

What is the most suitable wattage for a 24v battery inverter

Contact Us

For catalog requests, pricing, or partnerships, please visit:
<https://www.drugiswiatowykongrespolakow.pl>