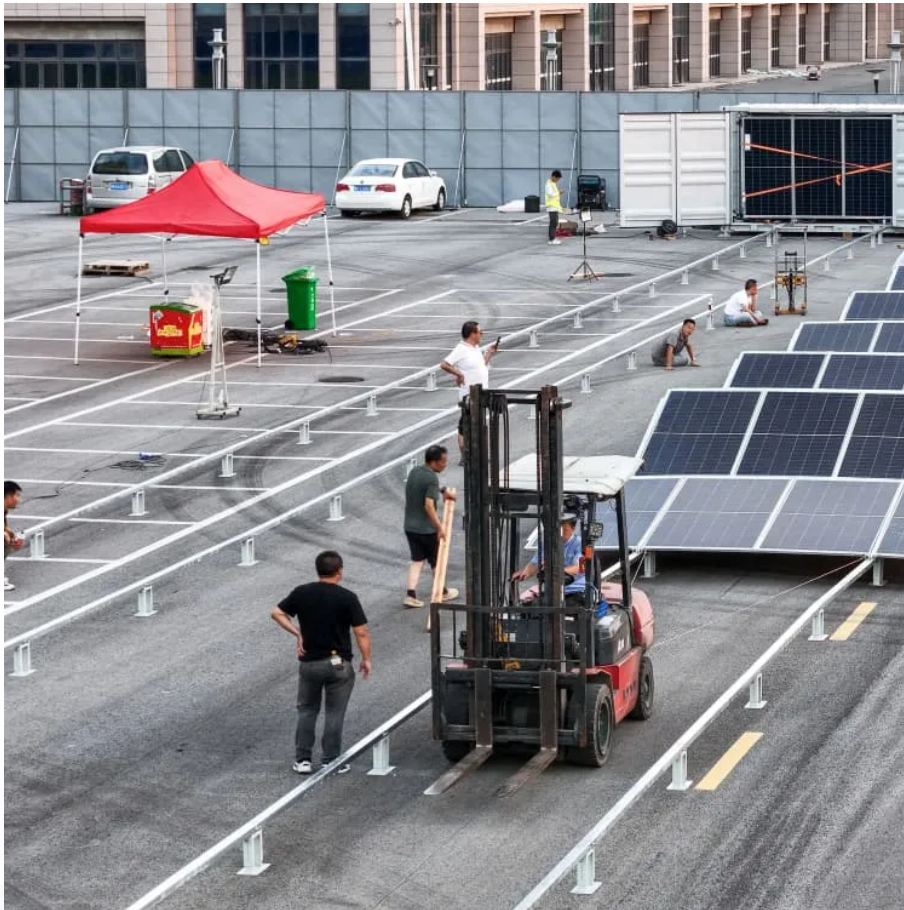


Kongres Container

What does double-glass mean for n-type modules



Overview

Compared to a transparent backsheet, the glass layer has better light transmittance (dual glass around 94% while transparent 89%), which means more add-on value to a higher bifacial factor of N-type technology that can absorb and transmit as much as possible sunlight from the rear sides of the module. What is a dual glass module?

Our dual glass modules use the same internal circuit connection as a traditional glass-backsheet module but feature heat-strengthened glass on both sides. We produce the back glass with a unique drilling technique that ensures the reliability of both the junction box installation and the module.

Why are glass-glass bifacial modules becoming more popular?

Due to their better reliability, glass-glass bifacial configurations have a larger portion of the worldwide bifacial module market share. Glass shortages, weight concerns for larger format modules, and decreasing prices for transparent backsheets have caused some manufacturers to switch to a glass-transparent backsheet structure.

Are glass-glass modules frameless?

Glass-glass modules can also be frameless, which helps eliminate the cost of an extruded aluminum frame. However, glass-glass models with frames have a lower risk of breakage. As a result, most glass-glass modules come with frames in place. Compared with standard glass backsheet technology, framed modules with two layers of glass are heavier.

Are bifacial double-glass modules a good choice?

There has been a notable shift from the initial single-facial single-glass modules to bifacial double-glass modules. Double-glass modules, with their performance in the face of salt mist, high temperatures and high humidity, have won the market's favour. However, this trend is not without its risks.

Does Trina Solar have a dual glass bifacial module?

However, Trina Solar has made such a breakthrough by abandoning the backsheet and developing the brand-new dual glass module. Trina Solar Vertex TSM-DEG21C.20 (670 W) framed dual-glass bifacial module.

Why should you choose a dual-glass module?

From this point of view, the structural design of our dual-glass modules overcomes problems such as the outdoor degradation-induced material aging and the power attenuation that frequently affects traditional backsheets. In addition, our design avoids distinctive weak points in thin-film modules, such as low efficiency and high vulnerability.

What does double-glass mean for n-type modules

Contact Us

For catalog requests, pricing, or partnerships, please visit:
<https://www.drugiswiatowykongrespolakow.pl>