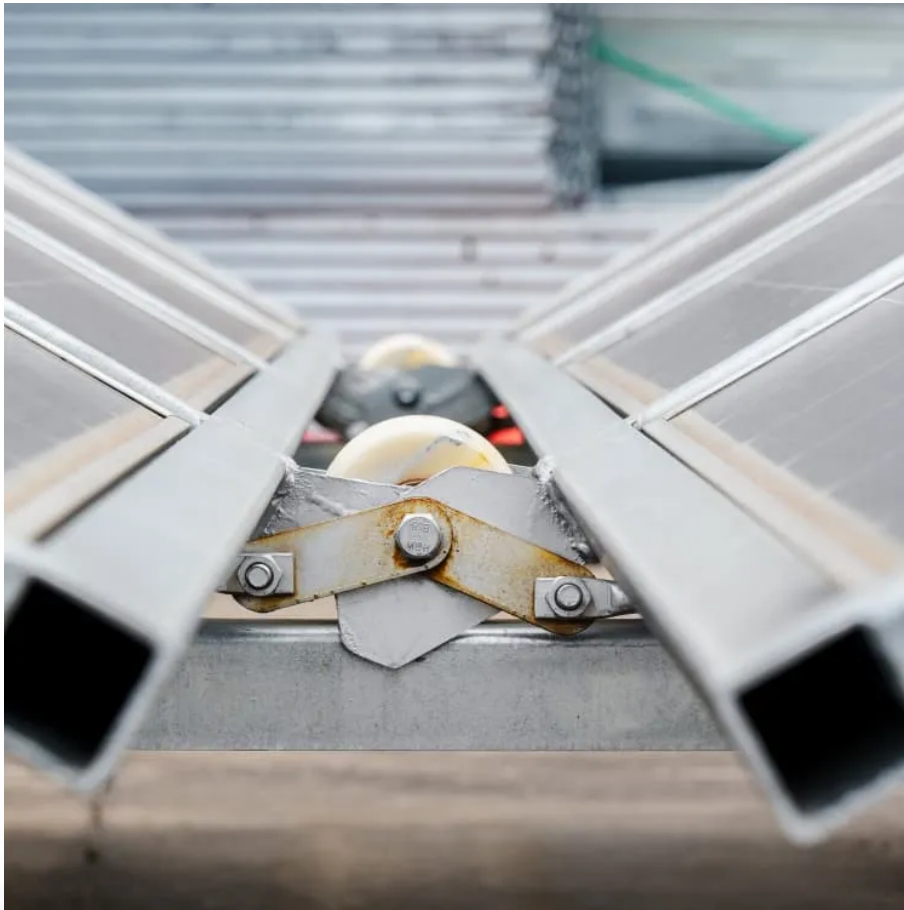


## Kongres Container

# What are the integrated energy solutions for 5G base stations



## Overview

---

How to choose a 5G energy-optimised network?

Certain factors need to be taken into consideration while dealing with the efficiency of energy. Some of the prominent factors are such as traffic model, SE, topological distribution, SINR, QoS and latency. To properly examine an energy-optimised network, it is very crucial to select the most suitable EE metric for 5G networks.

What is the energy-saving technology of base stations?

This technical report focuses on energy-saving technology of base stations. Some energy saving technologies since 4G era will be explained in details, while artificial intelligence and big data technology will be introduced in response to the requirement of an intelligent and self-adaptive energy saving solution.

Is a 5G energy saving solution enough?

It also analyses how enhanced technologies like deep sleep, symbol aggregation shutdown etc., have been developing in the 5G era. This report aims to detail these fundamentals. However, it is far away from being enough, a revolutionized energy saving solution should be taken into consideration.

Can network energy saving technologies mitigate 5G energy consumption?

This technical report explores how network energy saving technologies that have emerged since the 4G era, such as carrier shutdown, channel shutdown, symbol shutdown etc., can be leveraged to mitigate 5G energy consumption.

What is integrated energy-saving strategy?

Execution Strategy: The integrated energy-saving strategy is sent to the network management system to perform the energy-saving operations on 5G base station, such as deep sleep, carrier shutdown, symbol shutdown and corresponding activation time window.

What is the ITU-T Technical Report on 5G base station?

This document contains Version 1.0 of the ITU-T Technical Report on “Smart Energy Saving of 5G Base Station: Based on AI and other emerging technologies to forecast and optimize the management of 5G wireless network energy consumption” approved at the ITU-T Study Group 5 meeting held online, 20th May, 2021. 3.1.

## What are the integrated energy solutions for 5G base stations

---

### Contact Us

---

For catalog requests, pricing, or partnerships, please visit:  
<https://www.drugiswiatowykongrespolakow.pl>