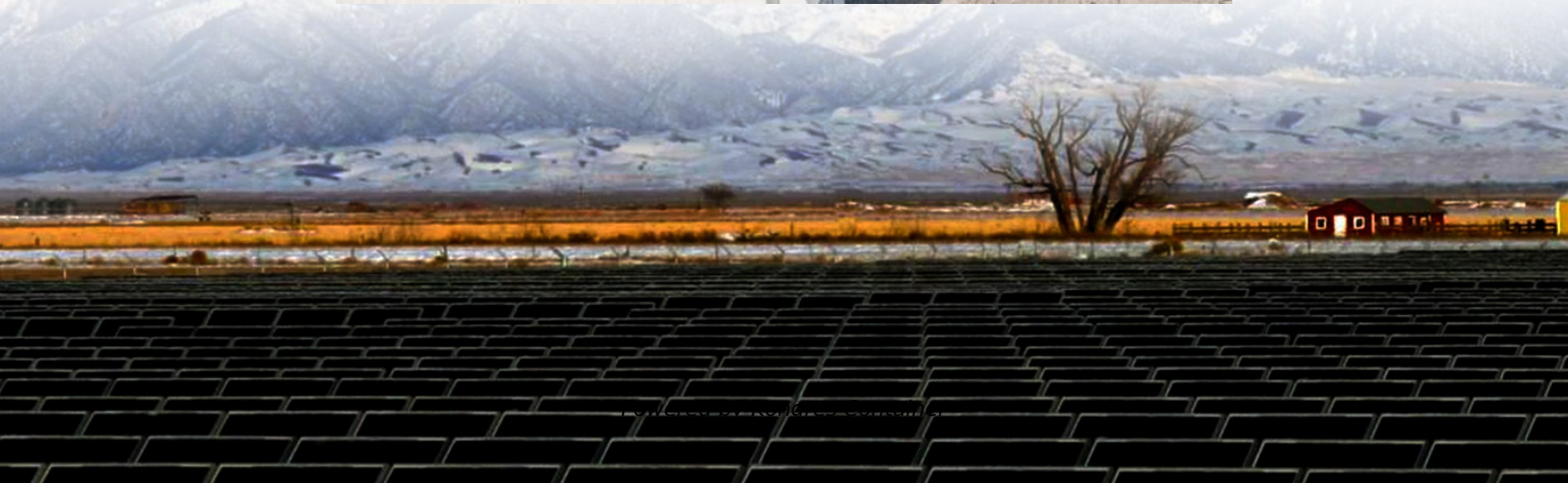
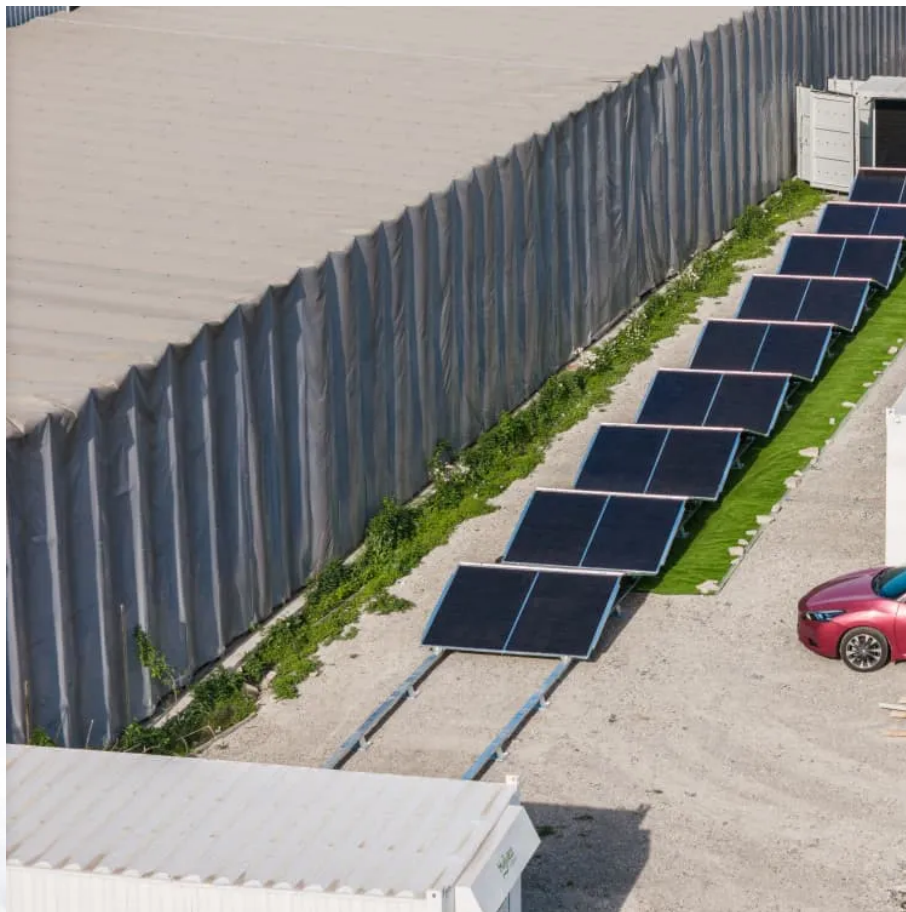


Kongres Container

What are the grid-connected inverters for Irish communication base stations



Overview

Jan 20, 2024 · This article presents an autonomous control architecture for grid-interactive inverters, focusing on the inverters providing power in a microgrid during utility outages.

Jan 20, 2024 · This article presents an autonomous control architecture for grid-interactive inverters, focusing on the inverters providing power in a microgrid during utility outages.

Unlike standard grid-following inverters that simply inject current into an existing grid waveform, a grid-forming inverter behaves as a controllable voltage source. It 'forms' the grid by setting a reference voltage and frequency, and automatically adjusts its output to balance changes in load or.

Many remote areas lack access to traditional power grids, yet base stations require 24/7 uninterrupted power supply to maintain stable communication services. For base stations located in deserts or other extreme environments, independent power supply is essential, as these areas are not only.

MV-inverter station: centerpiece of the PV eBoP solution Practical as well as time- and cost-saving: The MV-inverter station is a convenient "plug-and-play" solution offering high power . To further explore the energy-saving potential of 5 G base stations, this paper proposes an energy-saving.

"GFM converter" is used as a common terminology for either HVDC converter stations, remote-end HVDC converter stations or DC connected PPMs which are in GFM control mode and fulfill the Distributed generation (DG) systems are becoming more popular due to several benefits such as clean energy.

How does a grid forming inverter work?

Unlike standard grid-following inverters that simply inject current into an existing grid waveform, a grid-forming inverter behaves as a controllable voltage source. It 'forms' the grid by setting a reference voltage and frequency, and automatically adjusts its.

Can the Tronyan communication base station support both 4G and 5G networks?

Yes, Takashi, our communication base stations are designed to support both 4G and 5G networks, ensuring The Telecom Base Station Intelligent Grid-PV Hybrid Power Supply System helps telecom operators to achieve "carbon.

What are the grid-connected inverters for Irish communication base

Contact Us

For catalog requests, pricing, or partnerships, please visit:
<https://www.drugiswiatowykongrespolakow.pl>