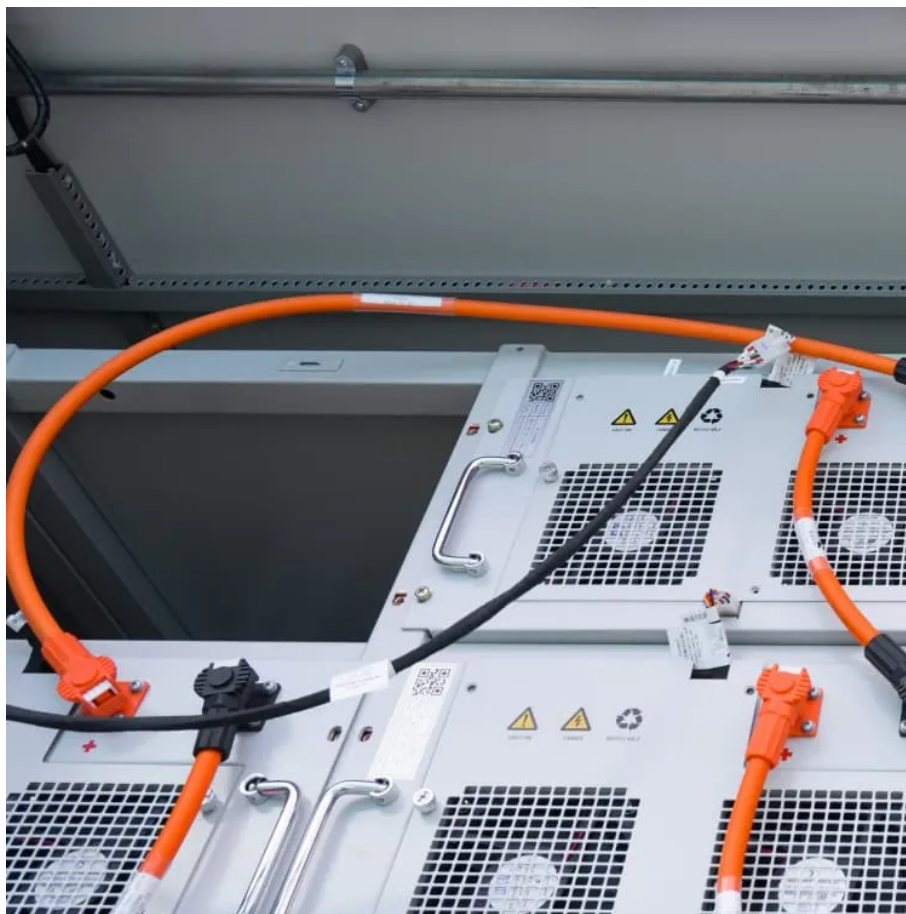


## Kongres Container

# Wattage of solar charging panel



## Overview

---

Here's a chart about what size solar panel you need to charge your 12v 120ah lead-acid (50% depth of discharge) and lithium battery (100% depth of discharge) with different peak sun hours and using an MPPT charge controller.

Note: If you already have a solar panel and want to know how long it will take to charge your battery, use our solar battery charge time calculator.

1. Enter battery Capacity in amp-hours (Ah): For a 100ah battery, enter 100. If the battery capacity is mentioned in watt-hours (Wh), divide Wh by the battery's voltage (v). 2. Enter battery volts (V): Is this a 12, 24, or 48-volt battery?

3. Select battery type: Is this a lead-acid, AGM, or lithium-ion (LiFePO4) battery?

4. Enter battery depth of d.

Follow these 6 steps to calculate the estimated required solar panel size to recharge your battery in desired time frame.

Here's a chart about what size solar panel you need to charge different capacity 12v lead-acid and Lithium (LiFePO4) batteries in 6 peak sun hours using an MPPT charge controller.

## Wattage of solar charging panel

---

## Contact Us

---

For catalog requests, pricing, or partnerships, please visit:  
<https://www.drugiswiatowykongrespolakow.pl>