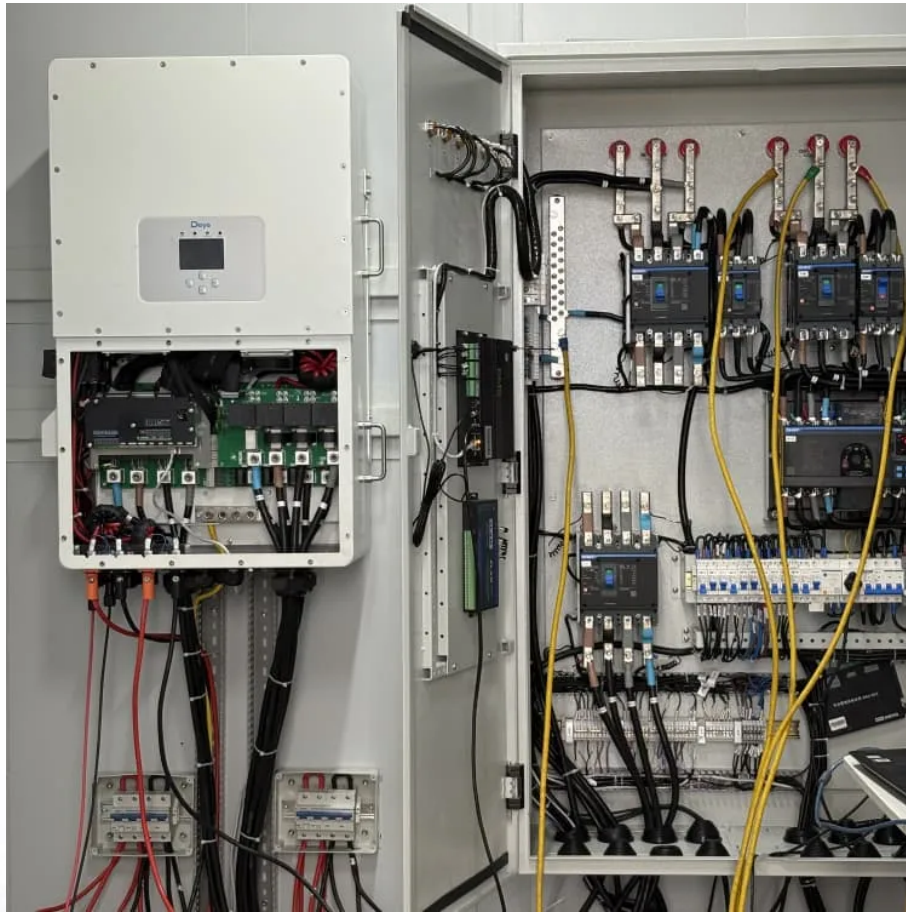


Kongres Container

Types of solar grid-connected inverters



Overview

In this blog, we will cover the common types of Grid-Tied or Grid Connected Solar Inverters used in roof-top Solar Power Plants: String Inverters, SolarEdge Optimizer System, and Enphase Micro-inverter System.

In this blog, we will cover the common types of Grid-Tied or Grid Connected Solar Inverters used in roof-top Solar Power Plants: String Inverters, SolarEdge Optimizer System, and Enphase Micro-inverter System.

Considering the classification based on the mode of operation, inverters can be classified into three broad categories: Inverter classification according to Interconnection types is discussed in EME 812 (11.4. Grid connection and role of inverters). Aside from the modes of operation, grid-connected.

An inverter is one of the most important pieces of equipment in a solar energy system. It's a device that converts direct current (DC) electricity, which is what a solar panel generates, to alternating current (AC) electricity, which the electrical grid uses. In DC, electricity is maintained at.

Basically, inverters are devices that convert the direct current (DC) to alternating current (AC) so that it can be used by appliances. Normal inverters use direct current from their batteries, but solar inverters are a bit different. They receive direct current from solar panels that convert solar.

How a solar inverter works: DC power from solar panels is converted to AC power by the solar inverter, which can be used by home appliances or fed into the electricity grid. While solar inverters are the most common type of inverter used for residential solar, they are just one of several inverter.

In this blog, we will cover the common types of Grid-Tied or Grid Connected Solar Inverters used in roof-top Solar Power Plants: String Inverters, SolarEdge Optimizer System, and Enphase Micro-inverter System. Solar Power Plants that use only utility grid as a complementary source of power are.

Solar inverters convert direct current (DC) obtained from solar panels into alternating current (AC), allowing electricity to be used in homes and

businesses. However, each type of inverter addresses a different need and each affects the efficiency of the system. In this article, we will examine.

Types of solar grid-connected inverters

Contact Us

For catalog requests, pricing, or partnerships, please visit:
<https://www.drugiswiatowykongrespolakow.pl>