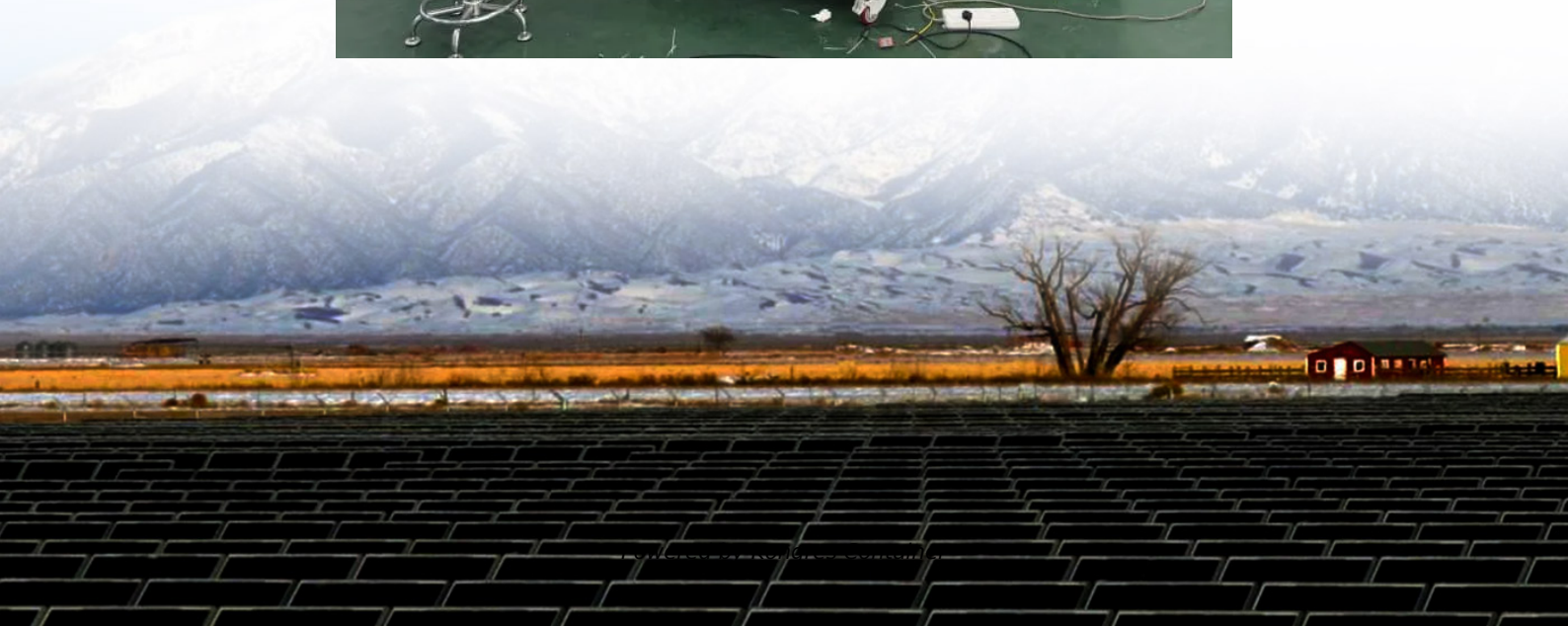
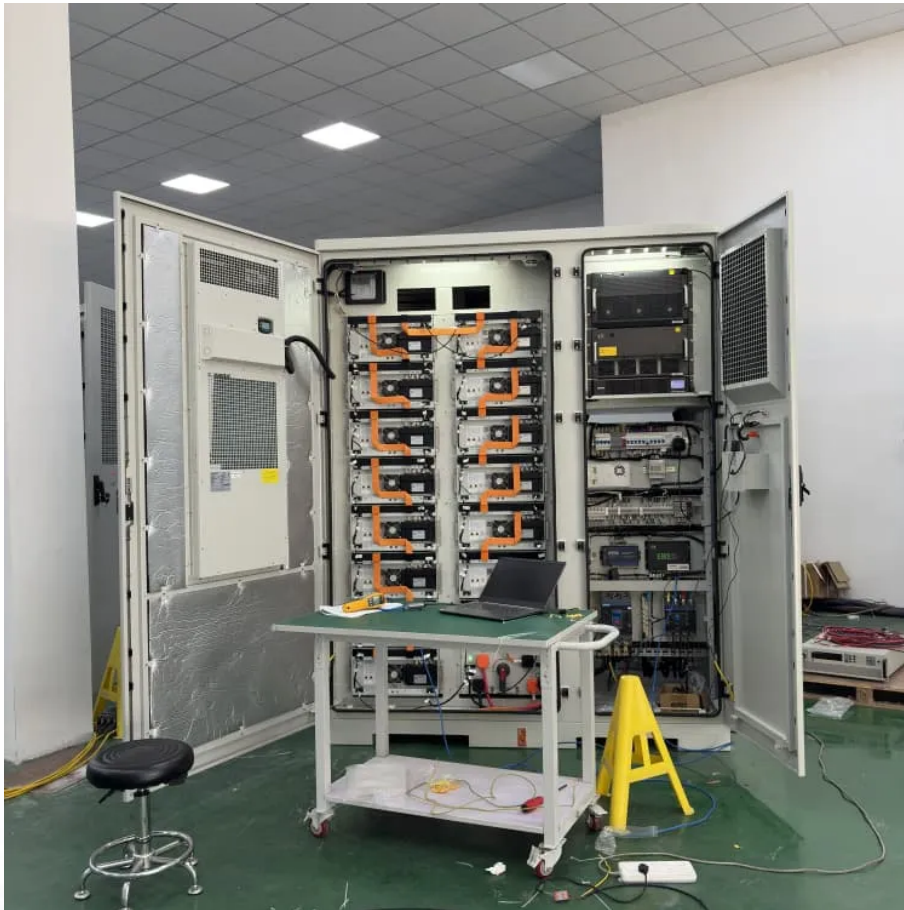


Kongres Container

Tuvalu communication base station inverter construction



Overview

What is a base station connection diagram?

The connection diagram provides a clear overview of how the main base station equipment operates within the network. Surrounding this central "brain" are the "Four Guardians" that ensure seamless functionality: Power Supply: Provides a steady and uninterrupted energy source to keep the equipment operational.

What is a base station power supply?

This acts as the "blood supply" of the base station, ensuring uninterrupted power. It includes: AC distribution box: Distributes mains power and offers surge protection. Switch-mode power supply: Converts and stabilizes power while managing DC output. Battery banks: Serve as backup power to keep systems running during outages. 3.

What is a communication base station?

In the vast telecommunications network, communication base stations play a frontline role. Positioned closest to end users, they serve as gateways for processing customer requests and managing data flow. In the words of "Interesting Communication Engineering Drawings," these stations act like "business trackers," always vigilant to:

How do outdoor base stations work?

Outdoor base stations integrate all essential systems into a single Integrated Cabinet, designed to endure harsh conditions like direct sunlight, rain, and extreme temperatures. These units protect the equipment while ensuring efficient functionality. Towers are crucial for mounting antennas at high elevations, ensuring wide signal reach.

What is a BBU in a base station?

The BBU is a key element of the base station's architecture. Unlike the large

cabinet setups of the past, modern BBUs are compact and resemble distributed devices, similar in size to DVD players. Function: Processes baseband signals, which are low-frequency signals in their raw, unmodulated state.

Tuvalu communication base station inverter construction

Contact Us

For catalog requests, pricing, or partnerships, please visit:
<https://www.drugiswiatowykongrespolakow.pl>