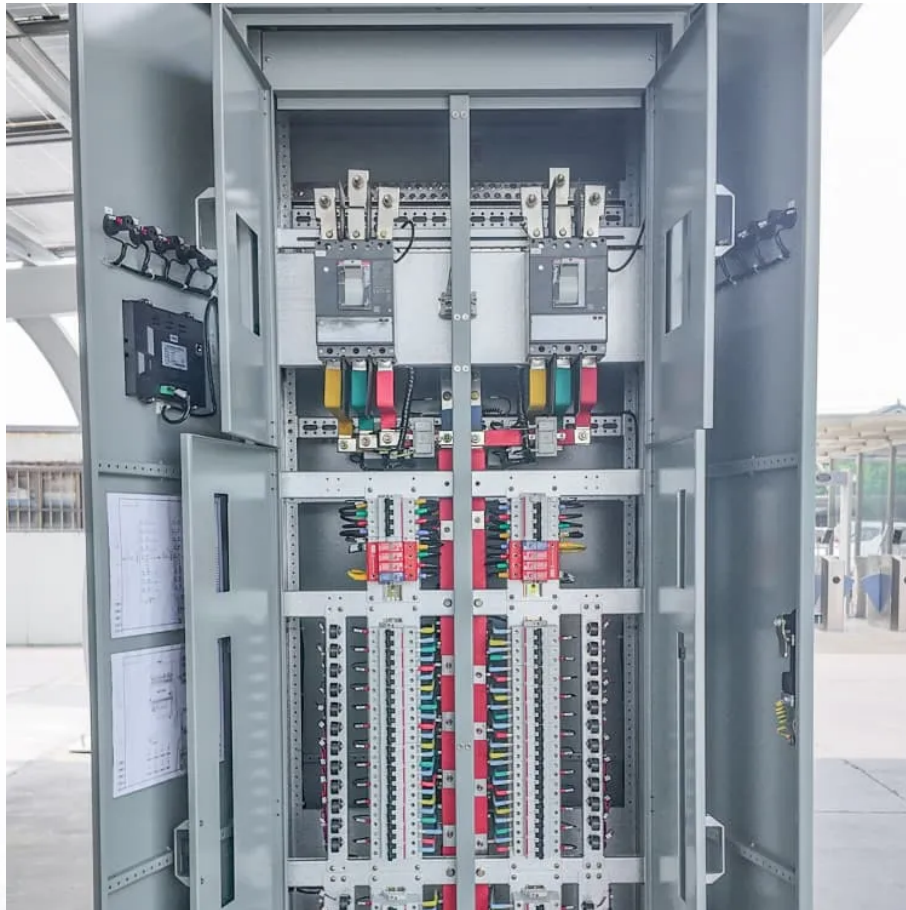


## Kongres Container

**The total voltage of the base station battery pack is too high**



## Overview

---

What makes a telecom battery pack compatible with a base station?

Compatibility and Installation Voltage Compatibility: 48V is the standard voltage for telecom base stations, so the battery pack's output voltage must align with base station equipment requirements. Modular Design: A modular structure simplifies installation, maintenance, and scalability.

What is the difference between a BMS and a total pack voltage sensor?

In the context of a battery system, a Battery Management System (BMS) manages, protects, and balances the battery pack. A total pack voltage sensor is a component within the BMS that provides the system with a measurement of the total voltage of the battery pack.

Why is my battery bank too high?

Too high a voltage in a battery bank is either due to an improper setting in the charge controller or in the inverter's charger. Depending on your battery type, it will be necessary to have digital voltmeter available to measure voltage at the charge controller, the battery and the inverter terminals.

Which battery is best for telecom base station backup power?

Among various battery technologies, Lithium Iron Phosphate (LiFePO<sub>4</sub>) batteries stand out as the ideal choice for telecom base station backup power due to their high safety, long lifespan, and excellent thermal stability.

What is a total pack voltage sensor in a BMS?

In the context of a BMS, a total pack voltage sensor is used to provide the BMS with a measurement of the total voltage of the battery pack. In versions of the firmware 2.6.5 and prior, the voltage measured by the total pack voltage sensor is used for enforcing the minimum and maximum pack voltage limits.

How is the pack voltage determined?

The pack voltage can be determined by calculating it from the individual cell voltages rather than measured by the total pack voltage sensor. The BMS can be set up to ignore any difference in voltage between the two methods.

## The total voltage of the base station battery pack is too high

---

### Contact Us

---

For catalog requests, pricing, or partnerships, please visit:  
<https://www.drugiswiatowykongrespolakow.pl>