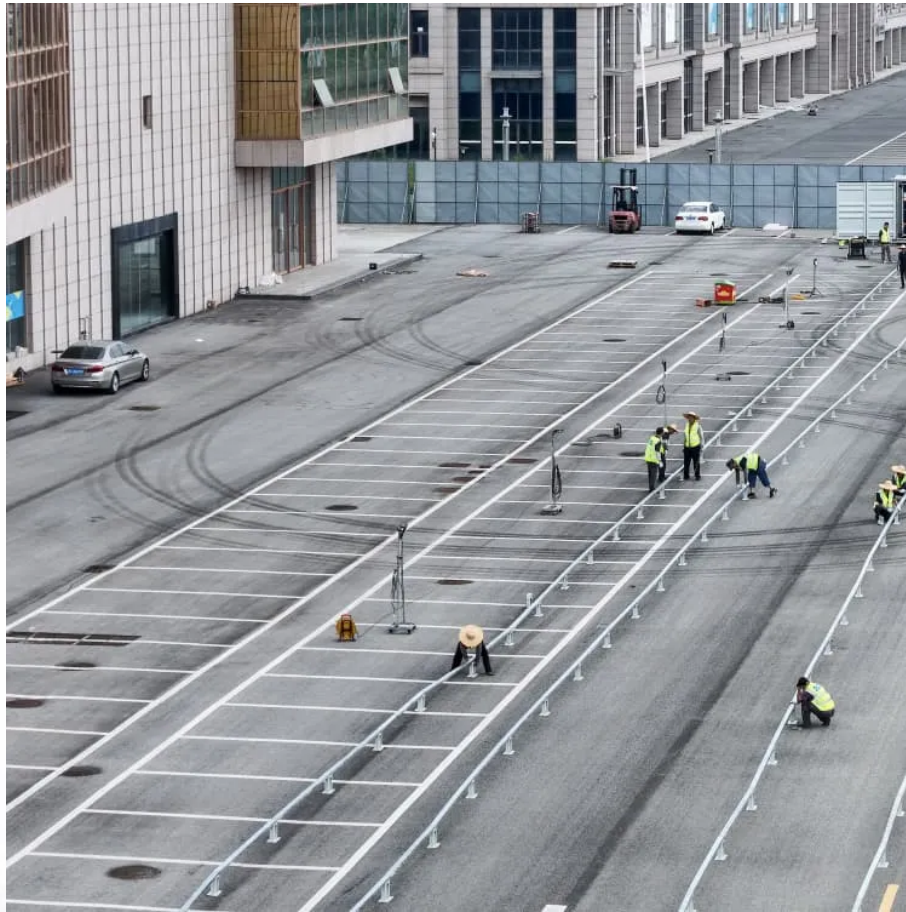


Kongres Container

The functions of each module of the energy storage system



Overview

The components of energy storage systems are designed to harness and manage energy reserves effectively, addressing both short-term and long-term energy needs. Numerous technologies exist, each providing unique advantages and serving distinct purposes within integrated energy frameworks.

The components of energy storage systems are designed to harness and manage energy reserves effectively, addressing both short-term and long-term energy needs. Numerous technologies exist, each providing unique advantages and serving distinct purposes within integrated energy frameworks.

Energy storage components are essential elements that play a pivotal role in capturing, retaining, and distributing energy for various applications, including renewable energy systems, electric vehicles, and grid stability. 1. Key components include batteries, capacitors, and flywheels, which serve.

At the heart of every BESS are the battery modules. These modules, made of electrochemical cells, store the actual energy. For most large-scale projects, lithium-ion batteries are the preferred choice. However, other chemistries like lead-acid, sodium-based, or redox flow batteries may also be used.

The battery is the basic building block of an electrical energy storage system. The composition of the battery can be broken into different units as illustrated below. At the most basic level, an individual battery cell is an electrochemical device that converts stored chemical energy into.

Battery Energy Storage Systems (BESS) are pivotal in modern energy landscapes, enabling the storage and dispatch of electricity from renewable sources like solar and wind. As global demand for sustainable energy rises, understanding the key subsystems within BESS becomes crucial. These include the.

An energy storage system (ESS) is like an “energy manager,” capable of storing excess electricity and releasing it when needed. Its core components

include battery modules, a Battery Management System (BMS), a Power Conversion System (PCS), and an Energy Management System (EMS). These components.

Energy management systems (EMSs) are required to utilize energy storage effectively and safely as a flexible grid asset that can provide multiple grid services. An EMS needs to be able to accommodate a variety of use cases and regulatory environments. 1. Introduction Energy storage applications can.

The functions of each module of the energy storage system

Contact Us

For catalog requests, pricing, or partnerships, please visit:
<https://www.drugiswiatowykongrespolakow.pl>