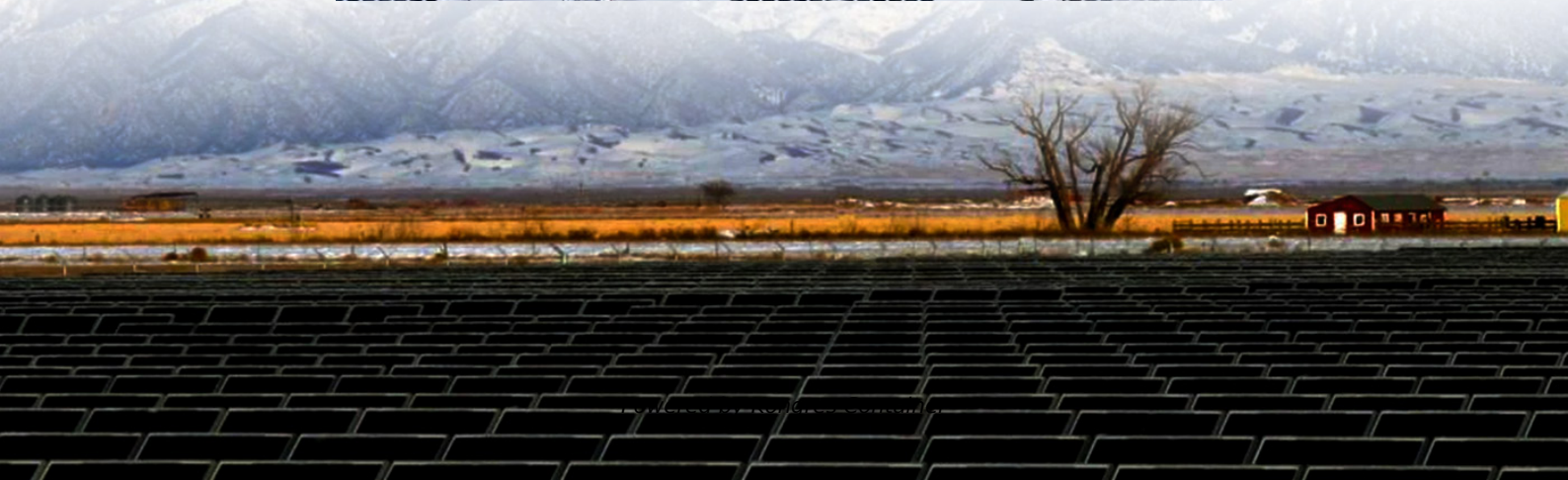
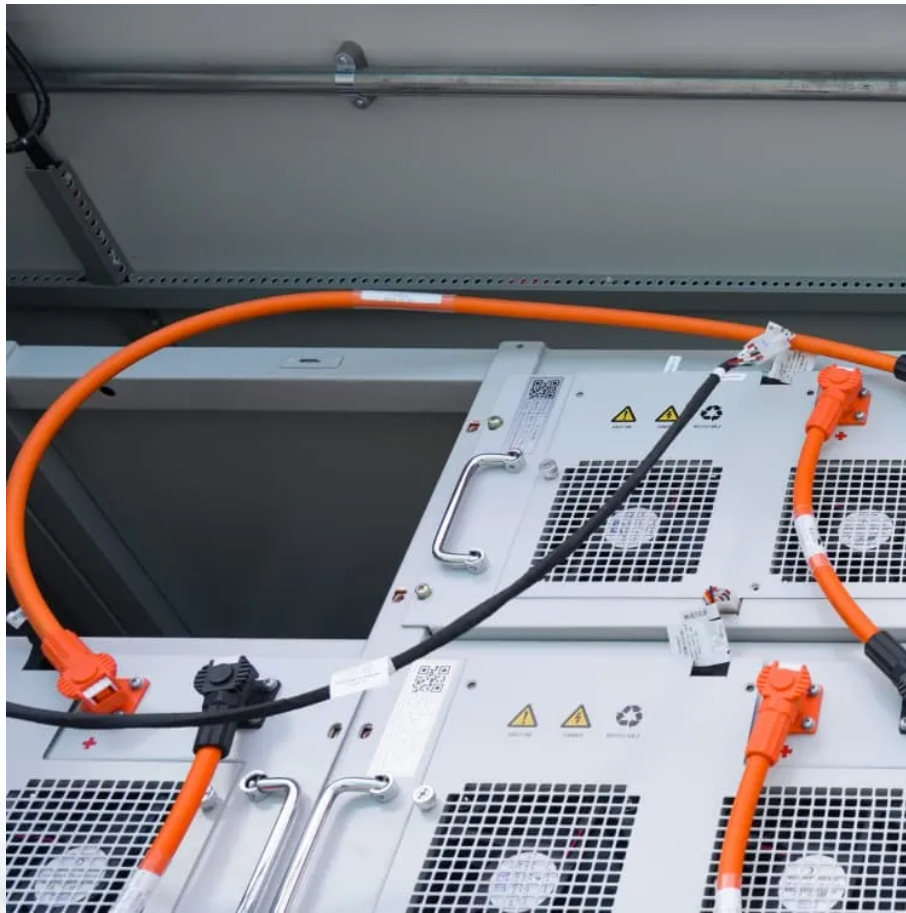


Kongres Container

The cost of inverter construction for Guinea s communication base stations



Overview

Per site capex costs include \$39k for all active equipment, \$47k to build a full 30m tower and \$27k for installation.

The cost of inverter construction for Guinea s communication base s

Contact Us

For catalog requests, pricing, or partnerships, please visit:
<https://www.drugiswiatowykongrespolakow.pl>