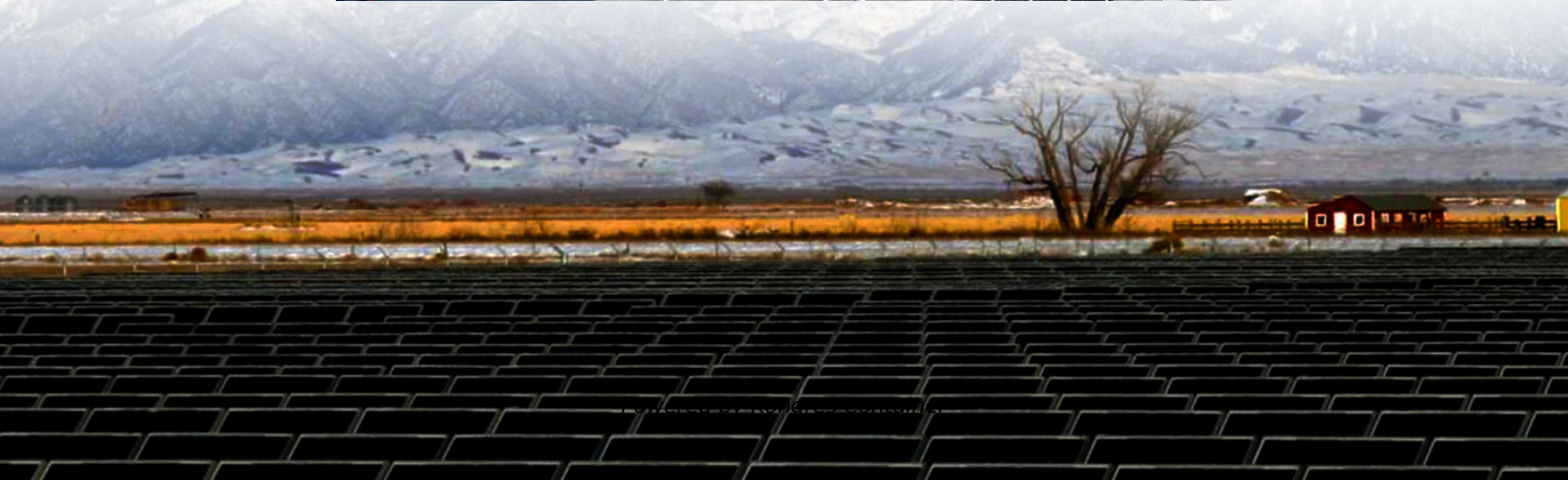
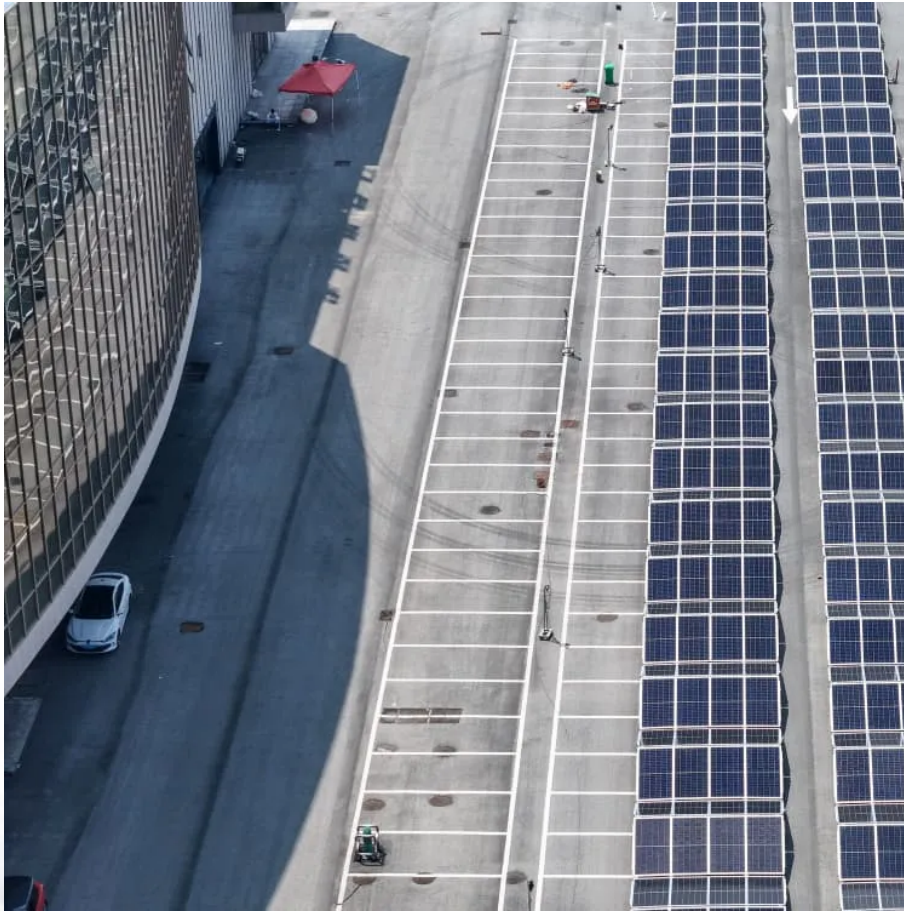


Kongres Container

Telecommunication base station wind power equipment installation budget



Overview

How can wind energy help a telecom tower?

Contact Freen to discuss wind energy options for your infrastructure. Hybrid renewable energy systems are ideal for telecom towers in areas where grid connection is expensive or unavailable. Combining wind turbines, solar panels, and battery storage creates an efficient solution. These systems ensure energy availability around the clock.

What are small wind turbines for remote telecom towers?

Small wind turbines provide a secure and cost-effective alternative. They ensure telecom towers run smoothly, even in remote and challenging environments. This article explores how small wind turbines for remote telecom towers are revolutionizing energy solutions, highlighting their benefits and practical applications.

How much power does a base station use?

ting the generator set and power system configuration for the cell tower. At the same time, there are certain loads that every base transceiver station (BTS) will use. These loads are pictured in Figure 2, which shows a typical one-line electrical layout for a base station employing a 12 kW (15 kVA).

How can a small wind turbine help the telecom industry?

As the push for net-zero carbon emissions accelerates, the telecom sector must adopt innovative, renewable energy solutions for telecom sites. Small wind turbines provide a secure and cost-effective alternative. They ensure telecom towers run smoothly, even in remote and challenging environments.

Can wind turbines be used for telecom towers?

Natural disasters like bushfires and floods exacerbated the problem. To address this, Diffuse Energy, a Newcastle-based startup, developed small-scale wind turbines for telecom towers. Supported by \$341,990 in funding

from the Australian Renewable Energy Agency (ARENA), they installed turbines at 10 remote sites.

What is a typical electrical layout for a telecom base station?

Figure 2 - Typical electrical layout for loads on a telecom base station. As you can see, the load consists mainly of microwave radio equipment and other housekeeping loads such as lighting and air conditioning units. The actual BTS load used on the cell to

Telecommunication base station wind power equipment installation

Contact Us

For catalog requests, pricing, or partnerships, please visit:
<https://www.drugiswiatowykongrespolakow.pl>