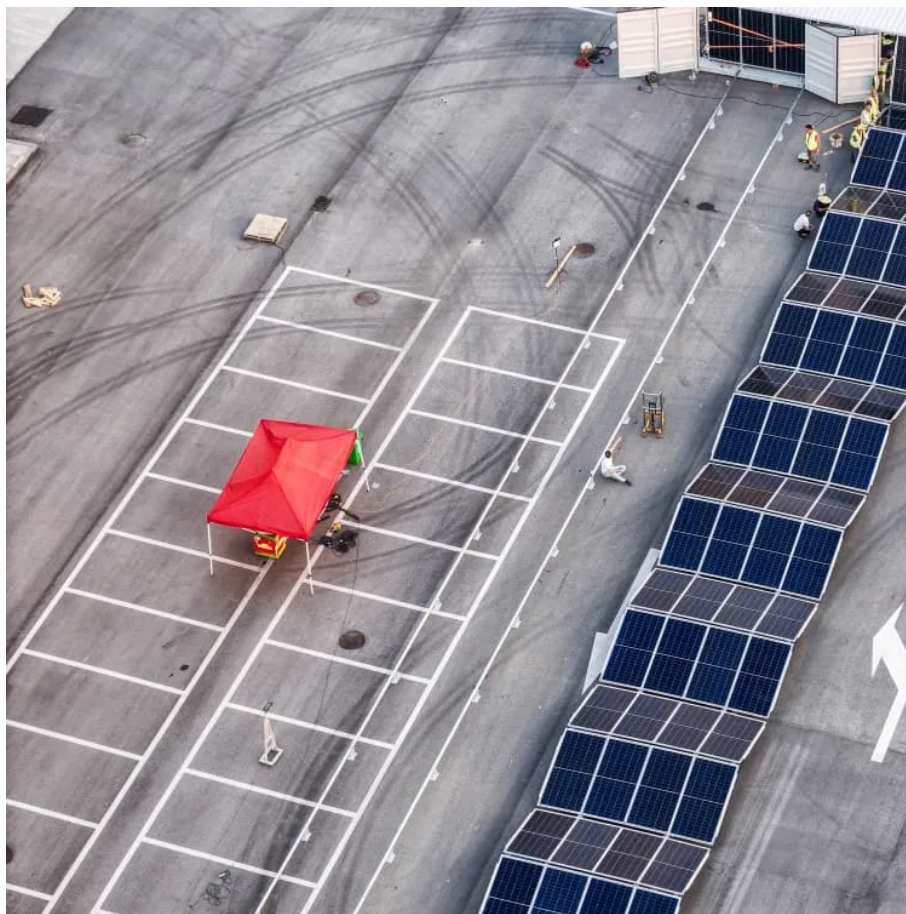


## Kongres Container

# Support 1KW solar cell



## Overview

---

How many Watts Does a 5kw Solar System use?

Take, for example, a 5kW solar system. The summary of all the solar panel wattages in a 5kW system should be 5000 watts (since  $5\text{kW} = 5000\text{W}$ ). Usually, we use the most common 100W, 200W, 300W, and 400W PV panels for this kind of system.

How many solar panels do I need for a 5kW system?

If you are using only 400-watt solar panels, you will need 13 400-watt solar panels for a 5kW solar system ( $13 \times 400$  watts is actually 5200 watts, so this is a 5.2kW system). Quite simple, right?

You can also mix solar panels with different wattages.

How many solar panels are in a 1kW Solar System?

**Solar Panels Number of Panels:** A typical 1kW solar panel system consists of approximately 3 to 4 individual panels, depending on the wattage of each panel. Most modern panels range between 250 to 350 watts. **Type of Panels:** Monocrystalline and polycrystalline are the most common types, with monocrystalline panels generally more efficient.

How many solar panels do you need for a 20kW Solar System?

For a 20kW solar system, you would need either 200 100-watt solar panels, 100 200-watt solar panels, 68 300-watt solar panels, or 50 400-watt solar panels. This is just how easy it is. We hope that this illustrates well how many solar panels you need for these differently-sized solar systems.

How much energy does a 1kW Solar System produce?

**Expected Energy Production:** A 1kW solar panel system typically produces around 4-5 kWh of electricity per day, depending on sun exposure and geographical location. **Annual Savings:** This translates to a yearly energy

production of approximately 1,460-1,825 kWh.

How much space does a 1kW solar panel system need?

**Required Roof Space:** A typical 1kW solar panel system requires approximately 6.4 square meters of roof space. **Panel Layout:** Ensure the roof can accommodate the layout of 3 to 4 panels, each measuring around 1.6 square meters. **Additional Space:** Consider extra space for mounting hardware and maintenance access.

## Support 1KW solar cell

---

## Contact Us

---

For catalog requests, pricing, or partnerships, please visit:  
<https://www.drugiswiatowykongrespolakow.pl>