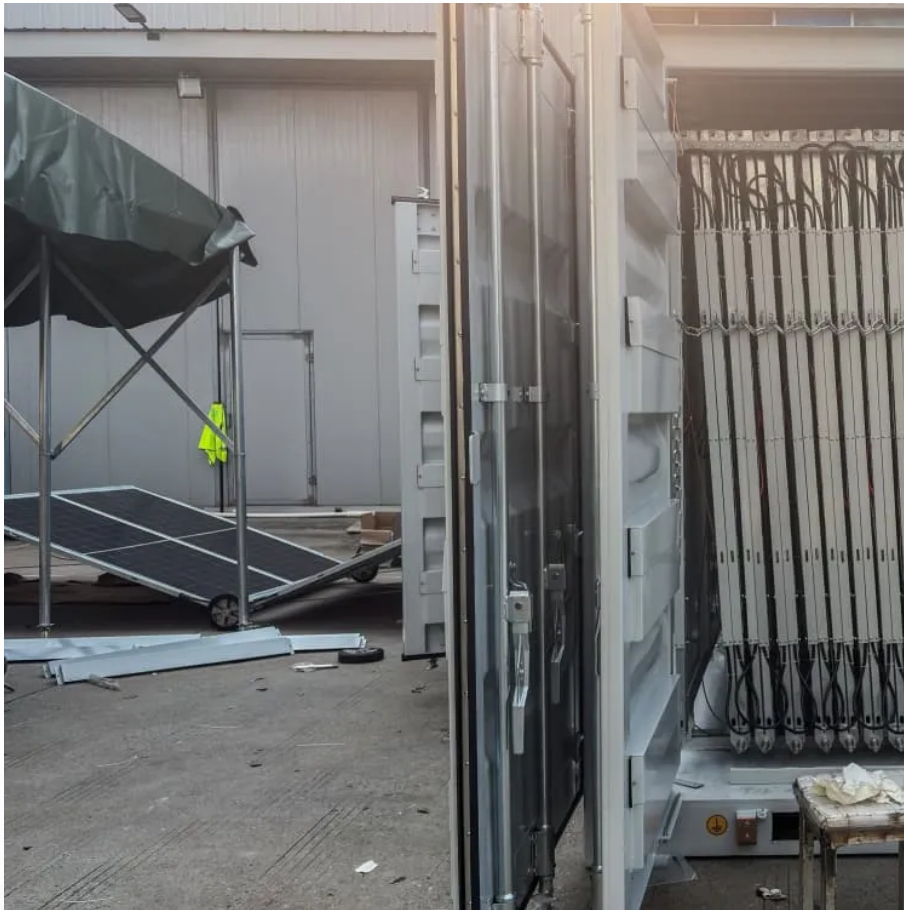


Kongres Container

Substation access to power generation



Overview

The substation may include the following equipment: 1. Power transformer or distribution transformer (depending on substation type) 2. Circuit breakers 3. Disconnecting switches 4. Isolators 5. Busbars 6.

Substation access to power generation

Contact Us

For catalog requests, pricing, or partnerships, please visit:
<https://www.drugiswiatowykongrespolakow.pl>