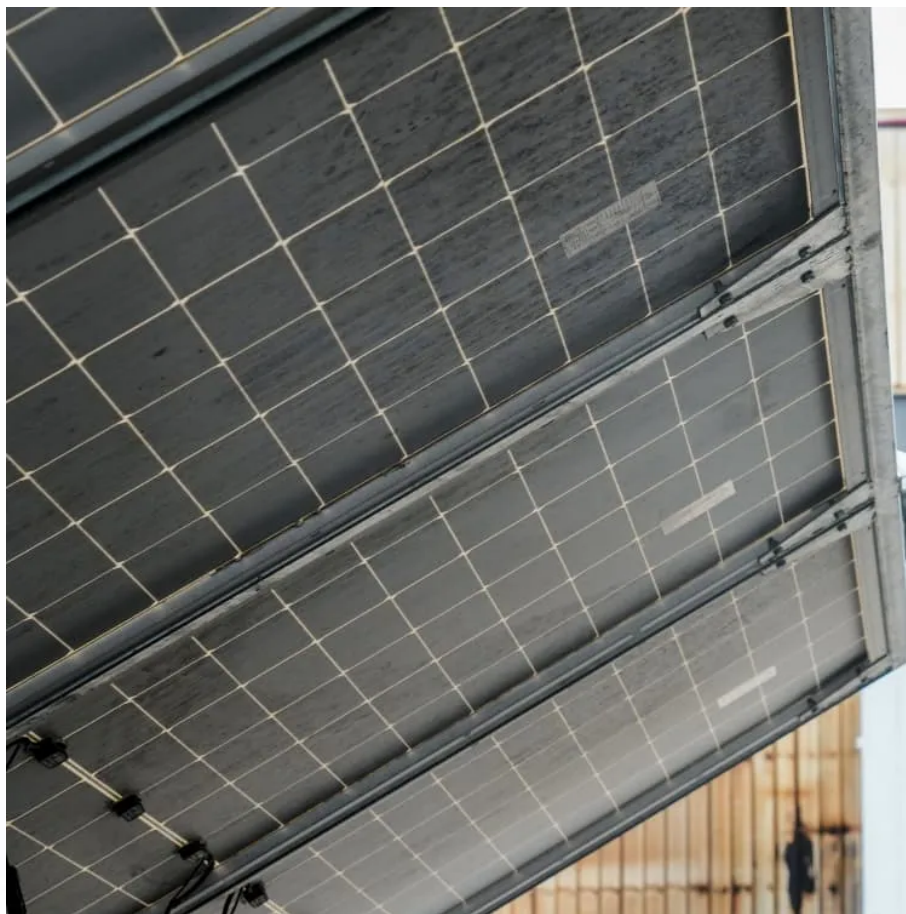


Kongres Container

String energy storage container



Overview

Containerized energy storage has become the mainstream solution for utility-scale projects. Within this category, the string-type containerized ESS is gaining popularity because it offers higher flexibility, better safety, and easier maintenance compared to centralized.

Containerized energy storage has become the mainstream solution for utility-scale projects. Within this category, the string-type containerized ESS is gaining popularity because it offers higher flexibility, better safety, and easier maintenance compared to centralized.

With 4-layer protection from cell level to electrical level, structural level and emergency protection level, HUAWEI redefines energy storage system safety. Huawei Smart String Energy Storage System has passed the German VDE AR-E 2510-50 safety certification, which is a highly recognized safety.

Battery Energy Storage Systems (BESS) have rapidly evolved into essential components within renewable energy infrastructures, and among these, string-type designs have emerged prominently due to their unique benefits. Unlike traditional centralized storage approaches, string-type BESS employs.

The smart string energy storage system is a revolution in energy storage, merging digital, photovoltaic, and energy storage technologies. The system incorporates energy storage equipment, an intelligent controller, and a management platform for optimal control. It optimizes energy density, reduces.

CPS is excited to introduce a turnkey battery storage inverter skid for utility energy storage systems. The battery storage inverter skid is available in two standardized configurations: 2.0MW and 2.4MW, achieved by incorporating 10 and 12 units of CPS's 200kW string PCS inverters (CPS).

Containerized energy storage has become the mainstream solution for utility-scale projects. Within this category, the string-type containerized ESS is gaining popularity because it offers higher flexibility, better safety, and easier maintenance compared to centralized systems. What is a.

The INPBESS-1500 is a high-energy-density solution integrated with a string inverter architecture. By connecting 12×125kW modules in parallel, a system power of 1.5MW was achieved. Supporting multi-branch DC side design, providing more options for battery management. Its DC side employs.

String energy storage container

Contact Us

For catalog requests, pricing, or partnerships, please visit:
<https://www.drugiswiatowykongrespolakow.pl>