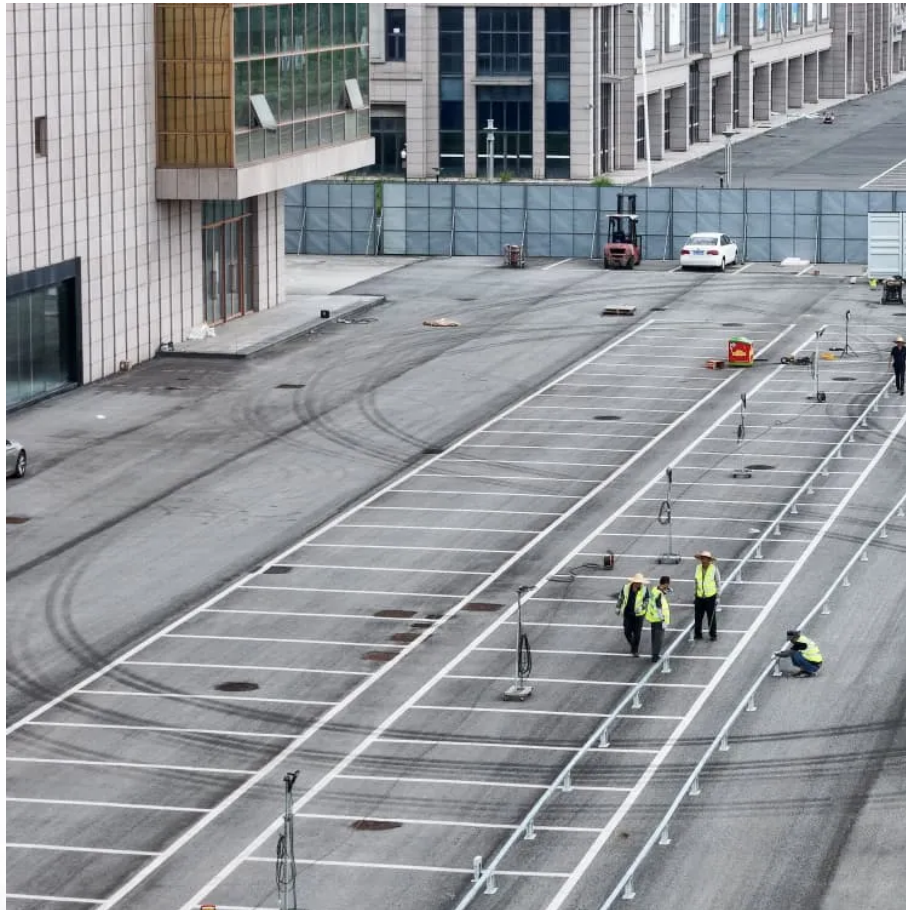


Kongres Container

Special features of lithium battery packs



Overview

Lithium-ion battery packs feature high energy density, lightweight design, and long cycle life. They include multiple cells combined for desired voltage and capacity, a Battery Management System (BMS) for safety and performance, thermal management, and protective enclosures.

Lithium-ion battery packs feature high energy density, lightweight design, and long cycle life. They include multiple cells combined for desired voltage and capacity, a Battery Management System (BMS) for safety and performance, thermal management, and protective enclosures.

Lithium-ion battery packs have become integral to various industries due to their unique properties. This article delves into the composition, working mechanism, types, benefits, and frequently asked questions surrounding these essential power sources. Part 1. Lithium-ion battery pack Cathode: The.

Lithium-ion battery packs are fundamental components in various applications, especially in electric vehicles, portable electronics, and renewable energy storage systems. A notable fact is that lithium-ion batteries have revolutionized energy storage by offering significantly higher energy.

Lithium-ion battery packs function by allowing lithium ions to move between the anode and cathode during charging and discharging cycles. When charging, lithium ions migrate from the positive electrode (cathode) through an electrolyte to the negative electrode (anode). During discharge, the process.

Lithium ion battery pack has been more and more popular in the market. It offers better performance and a longer life design than the usual lead acid batteries. It is more compact and also has a higher power density. Lithium ion battery pack also with smart BMS system built inside for all-around.

Lithium-ion (Li-ion) battery packs are essential components powering a wide range of modern technologies, from smartphones and laptops to electric vehicles and renewable energy systems. In this blog post, we'll explore what lithium-ion battery packs are, how they work, their advantages and.

Lithium-ion battery packs are complex assemblies that include cells, a battery management system (BMS), passive components, an enclosure, and a thermal management system. They power a vast array of applications, from consumer electronics to electric vehicles, and require careful engineering to.

Special features of lithium battery packs

Contact Us

For catalog requests, pricing, or partnerships, please visit:
<https://www.drugiswiatowykongrespolakow.pl>