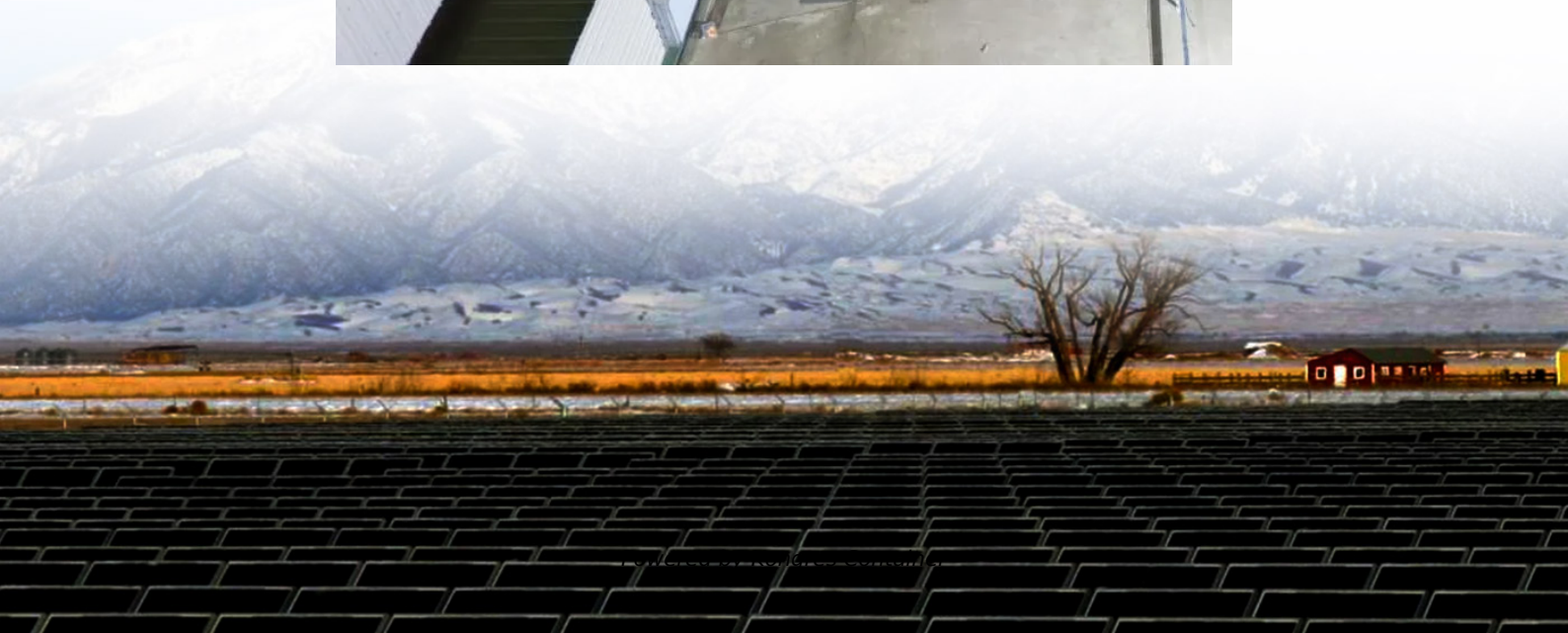
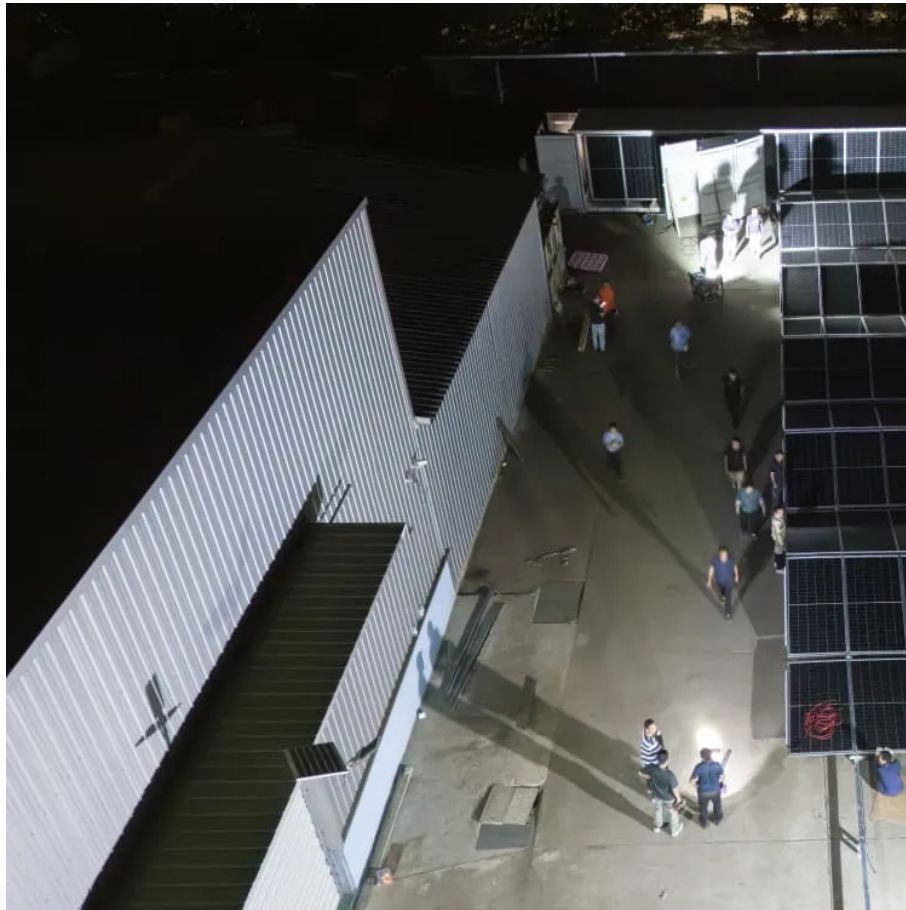


Kongres Container

Solar panel standard power 10 watts



Overview

A 12V 10-Watt Solar Panel has a maximum power output (P_{max}) of 10W. The open-circuit voltage (V_{oc}) ranges from 14.4V to 21.3V, depending on the manufacturer. The short-circuit current (I_{sc}) ranges from 0.89A to 0.66A. The optimum operating voltage (V_{mp}) ranges from 12V to 17.3V.

A 12V 10-Watt Solar Panel has a maximum power output (P_{max}) of 10W. The open-circuit voltage (V_{oc}) ranges from 14.4V to 21.3V, depending on the manufacturer. The short-circuit current (I_{sc}) ranges from 0.89A to 0.66A. The optimum operating voltage (V_{mp}) ranges from 12V to 17.3V.

There is no standardized chart that will tell you, for example, “A typical 300-watt solar panel is this long and this wide.” If you want to calculate how many solar panels you can put on your roof, you will obviously need to know the size of a solar panel. Example: 5kW solar system is comprised of.

Read on for our expert reviews of the best 10 watt solar panels available. Check the latest prices to ensure you get a great deal! A model that is compatible with multiple battery types. It can be used for various applications, thereby making it versatile. It is portable and lightweight, which.

A 10 watt solar panel typically generates approximately 30 to 40 watt-hours of energy per day under optimal conditions, factoring in several variables, including sunlight exposure, angle, and geographic location. The amount of electricity charged significantly depends on these elements, with direct.

A 10-watt solar panel is a very lightweight and portable PV device that can produce up to 10 watts of DC power under standard test conditions (STC). Since they weigh about 1-1.4 kgs, you can carry them without effort and use them as a backup to charge smartphones and flashlights while hiking or.

A 10-watt solar panel is a small solar device that generates electricity from sunlight. It can produce up to 10 watts of power under perfect sunlight conditions. These panels are often compact, making them easy to use in various applications. Power Output: Up to 10 watts in direct sunlight. Typical.

Solartech photovoltaic M-Series Modules are constructed with high efficient polycrystalline solar cells and produce higher output per module than others in it class. This industrial grade module is an industry standard among various industry professionals. 1. Solartech Modules Series 2. Cell type:.

Solar panel standard power 10 watts

Contact Us

For catalog requests, pricing, or partnerships, please visit:
<https://www.drugiswiatowykongrespolakow.pl>