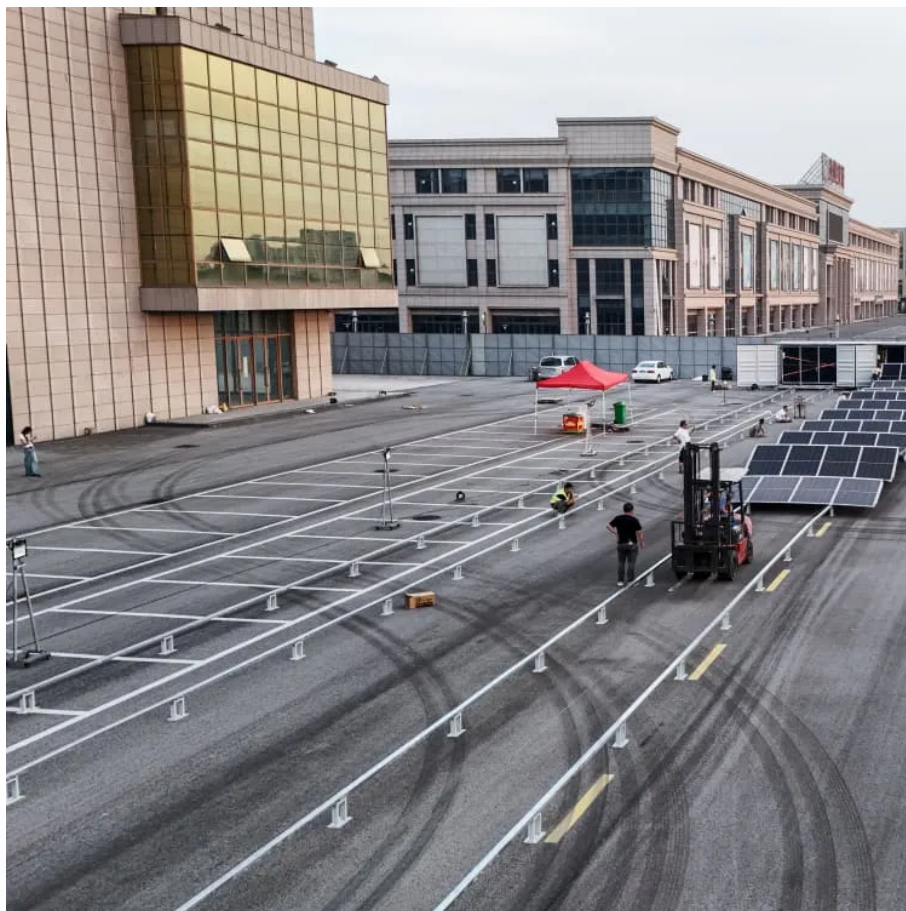


## Kongres Container

# Solar BIPV roof tiles



## Overview

---

Solar roof tiles, also known as solar shingles or photovoltaic tiles, are building-integrated photovoltaic (BIPV) systems that serve the dual purpose of protecting your home from the elements while generating electricity. What are solar roof tiles?

Solar panels are designed more and more with their architectural integration in mind. Solar roof tiles are a perfect solution, since they constitute a range of active technological glasses that have the property of generating electrical energy and can be used both in newly built buildings and in renovations.

Where can metsolar BIPV solutions be used?

Metsolar BIPV solutions for roofing and solar roof tile projects are already successfully implemented and generating energy across Europe in Scandinavia region, Middle East and North America. Our flexible manufacturing allows us to deliver visually appealing and cost & energy efficient roofing solutions.

Which glass is used for BIPV solar panels?

To achieve most ergonomic look, most often satin solar glass for such BIPV modules are used. We manufacture extensive variety of custom BIPV solar panels in size, shape, color, transparency and efficiency. All our PV products can be produced with full or cut solar cells as per demand.

Can solar Innova be installed on a sloping roof?

Solar Innova photovoltaic tiles can be installed on sloping roofs, replacing conventional flat or curved tiles without the need to change battens. They are installed with a vertical overlap and using stainless steel self-tapping screws.

What are mitrex solar roof tiles?

Mitrex solar roof tiles are a BIPV technology designed to appear as typical asphalt shingles on residential roofs. They serve the dual purpose of

protecting the roof structure while using solar energy to generate electricity. Moreover, they are easy to install and, like ordinary shingles, are built to withstand the weather elements.

Can photovoltaic roof tiles save energy?

The architectural integration of photovoltaic roof tiles in construction makes it possible to create glazed surfaces that, in addition to being an aesthetic and functional novelty, generate electricity, improving the thermal and acoustic insulation of buildings, also allowing control solar and electrical autonomy with the consequent energy savings.

## Solar BIPV roof tiles

---

## Contact Us

---

For catalog requests, pricing, or partnerships, please visit:  
<https://www.drugiswiatowykongrespolakow.pl>