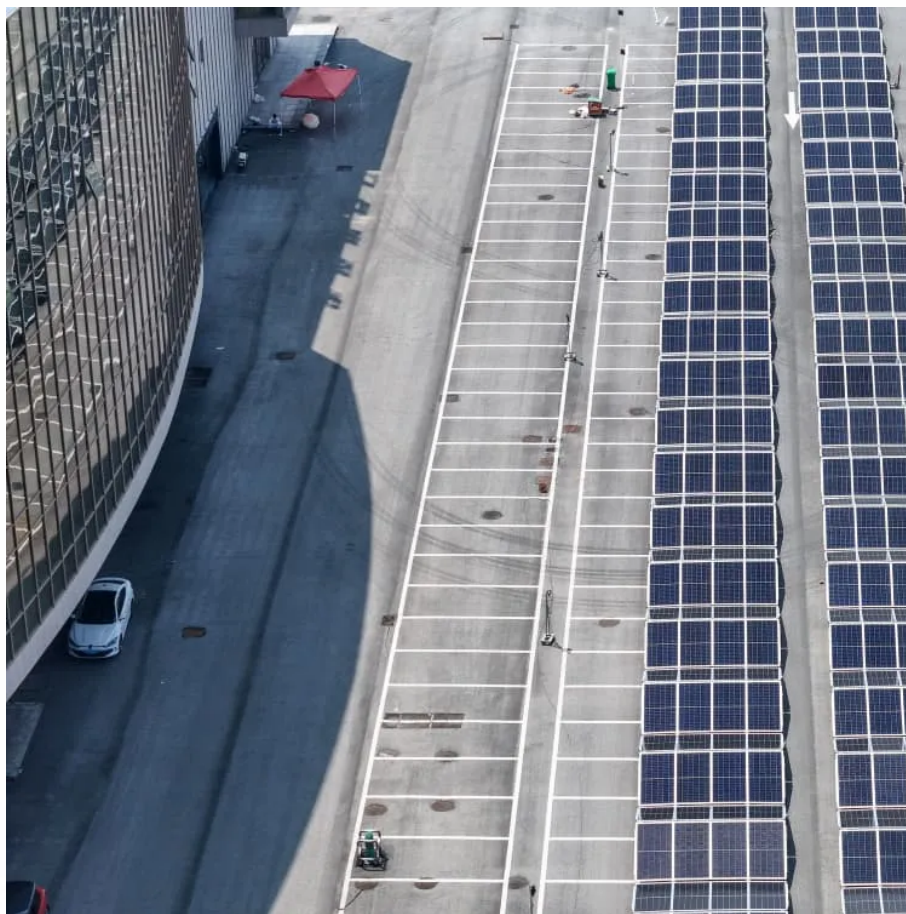


Kongres Container

Simple 6v to 220v inverter



Overview

How much power does a 220 volt inverter draw?

This 3 V to 220 V inverter circuit may draw around 70 ma from the 3 V battery (B1). The inverter circuit seen above is built around a straightforward astable multivibrator, which pushes and pulls its output via the secondary of a center-tapped, 12-volt step down power transformer. The circuit is powered by 6 volts of DC from four AAA batteries.

How does a 220 volt inverter work?

This is actually an oscillating circuit, which turns the DC power into AC power, then turns it into 220V through the transformer boost, and then connects the electrical device to the output terminal, but the inverter made by these components. The output waveform must have no grid standard, but driving the bulb is sufficient .

Can a 220V inverter power a car battery?

Remember that, although the simple 12V to 220V inverter circuit is supposed and intended for powering with a car battery, i.e. from 12 V, the transformer is actually given that has a 9 V primary. However at 100 % power you should support a voltage decrease of around 3 V between collector and emitter of the power transistors.

What type of transformer do you need for an inverter circuit?

The transformer can be any ordinary iron core 9-0-9 V to 220 V or 120 V step down transformer, connected in the reverse order. The above explained were a few straightforward inverter circuit designs, however if you think these are pretty ordinary for you, you can always explore more advanced designs which are included in this website.

How many volts can a mini inverter produce?

All the designs employ a single PNP transistor and transformer, connected in

the feedback mode for generating the oscillations. The mini inverter circuit demonstrated in the following figure can produce a highest AC output of 220 volts if it is powered through any battery between 1.5 V and 6 V battery.

What is a simple inverter?

An inverter which uses minimum number of components for converting a 12 V DC to 230 V AC is called a simple inverter. A 12 V lead acid battery is the most standard form of battery which is used for operating such inverters. Let's begin with the most simplest in the list which utilizes a couple of 2N3055 transistors and some resistors.

Simple 6v to 220v inverter

Contact Us

For catalog requests, pricing, or partnerships, please visit:
<https://www.drugiswiatowykongrespolakow.pl>