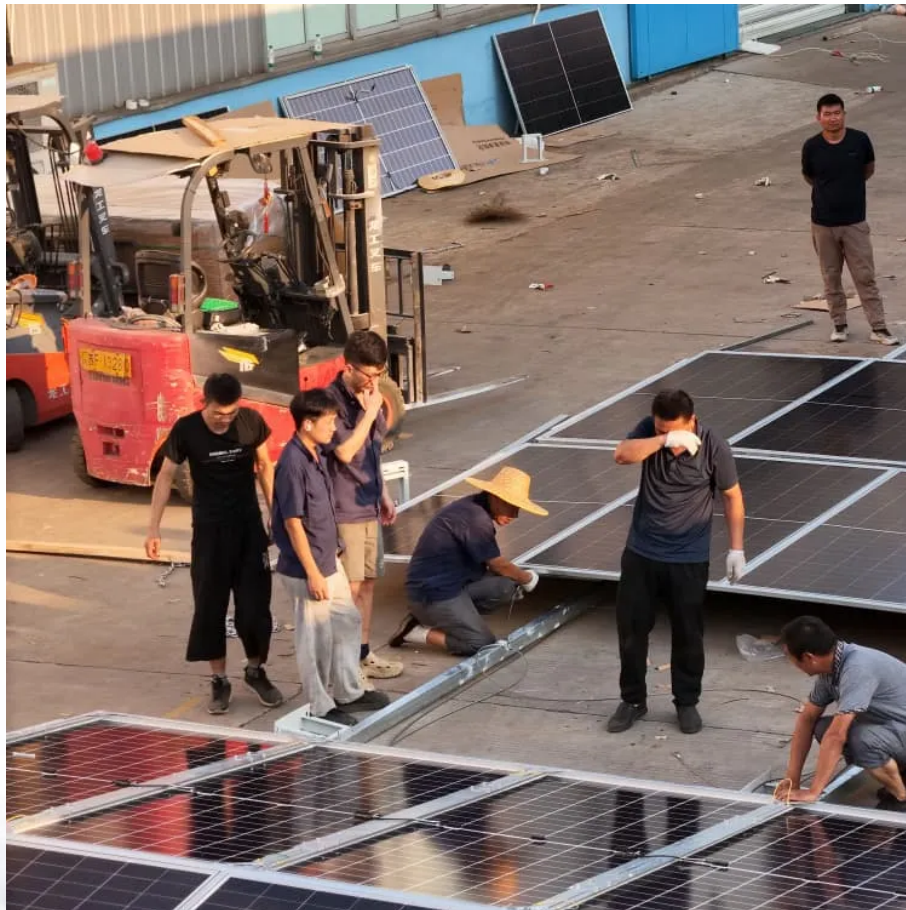


Kongres Container

Selection of charging current for lithium battery station cabinet



Overview

For standard Li-ion or Li-polymer batteries, chargers often target 0.5C charge current. In other words, if the battery is rated at 500 mA-h, the target current is 250 mA. It is not unusual to charge at 1C (500mA), but this compromises the battery's capacity over time.

Selection of charging current for lithium battery station cabinet

Contact Us

For catalog requests, pricing, or partnerships, please visit:
<https://www.drugiswiatowykongrespolakow.pl>