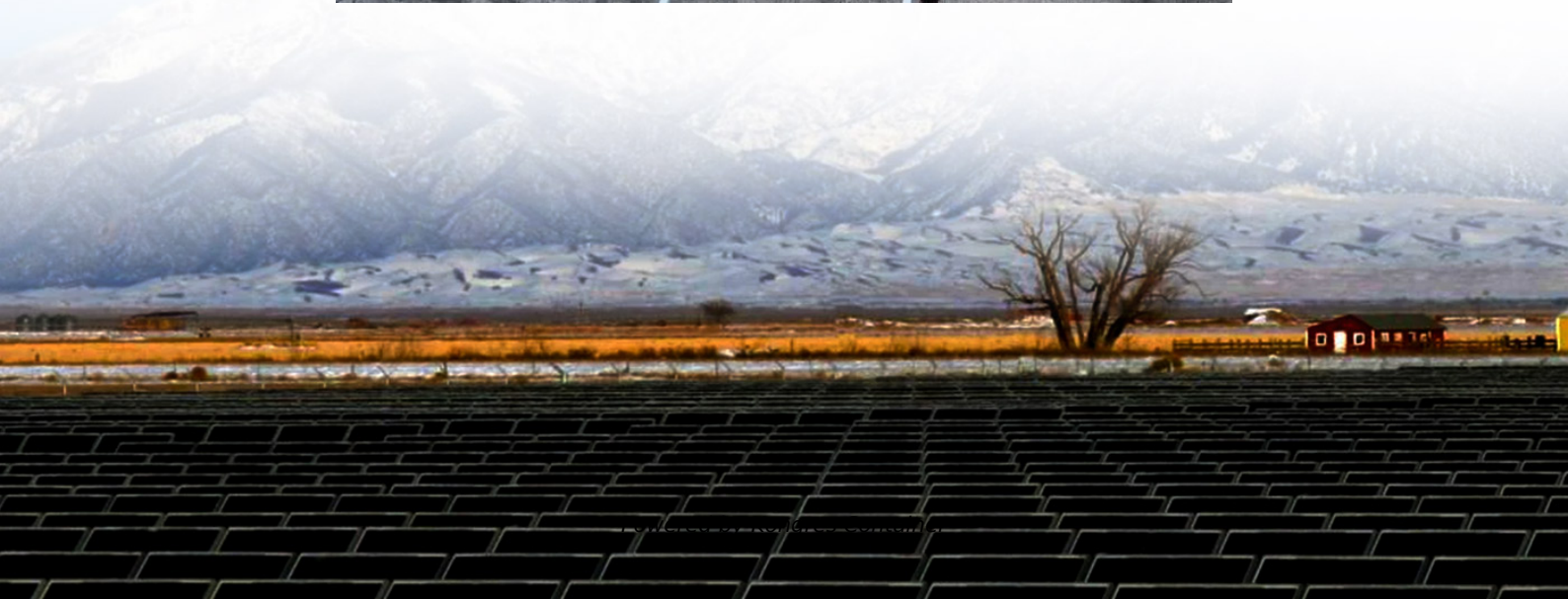
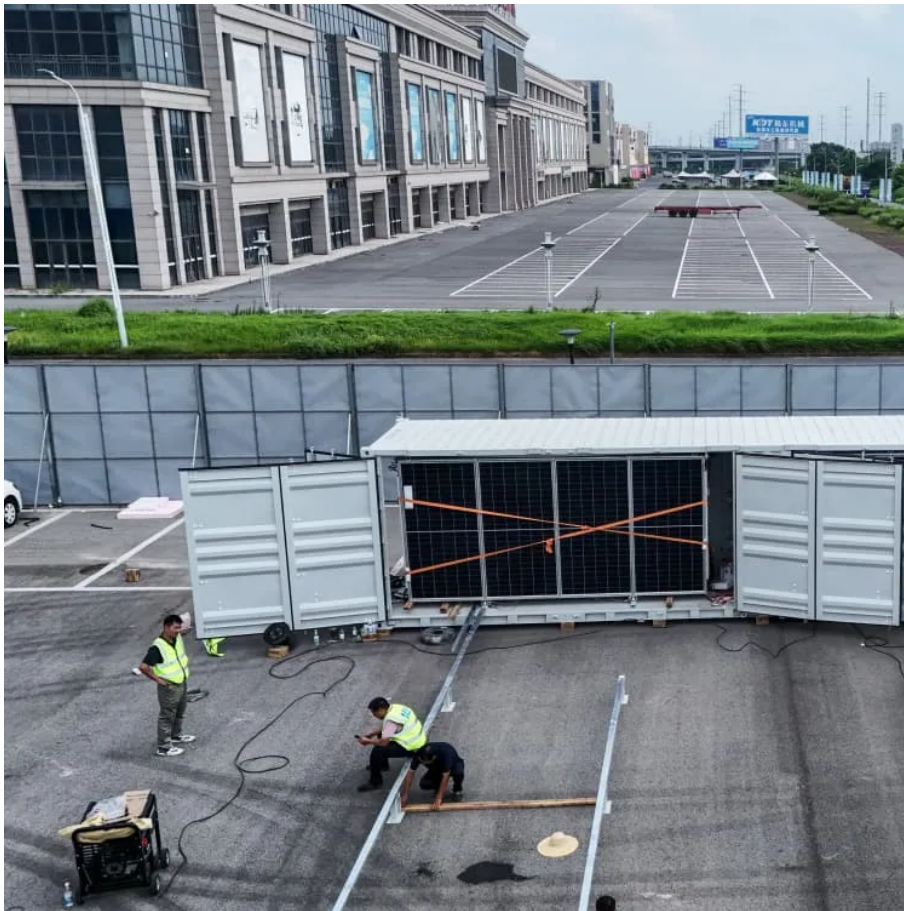


Kongres Container

Rooftop solar panels in parallel



Overview

In this guide, we'll walk you through how to connect solar panels in parallel, including wiring diagrams, safety tips, and key technical insights. Should I wire my solar panel system in a series or parallel?

The decision between wiring your rooftop solar panel system in a series or parallel largely depends on your specific energy needs, the design of your solar panel system, and the characteristics of your home. Often, your solar installer will decide for you which wiring system is the best fit.

Why do solar panels need to be connected in parallel?

Connecting solar panels in parallel is just the opposite of series connection and is used to increase the total output current of the array, and hence the total output power while keeping the same voltage. 'The same voltage' is the system voltage which for off-grid solar panels systems is usually as low as either 6V or 12V.

Do solar panels charge faster in series or parallel?

Solar panels do not necessarily charge faster in series or parallel; it depends on the system configuration and conditions. Series wiring increases voltage, which can be more efficient for long distances, while parallel wiring increases current, which can be better for shaded conditions.

Can a 6V solar panel be wired parallel to a 12V panel?

In this case, it is possible to wire the two 6V panels in series and then wire the resultant array in parallel to the 12V panel. However, the latter type of connection is at the expense of efficiency. It is therefore essential, before making a parallel connection, to carefully check the voltage of the solar panels.

Can I Mix Series and parallel solar panels?

Yes, you can mix series and parallel solar panels, a method known as a "series-

parallel" configuration. This setup combines the benefits of both wiring methods, increasing both voltage and current. Ensure all panels have similar electrical characteristics to avoid mismatches and optimize performance.

What is the difference between parallel and off-grid solar panels?

'The same voltage' is the system voltage which for off-grid solar panels systems is usually as low as either 6V or 12V. For this reason, parallel connection is more typical for off-grid systems. In the parallel connection, all the positive terminals of the panels are joined together, and all the negative terminals are also joined together.

Rooftop solar panels in parallel

Contact Us

For catalog requests, pricing, or partnerships, please visit:
<https://www.drugiswiatowykongrespolakow.pl>