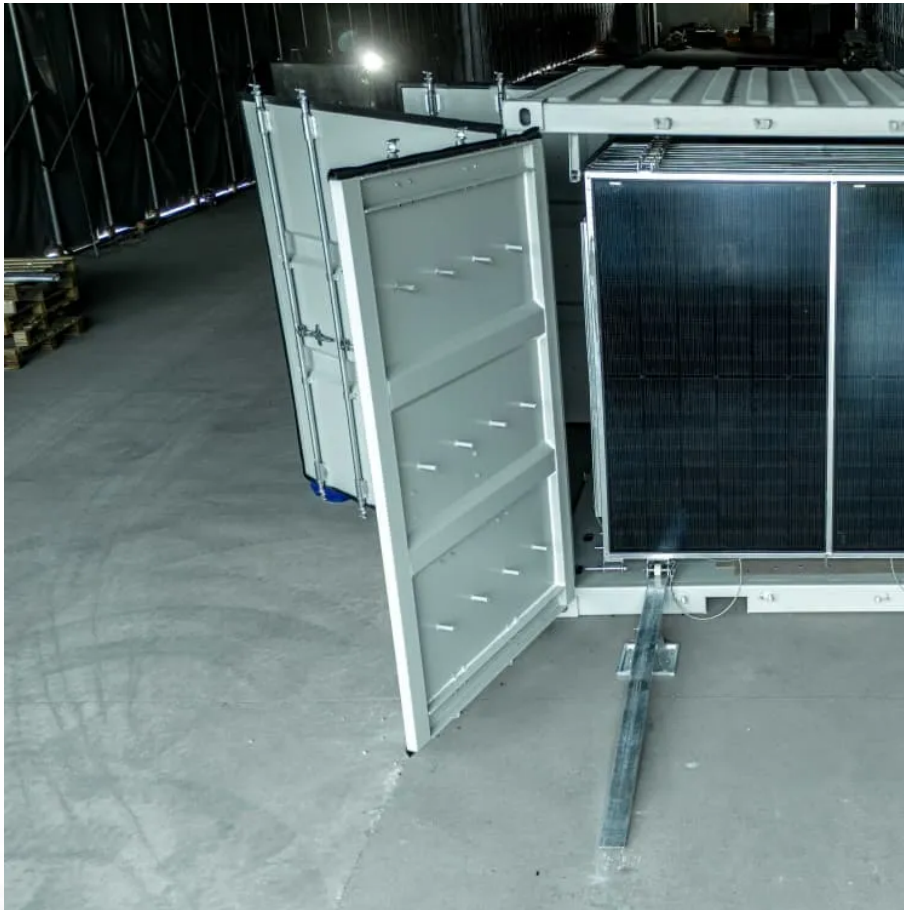


## Kongres Container

**Outdoor power supply has the highest power consumption**



## Overview

---

We tested 22 portable power stations for over a year to find the best models for home backup, camping, road trips, and emergency power.

We tested 22 portable power stations for over a year to find the best models for home backup, camping, road trips, and emergency power.

Portable power stations can deliver power when you need it most, whether during power outages or just for an off-grid adventure. These handy electricity suppliers vary in size, output, and energy source, not to mention durability. That's why we've tested 22 models since 2022; some we've kept on.

Up to now there was only one outdoor power supply with a maximum output of 40 watts, at least that is what Philips Hue says. How many lamps can be connected to it, each user should be able to reach easily by himself: A Philips Hue Lily consumes up to 8 watts, so five of them can theoretically be.

Standby power, also known as vampire power or phantom load, is the electricity used by electronic devices when they're plugged in but not actively in use. It's like that little sneaky drain on your energy that you might not even notice. For an outdoor energy power supply, standby power consumption.

The outdoor power supply is an outdoor multifunctional power supply with a built-in lithium-ion battery and its own electric energy storage, also known as a portable AC or DC power supply. The outdoor power supply is equivalent to a small portable charging station. It has the characteristics of.

Outdoor power supply, actually called outdoor mobile power, is equivalent to a portable charging station. The main feature is the configuration of various types of output ports: 1. USB and TypeC can charge general digital devices. 2. Car charger interface, you can charge the car battery, or other.

Portable power stations or power banks with a lower wattage (around 100W to 500W) are sufficient. Larger Devices: Power tools, refrigerators, and other high-wattage appliances require more significant power supplies (ranging from 500W to several thousand watts). In such cases, a larger portable. What is a

good universal power supply?

STM MLC70 is one of the most compact universal power supplies, capable of delivering an output power of up to 70 W. It comes with an adapter featuring a USB Type-C connector, allowing you to charge not only laptops but also any compatible electronics and peripherals.

How much power can a Philips Hue outdoor power supply withstand?

The bottom line is that the maximum power is a little more than 70 watts, much more than the 40 watt power supply from Philips Hue should be able to withstand. But with a measuring device I was able to make interesting findings. The outdoor power supply seems to have enough reserves.

What if I overload A 40W PSU?

Signify leaves us with the following knowledge in a statement: Power consumption levels indicated for products are based on max power, which is at 4000K white light and full brightness. When overloading the 40W PSU (>40W), it will affect performance (flickering & lifetime). When used like this warranty will not apply

## Outdoor power supply has the highest power consumption

---

### Contact Us

---

For catalog requests, pricing, or partnerships, please visit:  
<https://www.drugiswiatowykongrespolakow.pl>