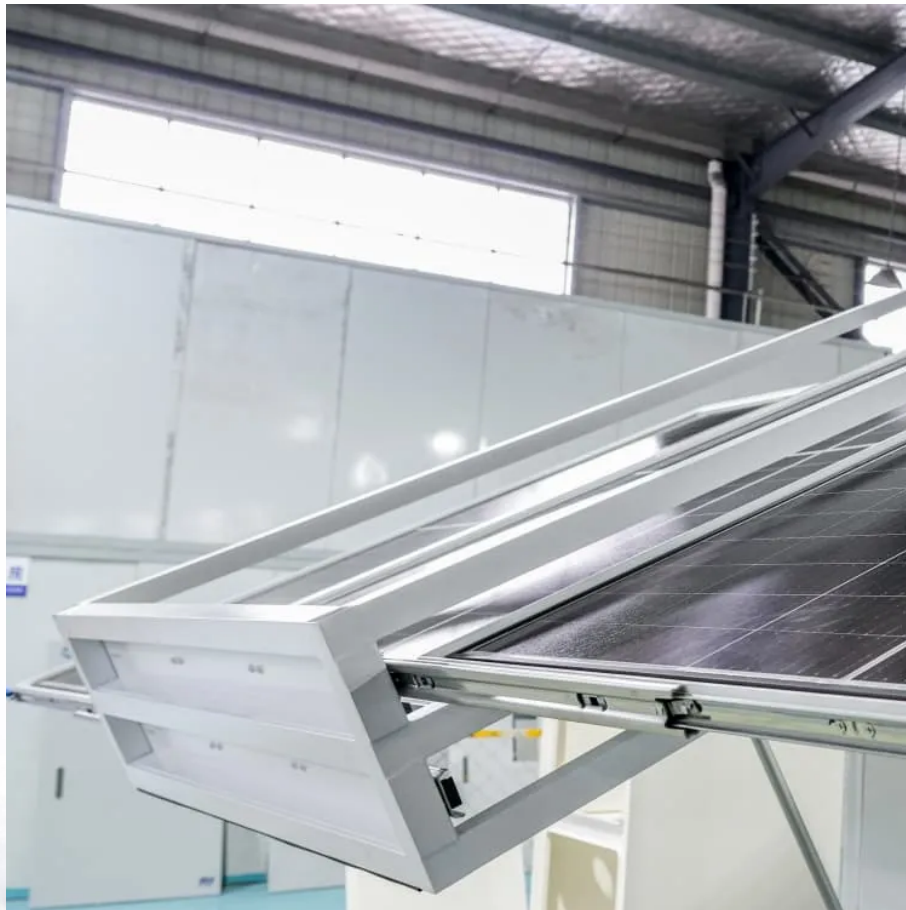


## Kongres Container

# Operational procedures for replacing wind power supply at communication base stations



## Overview

---

Can wind energy be used to power mobile phone base stations?

Worldwide thousands of base stations provide relaying mobile phone signals. Every off-grid base station has a diesel generator up to 4 kW to provide electricity for the electronic equipment involved. The presentation will give attention to the requirements on using wind energy as an energy source for powering mobile phone base stations.

Why do off-grid telecommunication base stations need generators?

As the incessant demand for wireless communication grows, off-grid telecommunication base station sites continue to be introduced around the globe. In rural or remote areas, where power from the grid is unavailable or unreliable, these cell sites require generator sets to provide power security as prime power or backup standby power.

Why should a wind farm be integrated with site maintenance logistics?

Information on the wind farm site operating status. When fully integrated into the site maintenance logistics, maintenance actions can be coordinated across the farm and service calls can be better planned and optimized, all of which will increase the turbine uptime while reducing the maintenance cost, hence maximize.

Do wind turbines have a knowledge base?

Wind turbines have a minimum knowledge base. The AWEA Operation and Maintenance Recommended Practices (O&M RPs) are not “best” practices nor the only procedures that should be followed. They represent suggestions from experts in the field.

How should wind energy companies evaluate compliance obligations under OSHA standards?

Through the federal regulatory rulemaking process. The American Wind Energy

Association (AWEA) cannot determine or prescribe how member companies should evaluate their compliance obligations under OSHA's standards. Each employer must make its own determinat.

How can a nonparametric model help a wind turbine & wind plant?

processes within a wind turbine and wind plant. The issue is the high variability in the data and getting a sense of the data compared to the plant and historical operations. One proven method is using empirical nonparametric modeling of process pa-rameters to complement tr

## Operational procedures for replacing wind power supply at commun

---

### Contact Us

---

For catalog requests, pricing, or partnerships, please visit:  
<https://www.drugiswiatowykongrespolakow.pl>