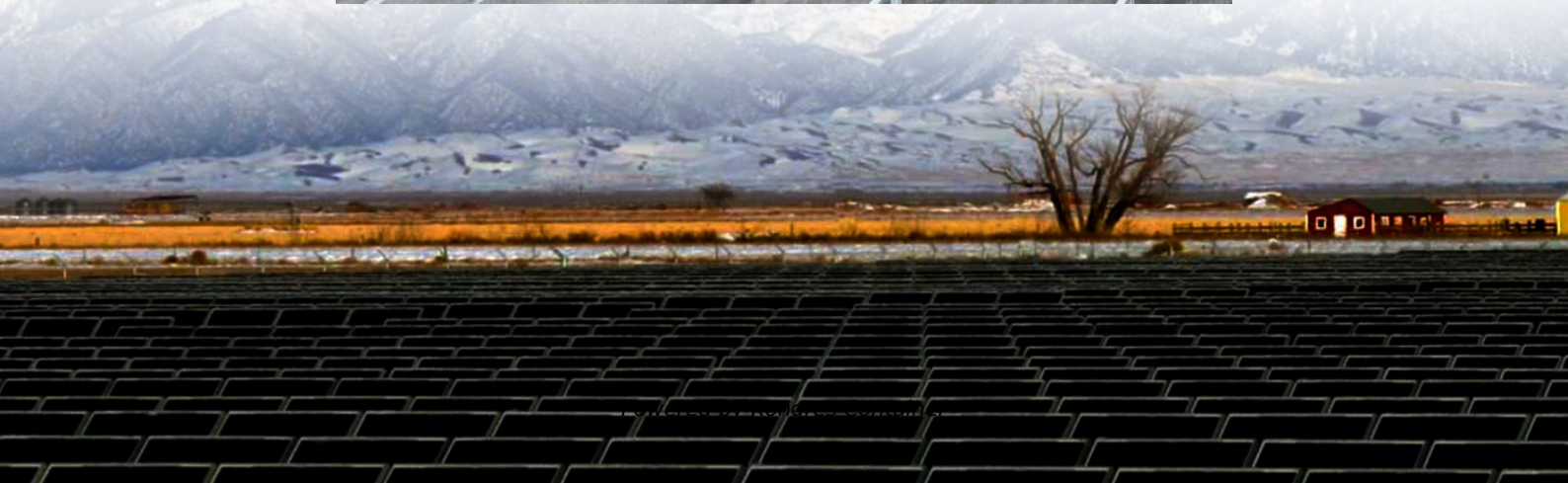
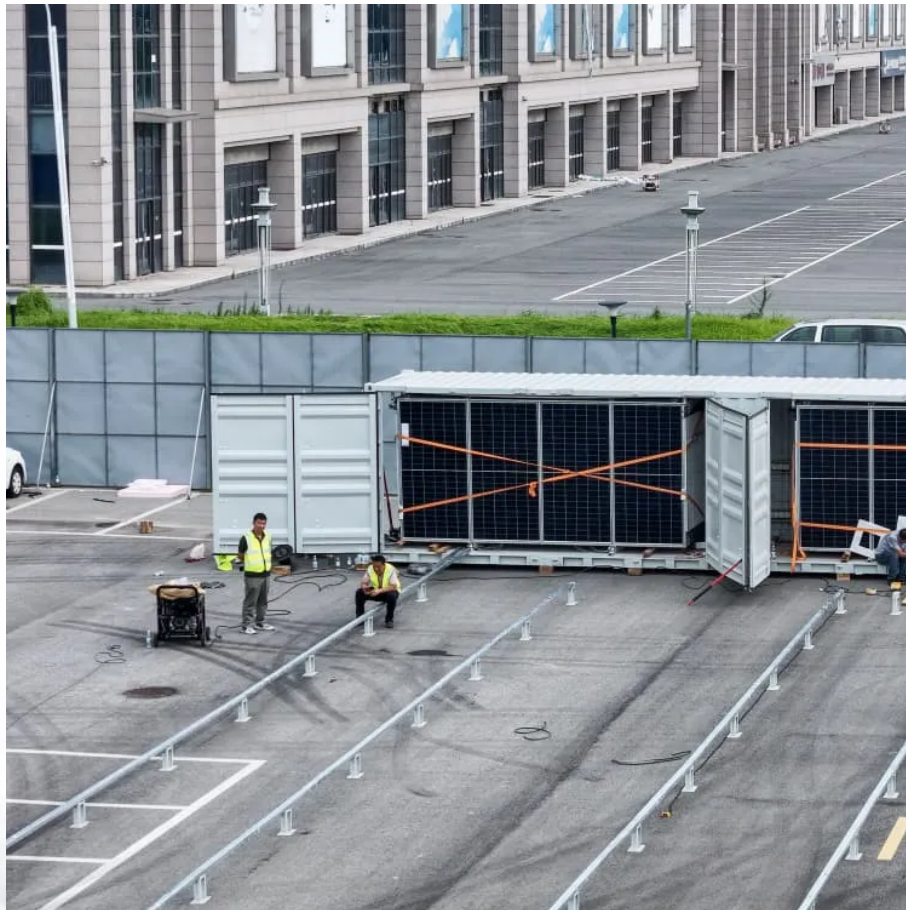


Kongres Container

Nicaragua Telecommunications Base Station Hybrid Energy Location



Overview

What is a base transceiver station?

The base transceiver station is one of the main components of cell sites that consume energy. Diesel fuel purchases for generators, which make up over 80 % of plant-level energy expenditures at off-grid and off-grid tower sites, are the primary source of these costs.

Can a stand-alone hybrid energy system work in Malaysia?

In the area of the east coast of Malaysia where some of the resorts are in remote islands can be considered as off-grid situation, a stand-alone hybrid energy system using solar, wind, diesel generator looks promising results in the long run.

Are base transceiver stations environmentally friendly?

The only electrical source currently in service in the Base Transceiver Stations (BTS) is a diesel generator. As a result, diesel generators are not economical and are not environmentally friendly. Therefore, these sites must integrate sustainable energy sources like wind and solar [4].

What is unique about this research based on hybrid energy storage?

The interesting or unique about this research compared to other research-based on hybrid energy storage is to apply hybrid energy storage in the poor grid and bad grid scenarios which are not discussed in another research before.

Nicaragua Telecommunications Base Station Hybrid Energy Location

Contact Us

For catalog requests, pricing, or partnerships, please visit:
<https://www.drugiswiatowykongrespolakow.pl>