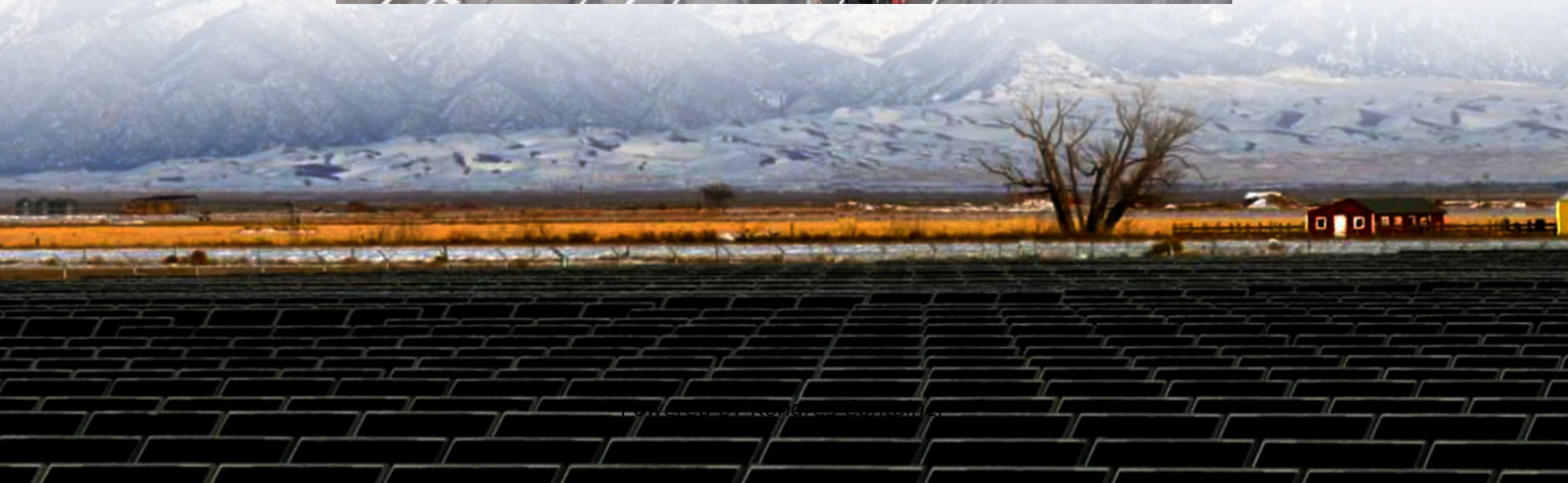
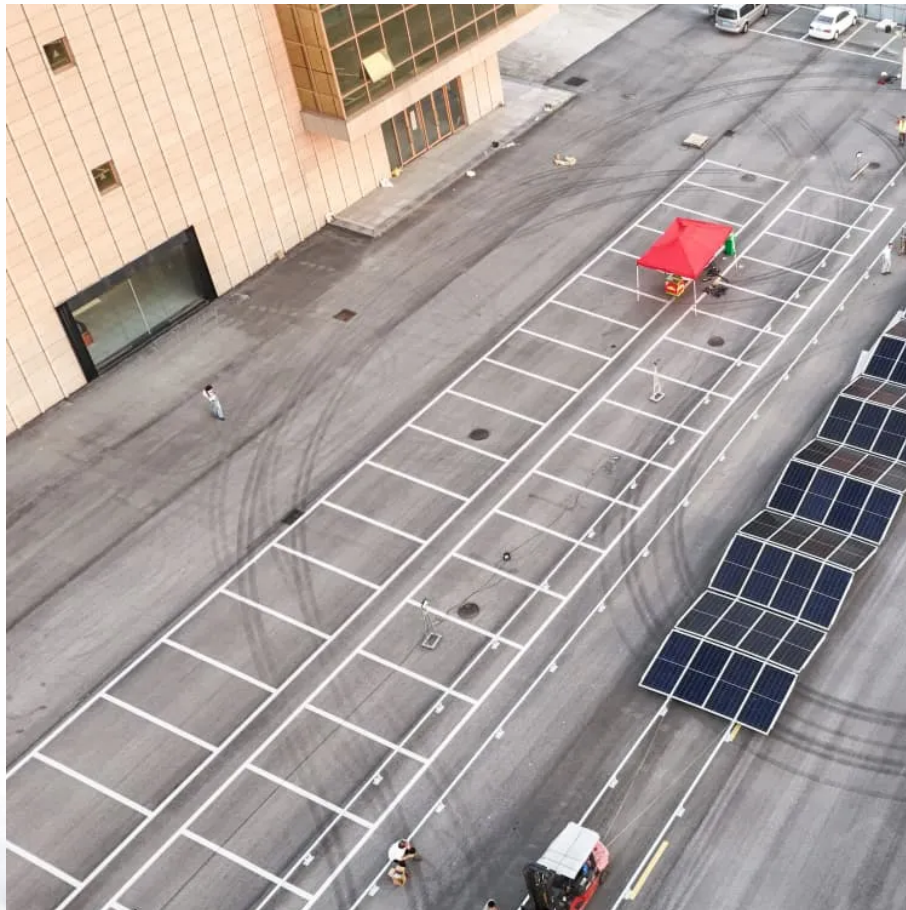


## Kongres Container

# Network communication measurement and construction of 5G base station



## Overview

---

What are the components of a 5G base station?

Baseband Unit (BBU): Handles baseband signal processing. Remote Radio Unit (RRU): Converts signals to radio frequencies for transmission. Active Antenna Unit (AAU): Integrates RRU and antenna for 5G-era efficiency. 2. Power Supply System This acts as the “blood supply” of the base station, ensuring uninterrupted power. It includes:.

What are 5G UE and BS measurements?

This page provides an overview of 5G measurements performed on User Equipment (UE) and Base Stations (BS) or Nodes B (NB). It details both 5G UE measurements and 5G BS measurements. The 5G measurements encompass both transmitter and receiver test scenarios. Introduction: The following tests are generally performed during 5G measurements:.

Are 5G NR base stations 3GPP-compliant?

Every 5G NR base station or UE manufacturer must pass all the necessary tests before releasing the products to market. Otherwise, the products do not have 3GPP-compliant recognition and are not usable for network deployment. We start with a quick overview of 3GPP base station conformance testing requirements.

What are radio layer measurements on 5G base stations?

The radio layer measurements on 5G base stations can broadly be categorized as transmitter quality and demodulation based measurements. These measurements are used to confirm that any transmitter is compliant to national regulatory requirements to prevent interference with other legitimate users of the spectrum.

Why do base stations need a 5G conformance test?

Thanks to the much faster, more reliable, and near-instant connections that

come with the 5G, we now see a variety of innovative and comprehensive mobile wireless communication applications every day. Base stations must now pass new conformance tests to ensure they deliver on their promises.

What tests are performed during 5G measurements?

Introduction: The following tests are generally performed during 5G measurements: Figure 1: Equipments available from Keysight Technologies for 5G measurements. References: Explore 5G measurements for User Equipment (UE) and Base Stations (BS), covering transmitter and receiver test scenarios, conformance, and network stability.

## Network communication measurement and construction of 5G base

---

### Contact Us

---

For catalog requests, pricing, or partnerships, please visit:  
<https://www.drugiswiatowykongrespolakow.pl>