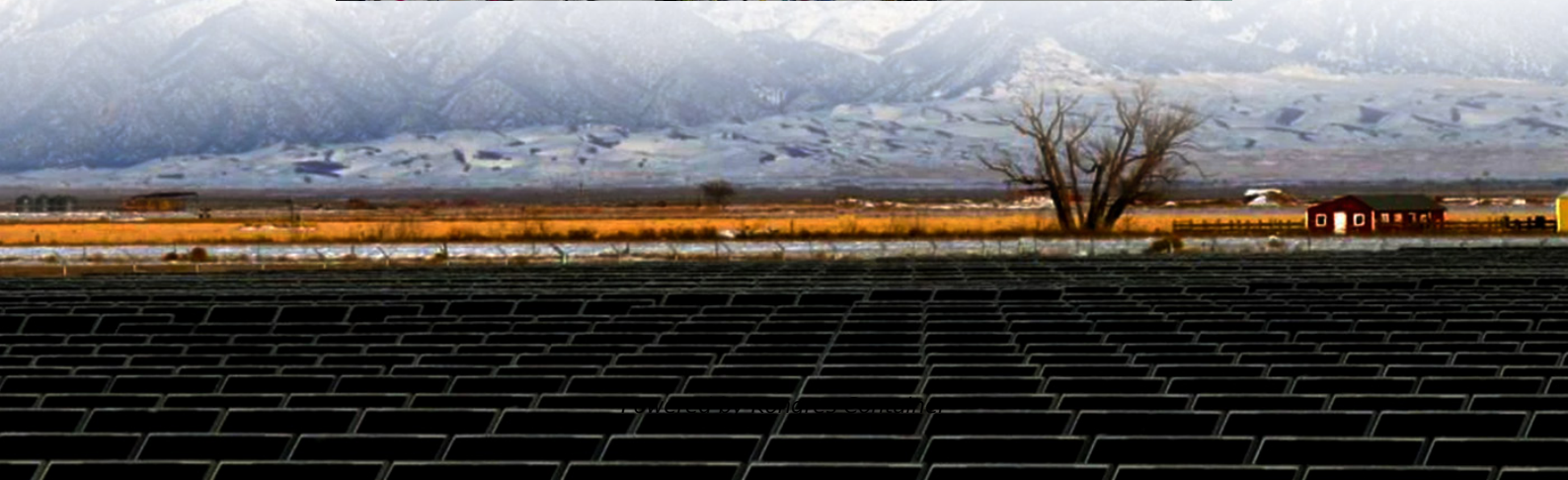
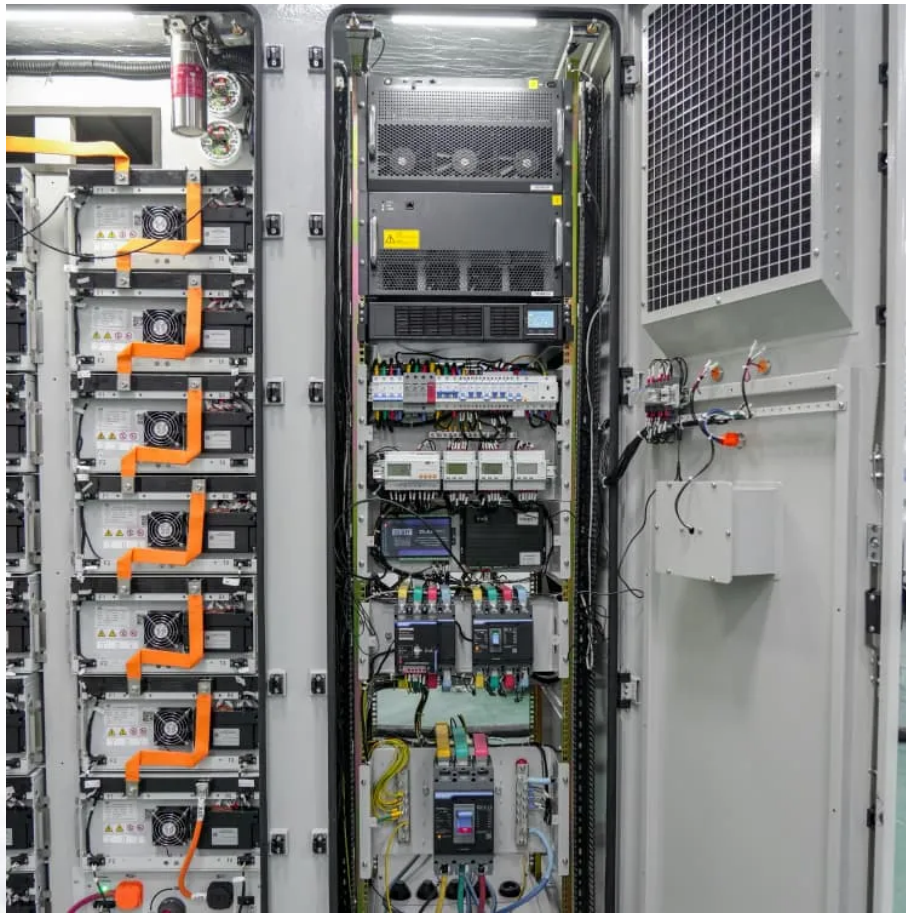


Kongres Container

Measure the voltage of the new energy lithium battery station cabinet



Overview

What should you know about lithium ion batteries?

The most important key parameter you should know in lithium-ion batteries is the nominal voltage. The standard operating voltage of the lithium-ion battery system is called the nominal voltage. For lithium-ion batteries, the nominal voltage is approximately 3.7-volt per cell which is the average voltage during the discharge cycle.

What is the nominal voltage of a lithium ion battery?

For lithium-ion batteries, the nominal voltage is approximately 3.7-volt per cell which is the average voltage during the discharge cycle. The average nominal voltage also means a balance between energy capacity and performance. Additionally, the voltage of lithium-ion battery systems may differ slightly due to variations in the specific chemistry.

How do you measure the voltage on a lithium battery?

Here is an example of a hardware setup to measure the voltage on a Lithium battery with a voltage divider and a connected capacitor. The Lithium battery typically has a voltage range of 2.7 - 4.2 V and we (Nordic) recommend that you divide the battery voltage with two resistors, $R1 = 10\text{ M}\Omega$ and $R2 = 2.2\text{ M}\Omega$.

What is the SOC voltage chart for lithium batteries?

The SoC voltage chart for lithium batteries shows the voltage values with respect to SoC percentage. A Li-ion cell when fully charged at 100%SoC can have nearly 4.2V. As it starts to discharge itself, the voltage decreases, and the voltage remains to be 3.7V when the battery is at half charge, ie, 50%SoC.

What voltage should a lithium ion battery be charged?

Voltage Range: Lithium-ion batteries typically operate between 3.6V and 4.2V

when fully charged. Ensure that the multimeter you choose has a voltage range that accommodates these levels, ideally between 0-20V DC. This will allow you to test not only lithium-ion batteries but also other common rechargeable batteries.

How do you test a lithium ion battery?

Measure the Voltage: Connect the multimeter probes to the battery terminals — the red probe to the positive terminal and the black probe to the negative terminal. Hold the probes in place for a few seconds to get an accurate reading. **Interpret the Results:** A fully charged lithium-ion battery should read between 4.1V and 4.2V.

Measure the voltage of the new energy lithium battery station cabinet

Contact Us

For catalog requests, pricing, or partnerships, please visit:
<https://www.drugiswiatowykongrespolakow.pl>