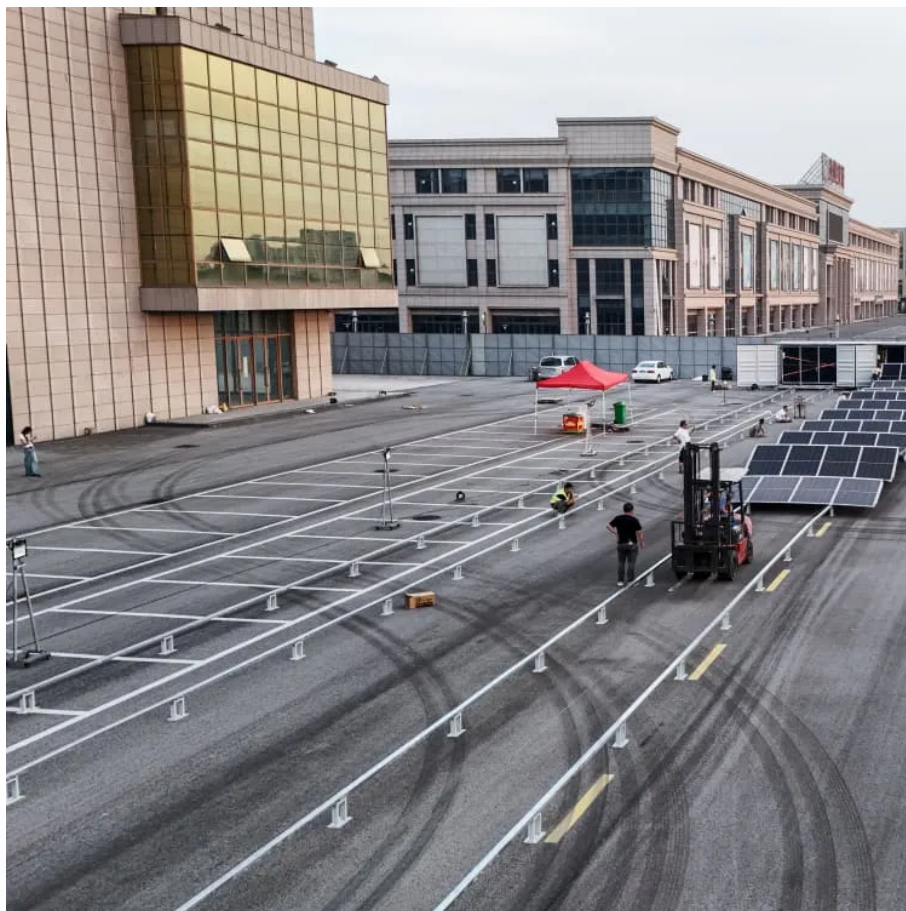


Kongres Container

Low power inverter charging



Overview

Why is my inverter battery not charging?

1. Inverter low battery problem This is when your inverter's battery doesn't have enough charge to power your devices. Causes: Solutions: Check if your battery is more than 3-5 years old. If so, it might be time to replace it. Read More:- [Manufacturer of Tubular Battery In India](#). 2. Inverter overload problem.

What are the most common inverter problems?

Whether you're dealing with an inverter low battery problem, an inverter overload problem, or any other common issue, this guide will provide you with practical inverter solutions to keep your power backup system running smoothly. Let's dive into the 15 most common inverter problems and solutions you might encounter: 1. Inverter low battery problem.

Does a hybrid inverter/charger have low voltage protection?

Both our standard inverter and hybrid inverter/chargers have low voltage protections. In a hybrid inverter, you may get warning about "battery low voltage" or "battery over-discharge", and in a standard system your charge controller and inverter may show a fault or shut off due to low battery voltage.

What voltage should an inverter charger be?

A typical inverter charger requires the voltage to be above 11.5V, assuming the inverter is 12V. If the voltage is lower than this, the system electronics will not be able to initiate a charge. The Ultrapower Battery Load Tester can check the status of your battery. Some batteries can also be charged via AC power.

What happens if a battery inverter fails?

Over time, batteries can lose their ability to hold a charge effectively, leading to a malfunctioning inverter. Inadequate battery capacity can also cause the inverter to get into trouble when it comes to charging the battery, as the

inverter may be unable to supply the necessary amount of power to charge the battery fully.

Why is my inverter NOT working?

Another possible issue is that the battery is charged but not able to power the inverter. This could indicate a problem with the inverter itself or its connection to the battery. Check the inverter for any faults or malfunctions, and ensure that it is properly connected to the battery.

Low power inverter charging

Contact Us

For catalog requests, pricing, or partnerships, please visit:
<https://www.drugiswiatowykongrespolakow.pl>