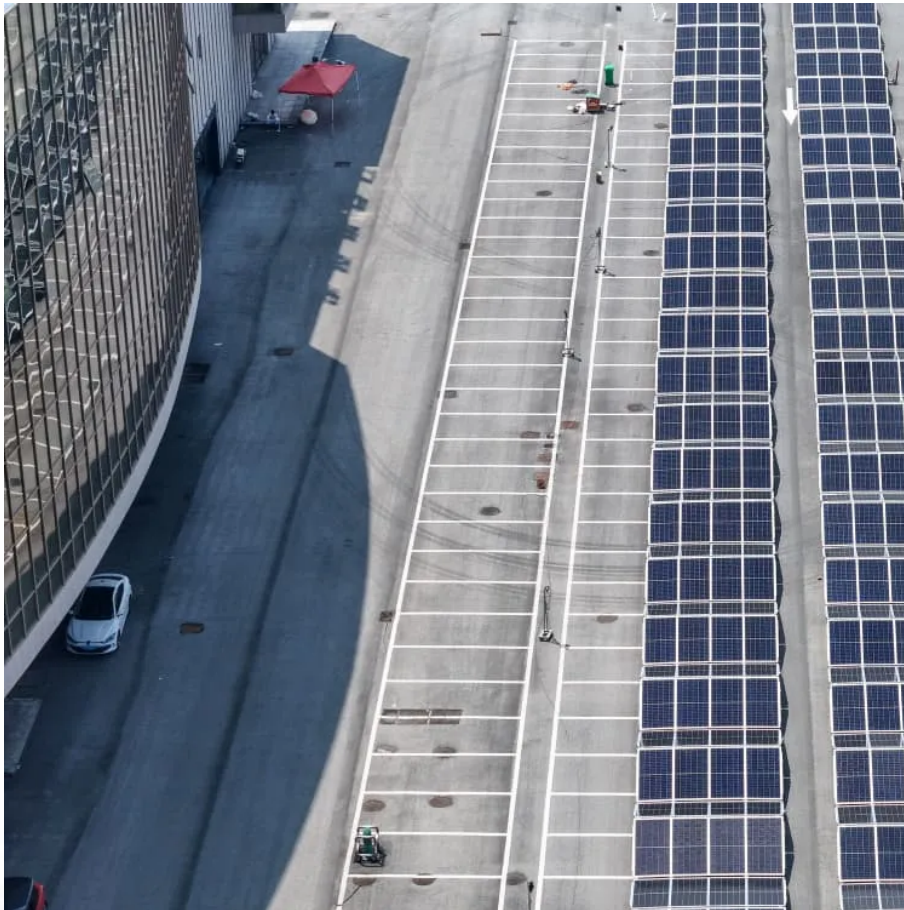


## Kongres Container

# Layout planning of large-scale energy storage power stations



## Overview

---

With the continuous development of renewable energy, it has become important to make efficient use of renewable energy. However, the uncertainty and randomness of renewable energy can cause inst.

How do energy storage devices affect power balance and grid reliability?

It is crucial to integrate energy storage devices within wind power and photovoltaic (PV) stations to effectively manage the impact of large-scale renewable energy generation on power balance and grid reliability. However, existing studies have not modelled the complex coupling between different types of power sources within a station.

Are large-scale wind and PV power stations a viable solution to the energy crisis?

Large-scale construction of wind and PV power has become a key strategy for dealing with the energy crisis. However, the variability and uncertainty of large-scale renewable energy power stations pose a series of severe challenges to the power system, such as insufficient peak-shaving capacity and high curtailment rates.

Why is energy storage a viable solution to power curtailment?

Therefore, power station equipped with energy storage has become a feasible solution to address the issue of power curtailment and alleviate the tension in electricity supply and demand.

How long does energy storage last?

In addition, considering the life loss can optimize the charging and discharging strategy of the energy storage, which extends the actual lifetime of the energy storage device from 4.93 to 7.79 years, and increases the profit of the station by 2.4%.

Does adding energy storage reduce system costs and environmental costs?

References [2, 3] evaluated the economic, energy efficiency, and

environmental impacts of adding energy storage to existing distributed generation, and the study showed that system costs and environmental costs can be reduced by adding energy storage.

How do energy storage devices work?

Energy storage devices, with their flexible charging and discharging characteristics, can store excess electricity generated by renewable energy sources during periods of low electricity demand and then release it at peak periods.

## Layout planning of large-scale energy storage power stations

---

### Contact Us

---

For catalog requests, pricing, or partnerships, please visit:  
<https://www.drugiswiatowykongrespolakow.pl>