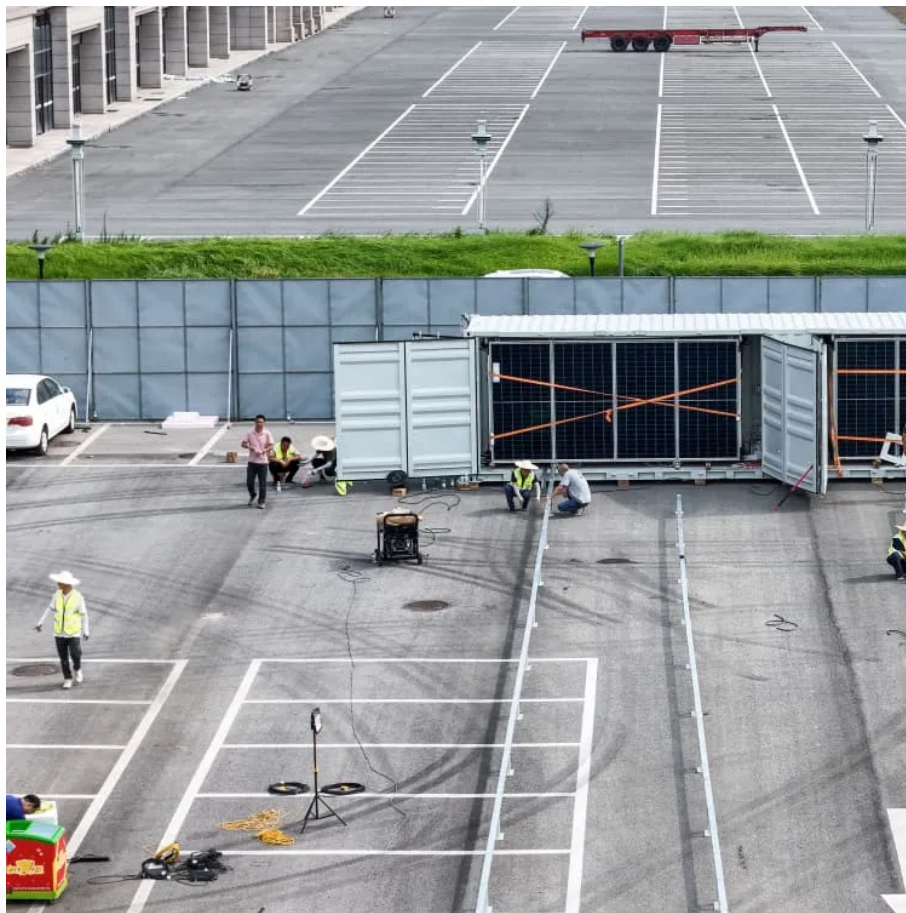


## Kongres Container

# Inverter is provided by battery pack



## Overview

---

Batteries or battery packs without an integrated inverter must be paired with an external, third-party inverter to connect to your solar panel system and home. What does a battery inverter do?

Battery inverters convert direct current (DC) stored in batteries into alternating current (AC) for use in electrical systems. They are essential in off-grid and backup power applications. According to the U.S. Department of Energy, battery inverters allow energy storage systems to supply power during outages or when solar production is low.

What kind of batteries do inverters use?

Its modular and stackable battery packs provide the storage alone but are "inverter agnostic," which is the industry's way of saying they work with anyone. Its most popular battery is the 3.8 kWh battery module, which can be stacked and nestled next to your inverter on the wall next to your electrical panel.

Does a battery pack need an inverter?

Here's a breakdown of this info for some of the biggest storage companies in the market today: Batteries or battery packs without an integrated inverter must be paired with an external, third-party inverter to connect to your solar panel system and home.

Do inverters work with lithium ion batteries?

Some inverters work with specific battery types, such as lithium-ion, lead-acid, or gel batteries. Make sure the inverter you choose matches your battery type. For instance, a lithium-ion battery paired with a compatible inverter ensures better performance and longevity, according to the International Renewable Energy Agency (IRENA).

How to choose a battery inverter?

The power rating of a battery inverter is crucial. Power rating indicates the maximum electrical load the inverter can handle. It is usually measured in watts (W). Selecting an inverter with a sufficient power rating ensures that it can supply the energy required for all connected devices.

Do inverters need a battery?

Dependency on a Power Source: Inverters require a steady DC power source to function, so you'll need a battery or other DC supply. Complex Setup: Setting up an inverter system can be complex, especially if integrating it with solar panels or other energy sources.

## Inverter is provided by battery pack

---

## Contact Us

---

For catalog requests, pricing, or partnerships, please visit:  
<https://www.drugiswiatowykongrespolakow.pl>