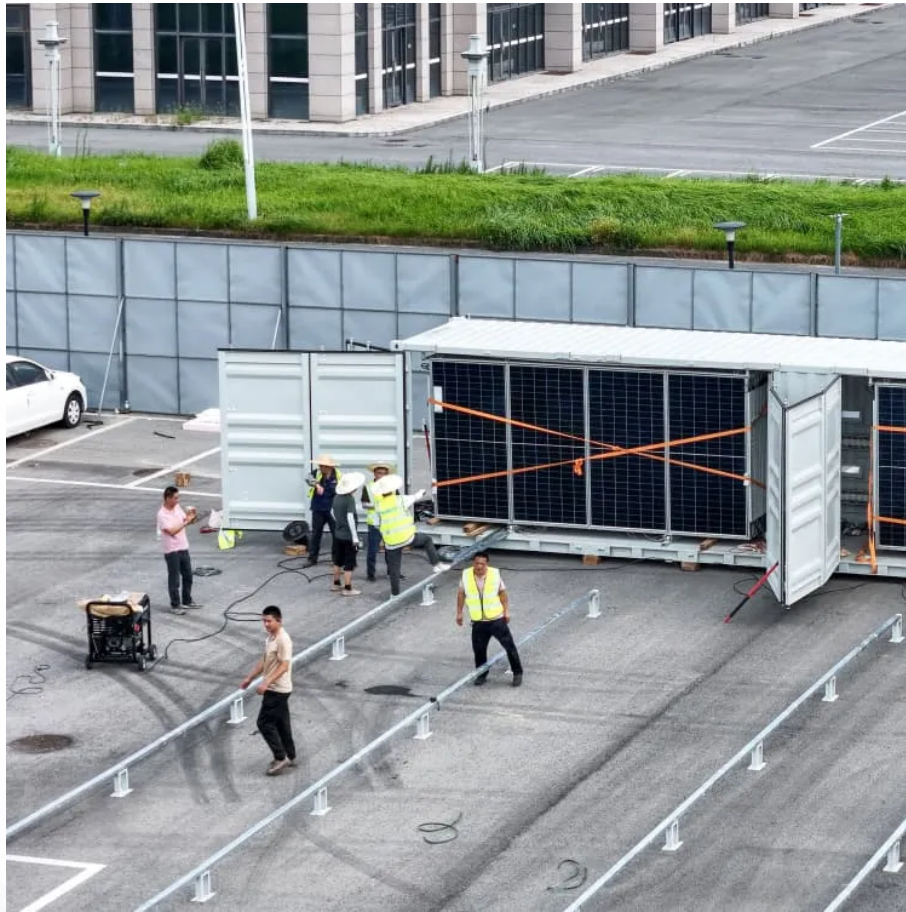


Kongres Container

Inverter 220 can be converted to 24 volts



Overview

What is a 24V inverter?

A 24V inverter is a power conversion device whose main function is to convert 24V DC power into AC power (usually 220V or 110V, depending on the specific model and application). The DC to AC power inverters offer you 110V, 120V, 220V, 230V, or 240V AC energy to charge your electronics or appliances.

What is 220V to 24V isolated DC-DC converter?

220V to 24V isolated DC-DC converter is a step down converter that uses a synchronous rectification technology, and features high efficiency and power density. It provides that rated output voltage of 24V and the maximum output current of 12.5A. 100% full power, high stability output. 100% full load aging test.

What is a 24V 600W inverter?

Inverter for home has overload protection, overheat protection, short circuit protection, and so on. 24V 600w inverter with peak power 1200w, which is a modified sine wave, converts your car battery power to AC power 110/120 Volt or 220/230/240 Volt for options, with a safe charging design to give your device multi-protection.

Can a DC/AC power inverter convert 24VDC to 24vac?

Inexpensive DC/AC power inverter light weight and small size will convert 24vdc to 24vac. Makes 24 VAC equipment usable in 24 VDC installations. DC to AC inverter can work with solar or battery back-up systems. Useful for solar powered security systems. Also useful for irrigation system controllers.

Are 24V inverters a good choice?

The higher efficiency of 24V inverters typically results in lower energy losses and reduced operating costs over time. Additionally, 24V systems generally require thinner, less expensive wiring due to lower current needs. However,

24V batteries and some components may be pricier initially.

What is a 220 volt power transformer?

The specific power transformer discussed in this documentation is designed to convert a high-voltage alternating current (AC) of 220 volts to a lower voltage AC of 24 volts. This type of transformer is commonly used in power supply applications where equipment requires a lower operating voltage.

Inverter 220 can be converted to 24 volts

Contact Us

For catalog requests, pricing, or partnerships, please visit:
<https://www.drugiswiatowykongrespolakow.pl>