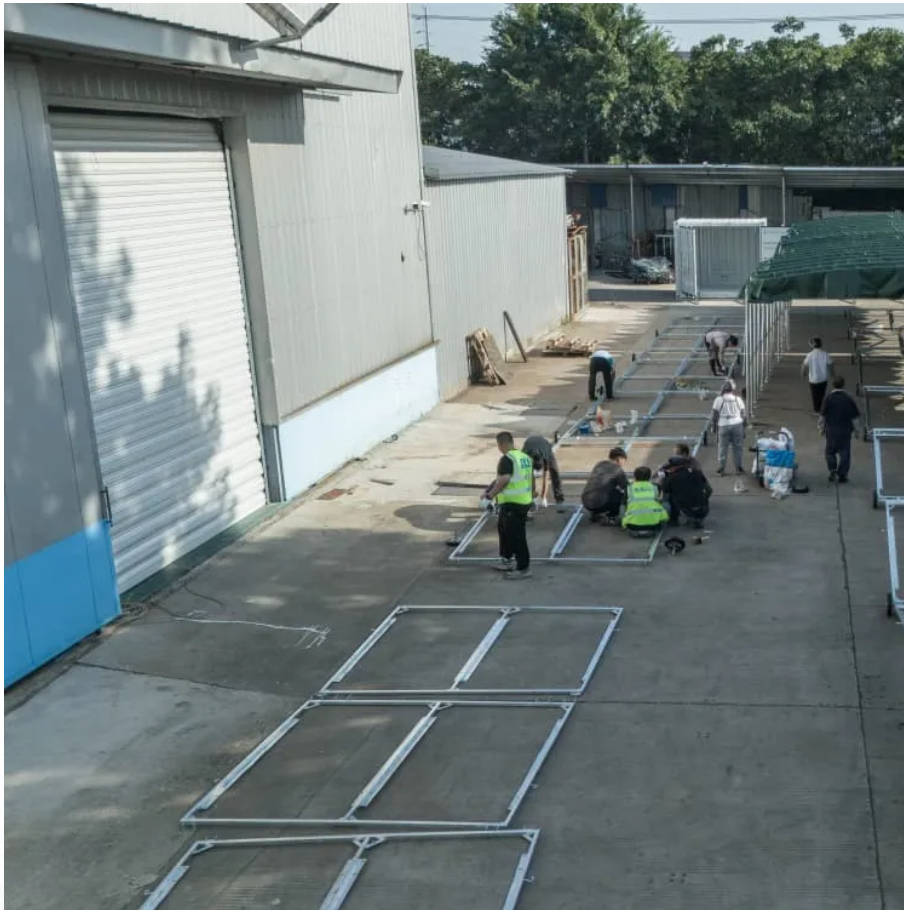


## Kongres Container

# Innovation of flywheel energy storage



## Overview

---

What is a flywheel energy storage system (fess)?

The operation of the electricity network has grown more complex due to the increased adoption of renewable energy resources, such as wind and solar power. Using energy storage technology can improve the stability and quality of the power grid. One such technology is flywheel energy storage systems (FESSs).

Can flywheel energy storage systems improve vehicular performance and sustainability?

Examined the pivotal role of Flywheel Energy Storage Systems (FESS) in enhancing vehicular performance and sustainability. Conducted a comprehensive analysis of FESS technologies and their integration with current vehicle powertrain systems. Evaluated the benefits and challenges of FESS in automotive applications.

What is the development trend of Flywheel energy storage technology?

We identified the development trend of flywheel energy storage technology. Flywheel energy storage (FES) technology, as one of the most promising energy storage technologies, has rapidly developed. It is essential to analyze the evolution path of advanced technology in this field and to predict its development trend and direction.

What are the application areas of flywheel technology?

Application areas of flywheel technology will be discussed in this review paper in fields such as electric vehicles, storage systems for solar and wind generation as well as in uninterrupted power supply systems. Keywords - Energy storage systems, Flywheel, Mechanical batteries, Renewable energy.  
1. Introduction.

What is flywheel energy storage?

The flywheel energy storage is a substitute for steam-powered catapults on aircraft carriers. The use of flywheels in this application has the potential for weight reduction. The US Marine Corps are researching the integration of flywheel energy storage systems to supply power to their base stations through renewable energy sources.

Can flywheel technology improve the storage capacity of a power distribution system?

A dynamic model of an FESS was presented using flywheel technology to improve the storage capacity of the active power distribution system . To effectively manage the energy stored in a small-capacity FESS, a monitoring unit and short-term advanced wind speed prediction were used . 3.2. High-Quality Uninterruptible Power Supply

## Innovation of flywheel energy storage

---

### Contact Us

---

For catalog requests, pricing, or partnerships, please visit:  
<https://www.drugiswiatowykongrespolakow.pl>