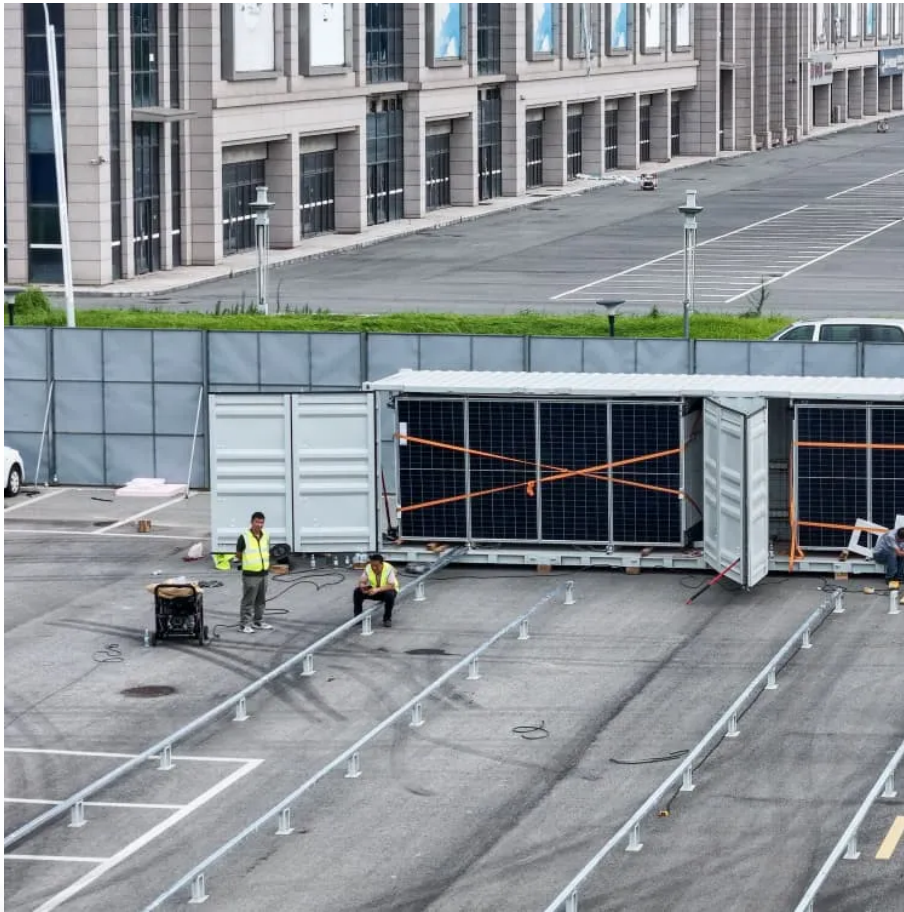


Kongres Container

Industrial inverter output voltage is too low



Overview

This is caused by low intermediate circuit DC voltage. This can be caused by a missing supply voltage phase from a blown fuse or faulty isolator or contactor or internal rectifier bridge fault or simply low mains voltage. POSSIBLE FIXES: Check mains supply and fuses.

This is caused by low intermediate circuit DC voltage. This can be caused by a missing supply voltage phase from a blown fuse or faulty isolator or contactor or internal rectifier bridge fault or simply low mains voltage. POSSIBLE FIXES: Check mains supply and fuses.

However, voltage instability, particularly low voltage issues, can lead to system malfunctions, equipment failure, and operational disruptions. Understanding the causes and implementing effective solutions can help maintain inverter performance and prevent costly downtime. In this article, we.

Are you experiencing voltage troubles with your inverter?

Don't worry, you're not alone. Many people face issues with inverter low voltage at some point in their lives. In this blog post, we will guide you on how to diagnose and potentially fix these problems. Before we dive into the causes and.

Are you having problems with equipment connected to this inverter?

No, the voltage is definitely low. Let us not question that, it is low on my Fluke meter, it is making a light bulb glow orange, and the voltage tester is only giving me one light output. The unit is a charger inverter. The charger.

I have Gel tech 12V300ah battery, connecting just fridge and error 52 showed up (Inverter bus voltage is too low). I checked cable and settings. Does anybody have an idea what can fix it?

Whatever you did, that's what you planned. What is the inverter's model #?

What is the inverter's model #?

.

These faults include external faults, transformer overheating, cabinet temperature overheating, unit faults, inverter over-current, high voltage power loss, interface board failure, controller communication failure, interface board communication failure, motor overload, parameter error, and main.

Troubleshoot low voltage output quickly in 15 minutes by identifying common causes—discover how to restore stable power fast. The post has been shared by people. To quickly fix low voltage output, start by inspecting your power source and making sure connections are tight and secure. Test the.

Industrial inverter output voltage is too low

Contact Us

For catalog requests, pricing, or partnerships, please visit:
<https://www.drugiswiatowykongrespolakow.pl>