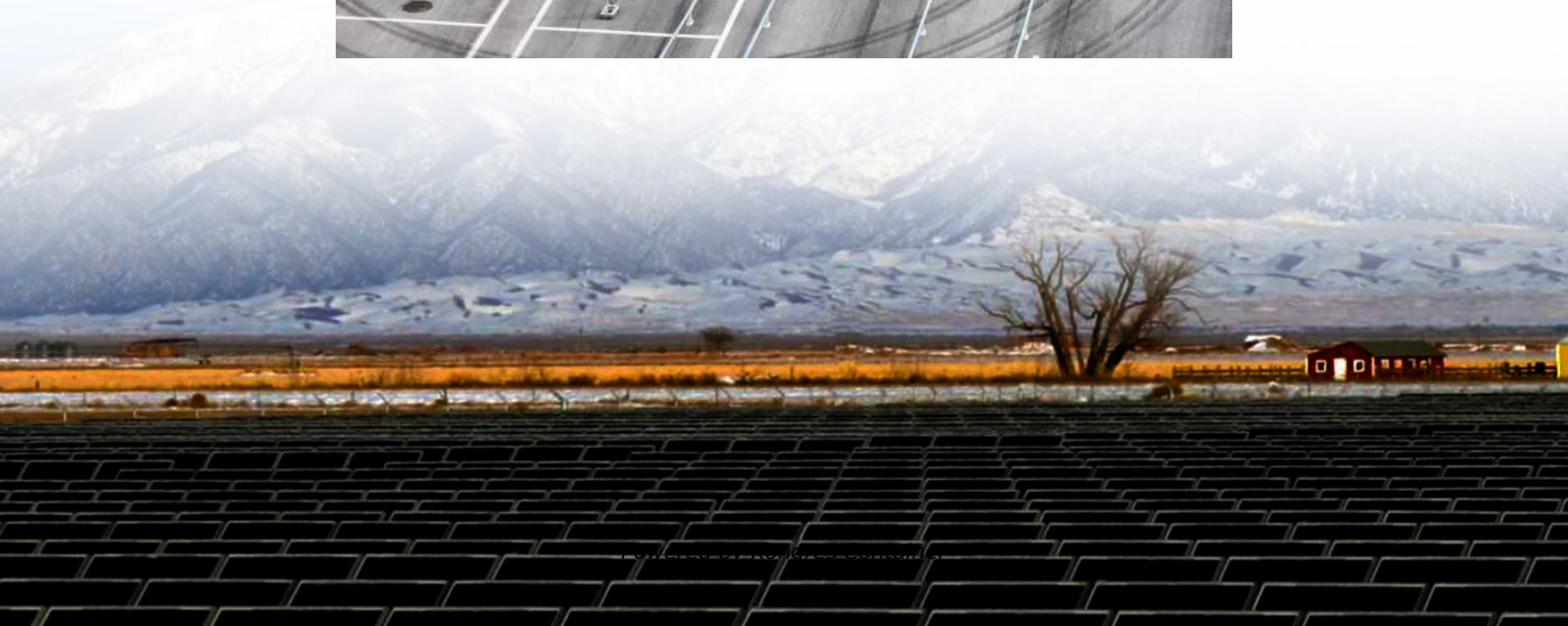
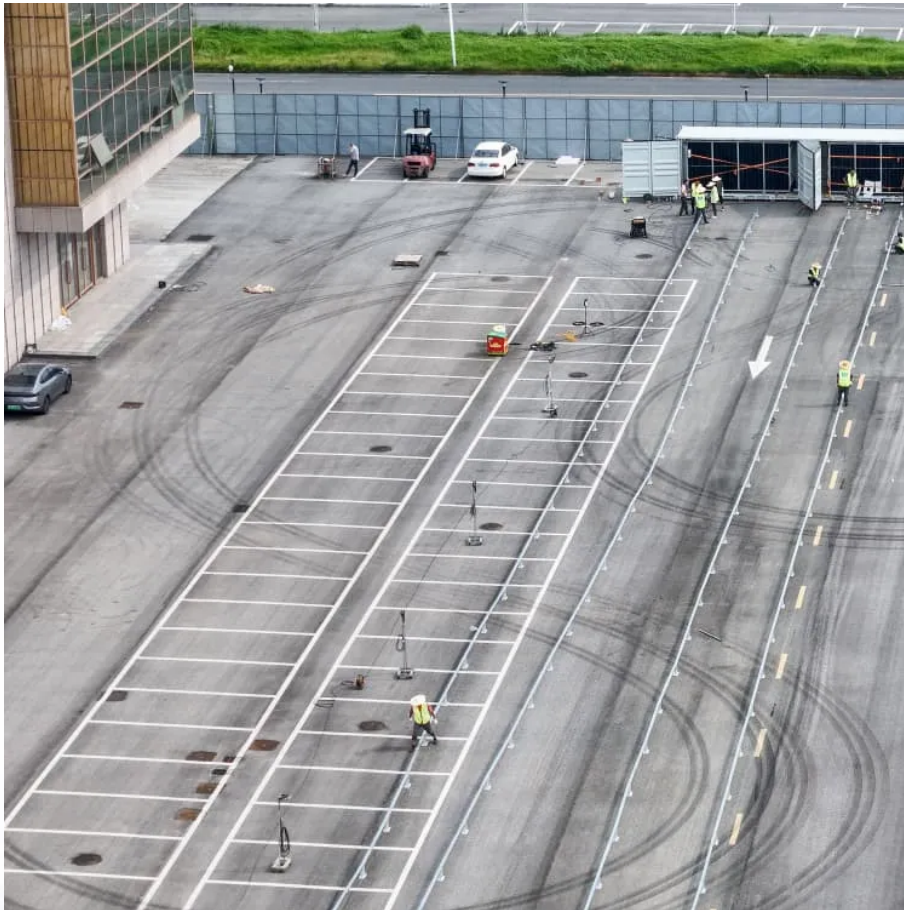


## Kongres Container

# Iceland Energy Storage Power Processing



## Overview

---

In 1905 a power plant was set up in , a town which is a suburb of Reykjavík. Reykjavík wanted to copy their success, so they appointed Thor Jenssen to run and build a gas station, Gasstöð Reykjavíkur. Jenssen could not get a loan to finance the project, so a deal was made with Carl Francke to build and run the station, with options for the city to buy him out. Construction starte.

## Iceland Energy Storage Power Processing

---

### Contact Us

---

For catalog requests, pricing, or partnerships, please visit:  
<https://www.drugiswiatowykongrespolakow.pl>