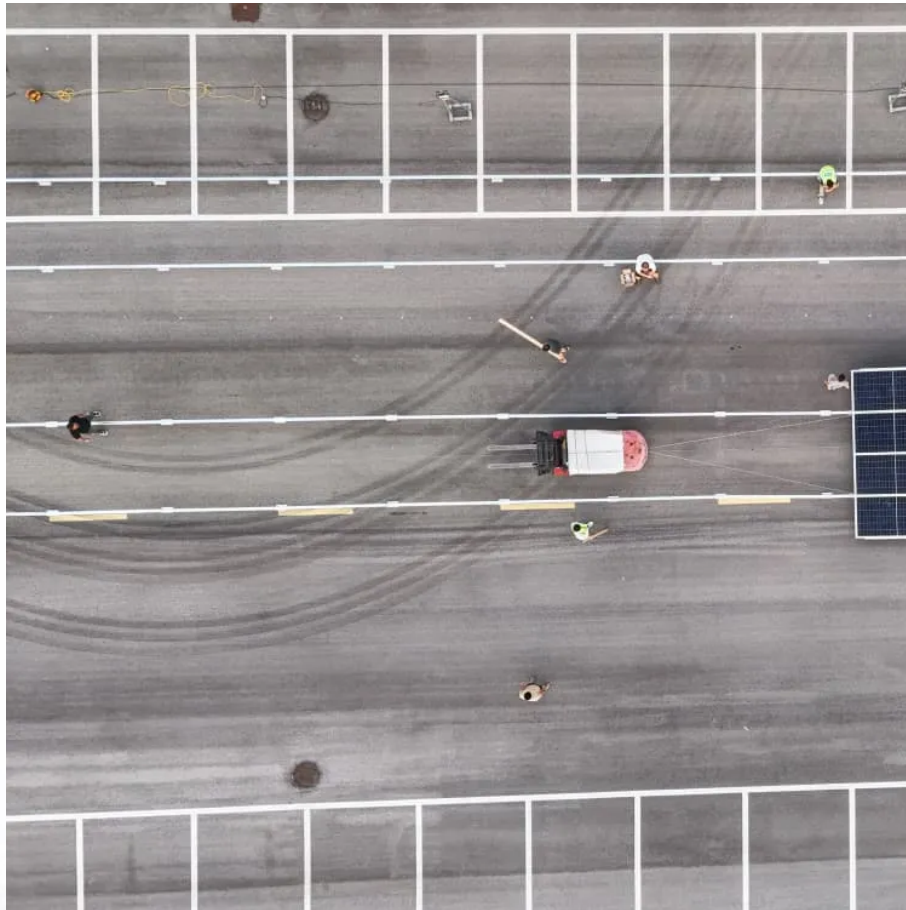


Kongres Container

How much electricity can a solar inverter provide



Overview

A solar inverter typically has power ratings that range significantly, usually between 1 kW to over 10 kW. What is a solar inverter?

A solar inverter is the electronic heart of your solar power system—a sophisticated device that converts the direct current (DC) electricity generated by your solar panels into the alternating current (AC) electricity that powers your home and feeds into the electrical grid. Think of it like a translator at the United Nations.

What is solar inverter efficiency?

Solar inverter efficiency determines how well an inverter converts the DC electricity created by solar panels to AC electricity that can be used in our homes and by the grid. Inverters are an integral part of any solar installation. Without them, our installations would actually be useless, since we couldn't use the electricity they produced.

Do you need a solar inverter?

Inverters are an integral part of any solar installation. Without them, our installations would actually be useless, since we couldn't use the electricity they produced. No inverter is 100% efficient, as there will always be at least some loss of energy during the conversion process.

How does a solar inverter work?

Think of it like a translator at the United Nations. Just as a translator converts spoken French into English so different delegates can communicate, a solar inverter converts DC "language" into AC "language" so your solar energy can communicate with your home's electrical system.

How efficient are inverters?

The inverters must be coupled with the company's module-level power optimizers — which see an efficiency of 98.8% — dropping the total efficiency

of the entire inverter/optimizer system down to 97.8% efficient (which is actually still really, really good!) See below for details and links to product spec sheets.

How many Watts should a solar inverter handle?

For example, if you have 30 panels each rated at 265 watts, you need an inverter that can handle an output of 7,950 watts (probably an inverter rated around 8kW). Any more than this is just money down the drain.

How much electricity can a solar inverter provide

Contact Us

For catalog requests, pricing, or partnerships, please visit:
<https://www.drugiswiatowykongrespolakow.pl>