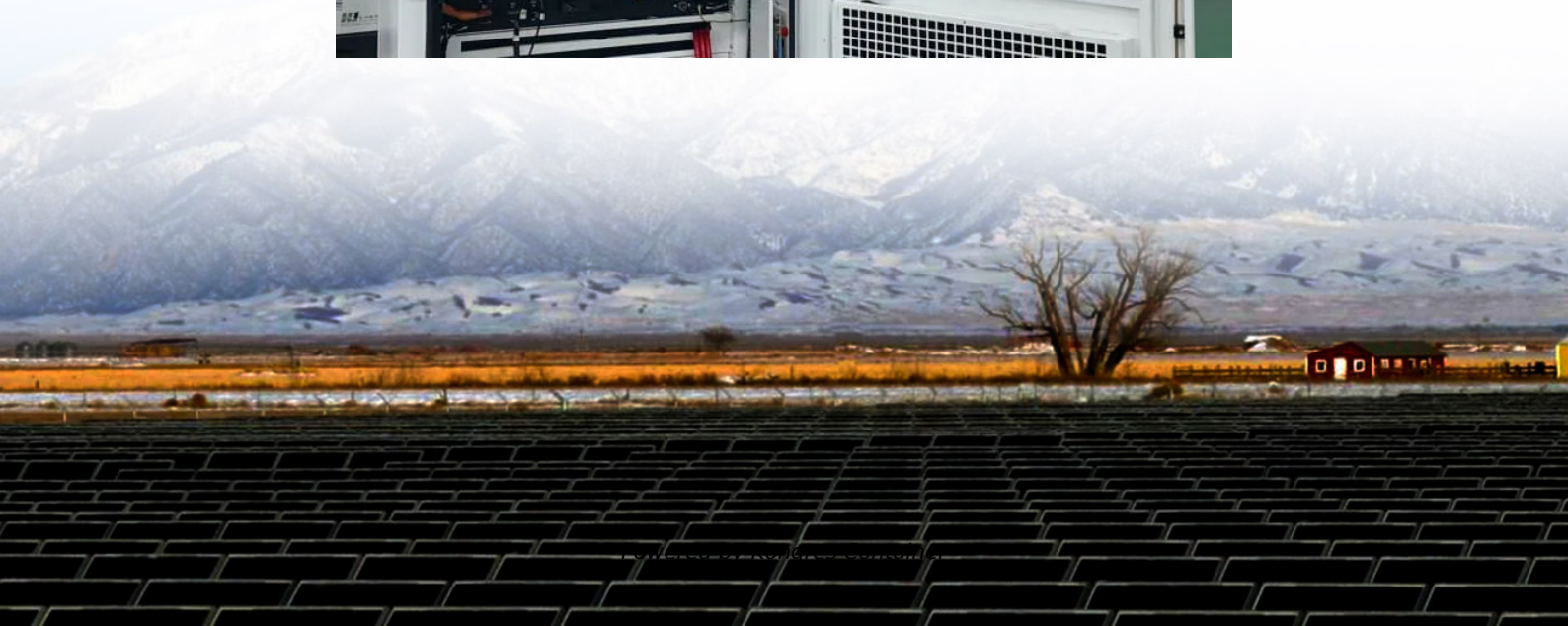


Kongres Container

How many watts of power does a base station require



Overview

The antenna output power level is typically between 20 watts and a few hundred watts for an outdoor base station. Television transmitters, by comparison, have 10-1000 times higher output power than outdoor base stations.

The antenna output power level is typically between 20 watts and a few hundred watts for an outdoor base station. Television transmitters, by comparison, have 10-1000 times higher output power than outdoor base stations.

What's enough power for a base station?

I'm looking at putting a small base station into the kitchen of our ranch home for communicating with the HTs outside. Distance is usually within a mile or two, there's a ~7watt repeater about 3 miles away up high with 6.5 db antenna gain. I've heard that the.

95.1767 (a) (1) Transmitter power of mobile, repeater, and base stations must not exceed 50 watts. This is for the "main" (a/k/a repeater input/output) channels. It seems that the term "fixed station" is no longer defined by the new rules, so that 15 watt limit seems meaningless. It appears that.

Mobile phones and other mobile devices require a network of base stations in order to function. The base station antennas transmit and receive RF (radio frequency) signals, or radio waves, to and from mobile phones near the base station. Without these radio waves, mobile communications would not be.

Hi all, need some clarification for base power requirements. Guy in a Facebook group thought I could only run my BTech 50X1 at 15 watts for base. I did a google search and found this citing at Cornell Law. (a) 462/467 MHz main channels. The limits in this paragraph apply to stations transmitting on.

The power, advanced features and versatility of the typical mobile radio allows it to be easily converted into a base station. It can be placed on a table or desk without a mount or hardware, connected to a proper antenna, powered

on, and it's ready to go on the air. Of course, there is a little.

Unlike gear from past decades, today's Ham radios operate on 13.8-volt power. Why 13.8V?

It's the average voltage that an automobile electrical system produces, allowing your radio to be powered in your vehicle or at home. With a few exceptions—like amplifiers—you won't plug your gear directly into.

How many watts of power does a base station require

Contact Us

For catalog requests, pricing, or partnerships, please visit:
<https://www.drugiswiatowykongrespolakow.pl>