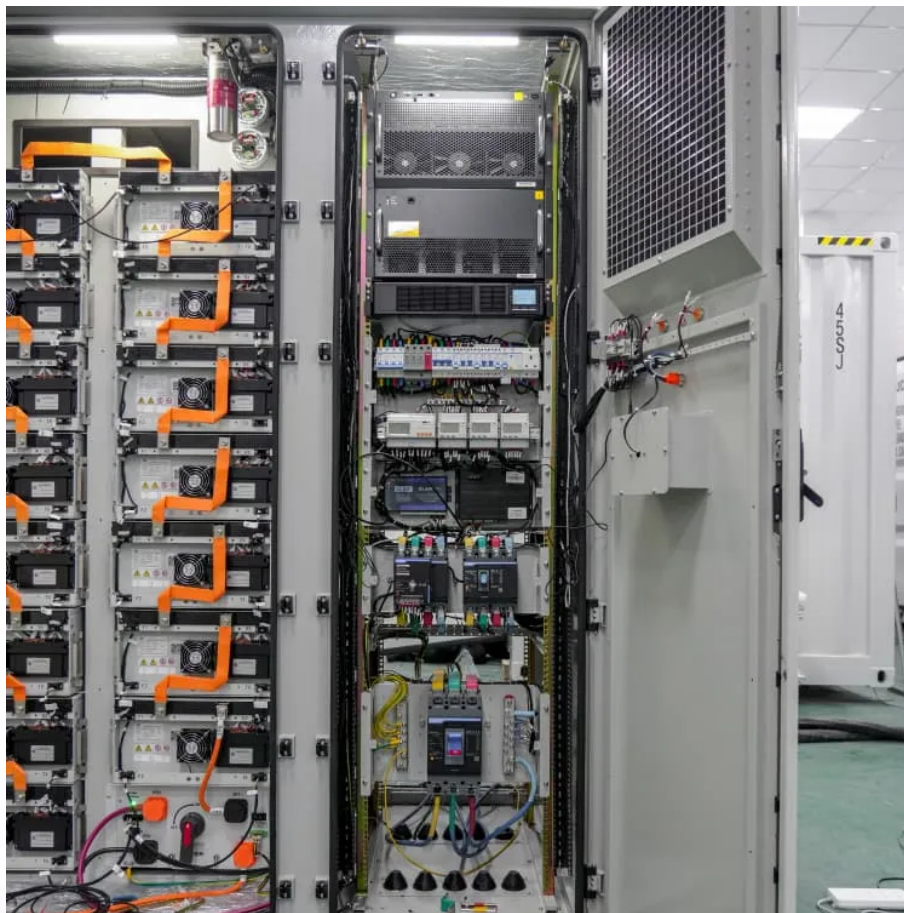


Kongres Container

How many watts does a 35v solar battery have



Overview

A 12V 35ah battery is 420 watts, so it takes at least 420 watts solar power to fully recharge it. Because solar panel production fluctuates, you should get a solar array that produces 500 watts. It does not have to be exactly 500 watts. It can be higher than that.

A 12V 35ah battery is 420 watts, so it takes at least 420 watts solar power to fully recharge it. Because solar panel production fluctuates, you should get a solar array that produces 500 watts. It does not have to be exactly 500 watts. It can be higher than that.

A 12V 35ah battery can be recharged by two 250 watt solar panels in an hour or by five 100W panels in 5 hours. If the battery is partially discharged at 50%, the charge time will be half that in clear weather. The number of solar panels you need will depend on how depleted the battery is. The.

To determine the wattage of a solar charging battery, one must consider several factors including the battery type, its capacity measured in amp-hours (Ah), and the system's voltage. 1. Standard solar batteries often range from 100 to 300 watts, 2. but specialized systems can exceed 1,000 watts, 3.

Result: You need about 120 watt solar panel to fully charge a 12v 50ah lithium (LiFePO4) battery from 100% depth of discharge in 6 peak sun hours. Read the below post to find out how fast you can charge your battery. Related Post: Guide: Maximum Charging Current & Voltage For 12v Battery Follow.

An off-grid solar system's size depends on factors such as your daily energy consumption, local sunlight availability, chosen equipment, the appliances that you're trying to run, and system configuration. Below is a combination of multiple calculators that consider these variables and allow you to.

A 100-watt solar panel can charge a 12V 35Ah battery in 4-6 hours, depending on sunlight intensity. For faster charging, use a 140-watt panel combined with an MPPT controller. Always check the battery type and usage to maximize system efficiency and ensure optimal energy capacity. Given an average.

Typically, a single solar panel with an output of 20-30 watts can effectively charge a 35Ah battery. To determine the number of solar panels required to charge a 35Ah battery, it's crucial to understand the relationship between battery capacity and solar panel output. Battery capacity is typically.

How many watts does a 35v solar battery have

Contact Us

For catalog requests, pricing, or partnerships, please visit:
<https://www.drugiswiatowykongrespolakow.pl>