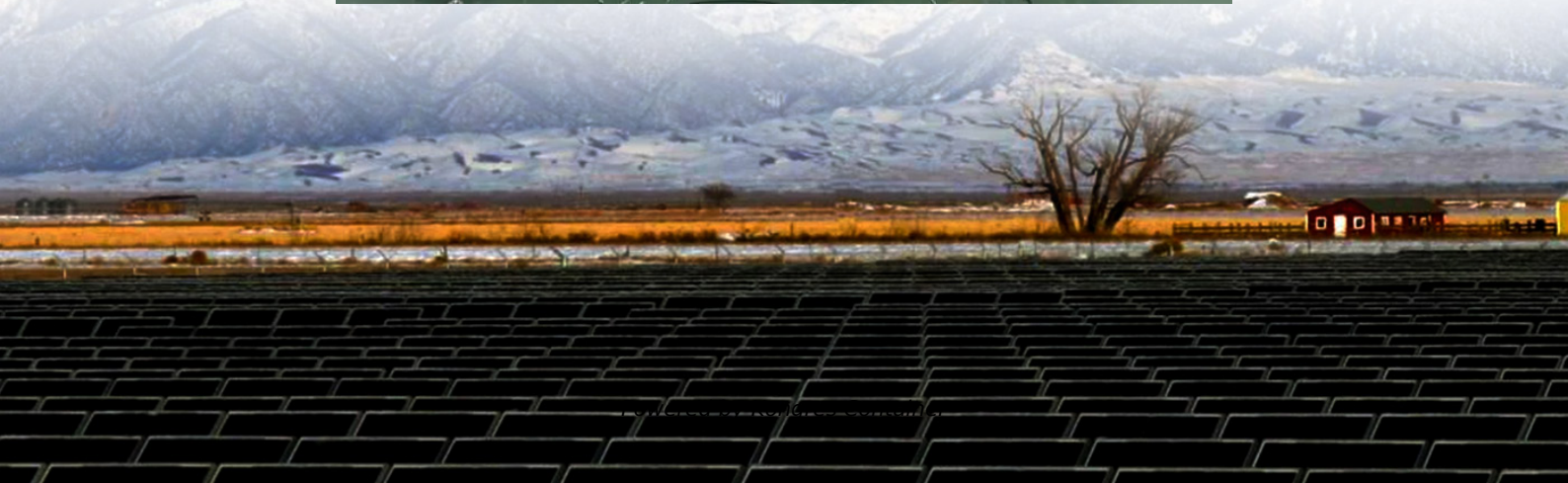
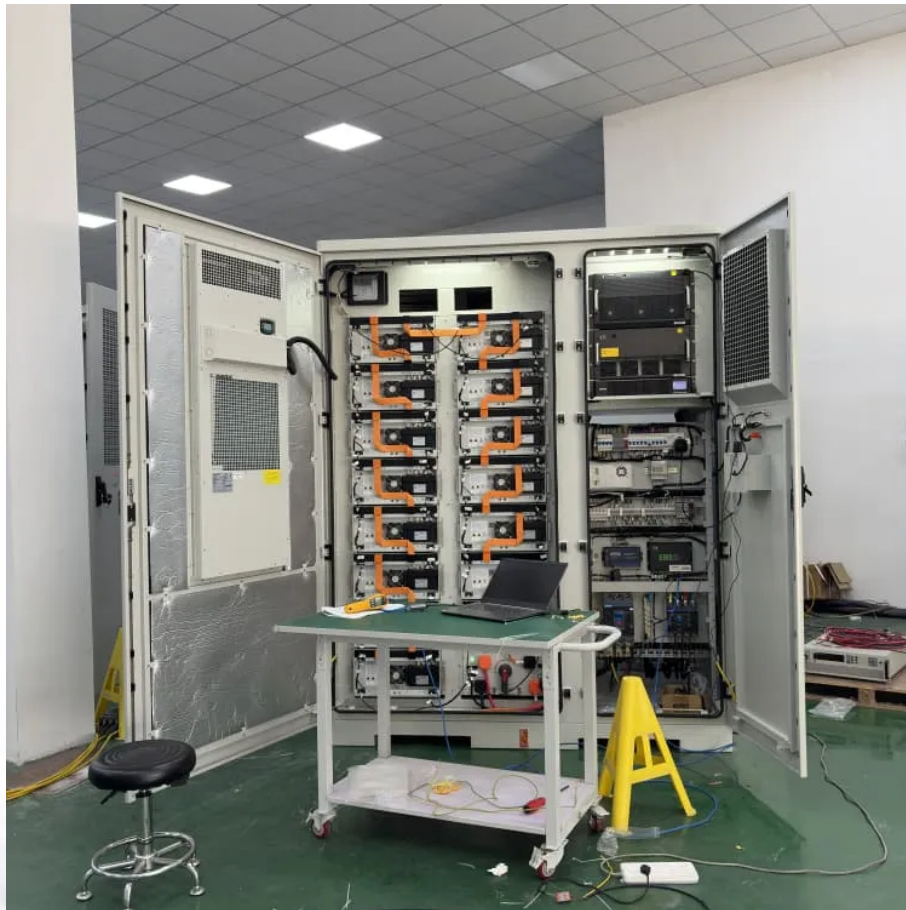


## Kongres Container

# How many batteries are in the base station energy management system



## Overview

---

To apply an accurate energy storage metric, one should delve into the average capacity of batteries deployed in these installations. Roughly, these batteries range from 5 kWh to 300 kWh per base station depending on their purpose and deployment scenario.

To apply an accurate energy storage metric, one should delve into the average capacity of batteries deployed in these installations. Roughly, these batteries range from 5 kWh to 300 kWh per base station depending on their purpose and deployment scenario.

How many tons of energy storage batteries are used in base stations?

To determine the tons of energy storage batteries utilized in base stations, one must consider several critical components: 1. The total number of base stations installed globally, 2. The average battery capacity of a single base.

by an agency of the U.S. Government. Neither the U.S. Government nor any agency thereof, nor any of their employees, makes any warranty, expressed or implied, or assumes any legal liability or responsibility for the accuracy, completeness, or usefulness, of any information, apparatus, product, or.

Battery storage is a technology that enables power system operators and utilities to store energy for later use. A battery energy storage system (BESS) is an electrochemical device that charges (or collects energy) from the grid or a power plant and then discharges that energy at a later time to.

ers lay out low-voltage power distribution and conversion for a b de ion – and energy and assets monitoring – for a utility-scale battery energy storage system entation to perform the necessary actions to adapt this reference design for the project requirements. ABB can provide support during all.

Telecom base stations—integral nodes in wireless networks—rely heavily on uninterrupted power to maintain connectivity. To ensure continuous operation during power outages or grid fluctuations, telecom operators deploy robust backup battery systems. However, the efficiency, reliability, and safety.

Battery Energy Storage Systems (BESS) are pivotal in modern energy landscapes, enabling the storage and dispatch of electricity from renewable sources like solar and wind. As global demand for sustainable energy rises, understanding the key subsystems within BESS becomes crucial. These include the.

## How many batteries are in the base station energy management system?

---

### Contact Us

---

For catalog requests, pricing, or partnerships, please visit:  
<https://www.drugiswiatowykongrespolakow.pl>