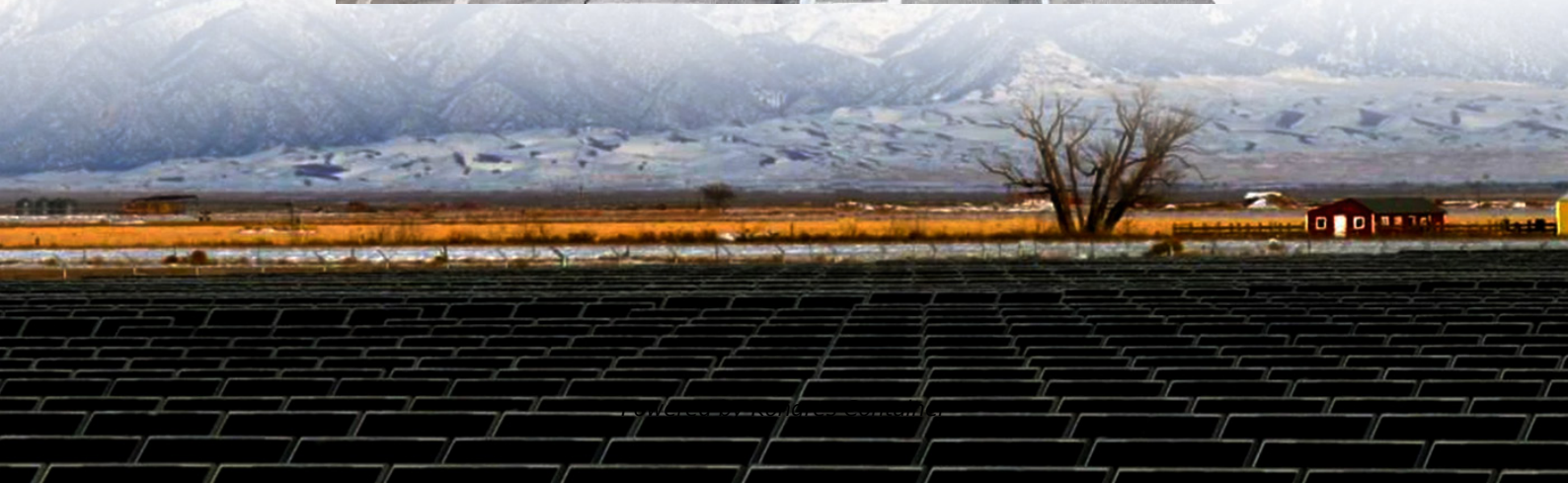
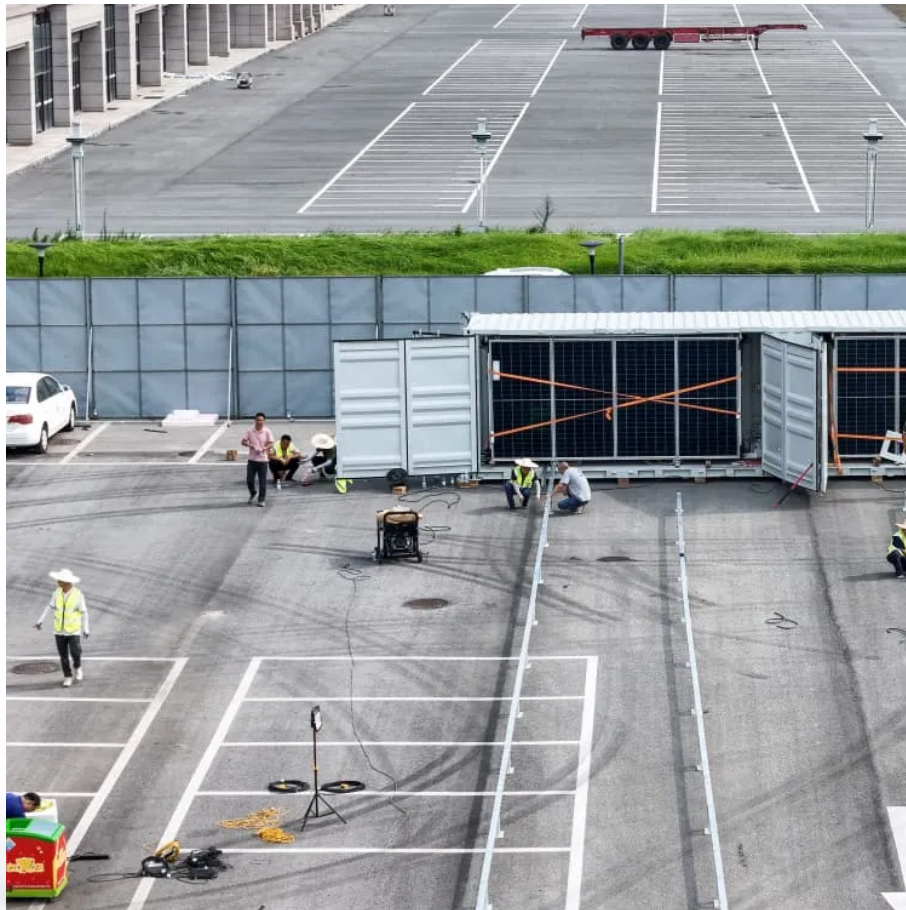


Kongres Container

How long can a 1000ah battery in a communication base station last



Overview

Telecom batteries typically last 3-8 years, depending on battery type, operating conditions, and maintenance. Valve-regulated lead-acid (VRLA) batteries average 3-5 years, while lithium-ion variants often exceed 7 years.

Telecom batteries typically last 3-8 years, depending on battery type, operating conditions, and maintenance. Valve-regulated lead-acid (VRLA) batteries average 3-5 years, while lithium-ion variants often exceed 7 years.

Once installed in communication base stations, these batteries typically do not require replacement for several years. Therefore, it is crucial to enhance battery maintenance to improve its operational conditions, which in turn can effectively extend the battery's lifespan. Online battery.

How long do telecom batteries last?

Telecom batteries typically last 3-8 years, depending on battery type, operating conditions, and maintenance. Valve-regulated lead-acid (VRLA) batteries average 3-5 years, while lithium-ion variants often exceed 7 years. Proper temperature control, regular.

This calculator simplifies the process of determining how long a battery will last under specific conditions. It features inputs for battery capacity, voltage, type, state of charge, depth of discharge limit, inverter usage, and total output load. There's a clear result display and a reset button.

The battery life of a DMR Base Station depends on a bunch of factors. 1. Power Consumption The power consumption of a DMR Base Station is a major factor. Different models have different power requirements. Some base stations are designed to be more energy - efficient, while others might use more.

Telecommunication battery (telecom battery), also known as telecom backup battery or telecom battery bank, primarily refer to the backup power systems used in base stations and are a core component of these systems. However, their applications extend far beyond this. They are also frequently used.

This battery life calculator estimates how long a battery will last, based on nominal battery capacity and the average current that a load is drawing from it. Battery capacity is typically measured in Amp-hours (Ah) or milliamp-hours (mAh), although Watt-hours (Wh) is occasionally used. You can.

How long can a 1000ah battery in a communication base station last

Contact Us

For catalog requests, pricing, or partnerships, please visit:
<https://www.drugiswiatowykongrespolakow.pl>