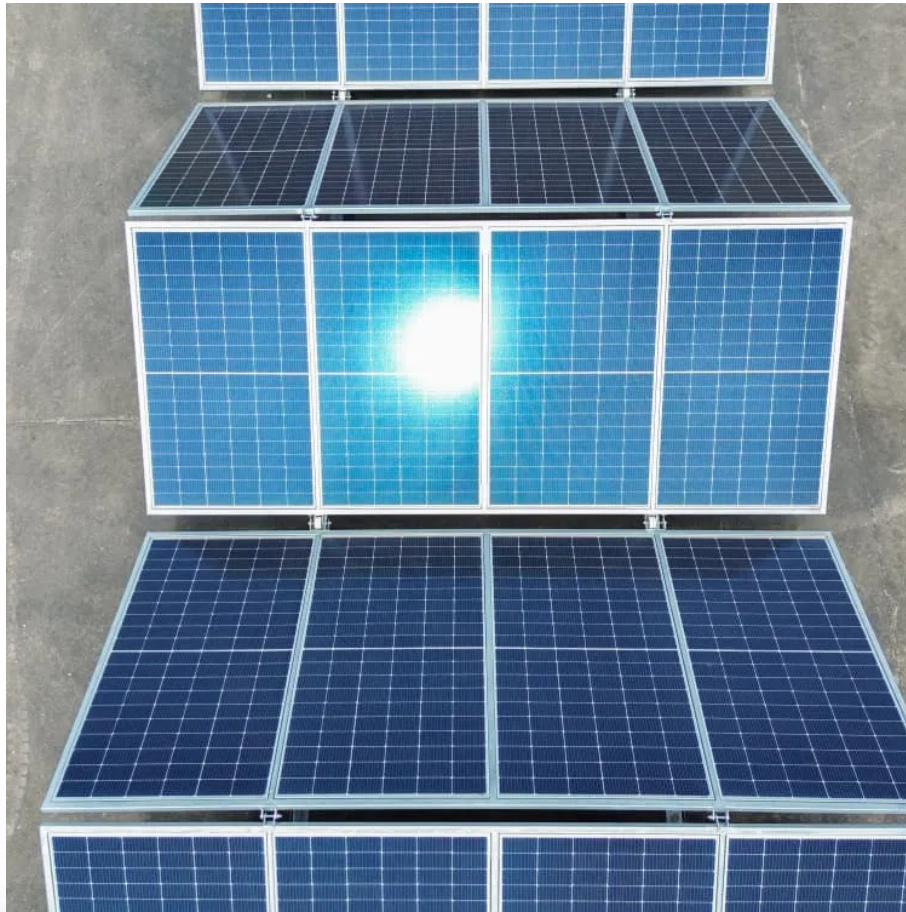


## Kongres Container

# How long and wide is 1 kilowatt solar panel



## Overview

---

At roughly 1.6 to 1.7 meters tall and one meter wide, these panels are simple to lift and place on rooftops. They generate 300 to 400 watts each, ideal for most homes.

At roughly 1.6 to 1.7 meters tall and one meter wide, these panels are simple to lift and place on rooftops. They generate 300 to 400 watts each, ideal for most homes.

There is no standardized chart that will tell you, for example, “A typical 300-watt solar panel is this long and this wide.” If you want to calculate how many solar panels you can put on your roof, you will obviously need to know the size of a solar panel. Example: 5kW solar system is comprised of.

A 60-cell panel (often seen on home rooftops) is roughly 1.6-1.7 meters tall and 1 meter wide, and its power output ranges from about 250 W to 400 W depending on the technology. On the other hand, a 72-cell panel (common in larger installations) is around 2 meters by 1 meter and usually outputs.

## How long and wide is 1 kilowatt solar panel

---

### Contact Us

---

For catalog requests, pricing, or partnerships, please visit:  
<https://www.drugiswiatowykongrespolakow.pl>