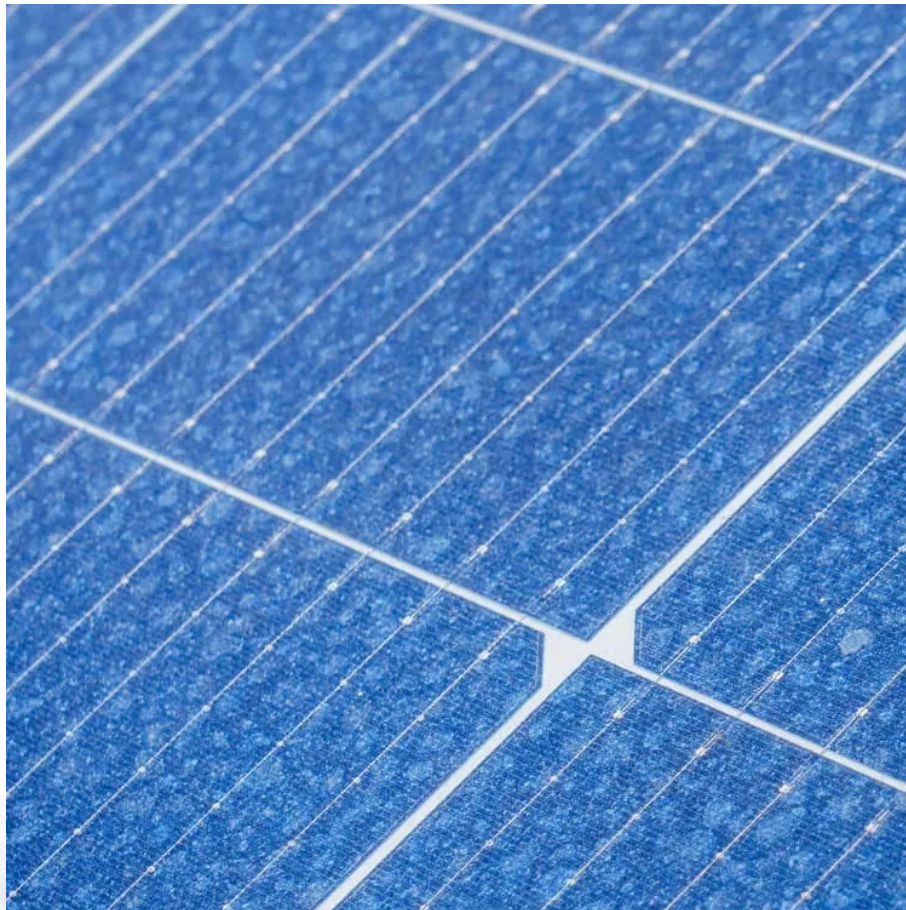


Kongres Container

How big an inverter should I use for a 30kw solar power station



Overview

Generally, it's recommended to size the inverter to 80-100% of the DC system's rated capacity. Before determine the inverter size, the most important thing is to calculate your average daily power consumption (kWh) and calculate your solar panel array size to match your power.

Generally, it's recommended to size the inverter to 80-100% of the DC system's rated capacity. Before determine the inverter size, the most important thing is to calculate your average daily power consumption (kWh) and calculate your solar panel array size to match your power.

This guide breaks down what size solar inverter you actually need—so your setup runs smooth, efficient, and stress-free from day one. **What Size Solar Inverter Do I Need?**

A solar inverter should closely match your solar system's output in kW—typically within 80% to 120% of your total panel capacity.

Choosing the right solar inverter size is critical—and one of the most common questions: what solar inverter size do I need?

Whether you are installing a rooftop system in California, powering a remote cabin in Alberta, or sizing for a community center in Rajasthan, getting it right means.

A perfectly sized solar inverter ensures you're maximizing the energy your panels produce, avoiding unnecessary losses, and setting your home up for long-term savings. Whether you're planning a new solar installation or upgrading your existing setup, understanding inverter sizing can feel.

Solar inverters convert the direct current (DC) electricity produced by solar panels to alternating current (AC) electricity, which is used to power home appliances and electronic devices. While there are several types of inverters including hybrid, grid-tie, and off-grid inverters they all perform.

How to determine what size inverter I need?

Before we go any further, we highly recommend that you choose a pure sine wave inverter. This type of inverter delivers high-quality electricity, similar to your utility company. This way, none of your appliances run the risk of being damaged. Now, when.

Generally, it's recommended to size the inverter to 80-100% of the DC system's rated capacity. Before determine the inverter size, the most important thing is to calculate your average daily power consumption (kWh) and calculate your solar panel array size to match your power consumption. You could.

How big an inverter should I use for a 30kw solar power station

Contact Us

For catalog requests, pricing, or partnerships, please visit:
<https://www.drugiswiatowykongrespolakow.pl>