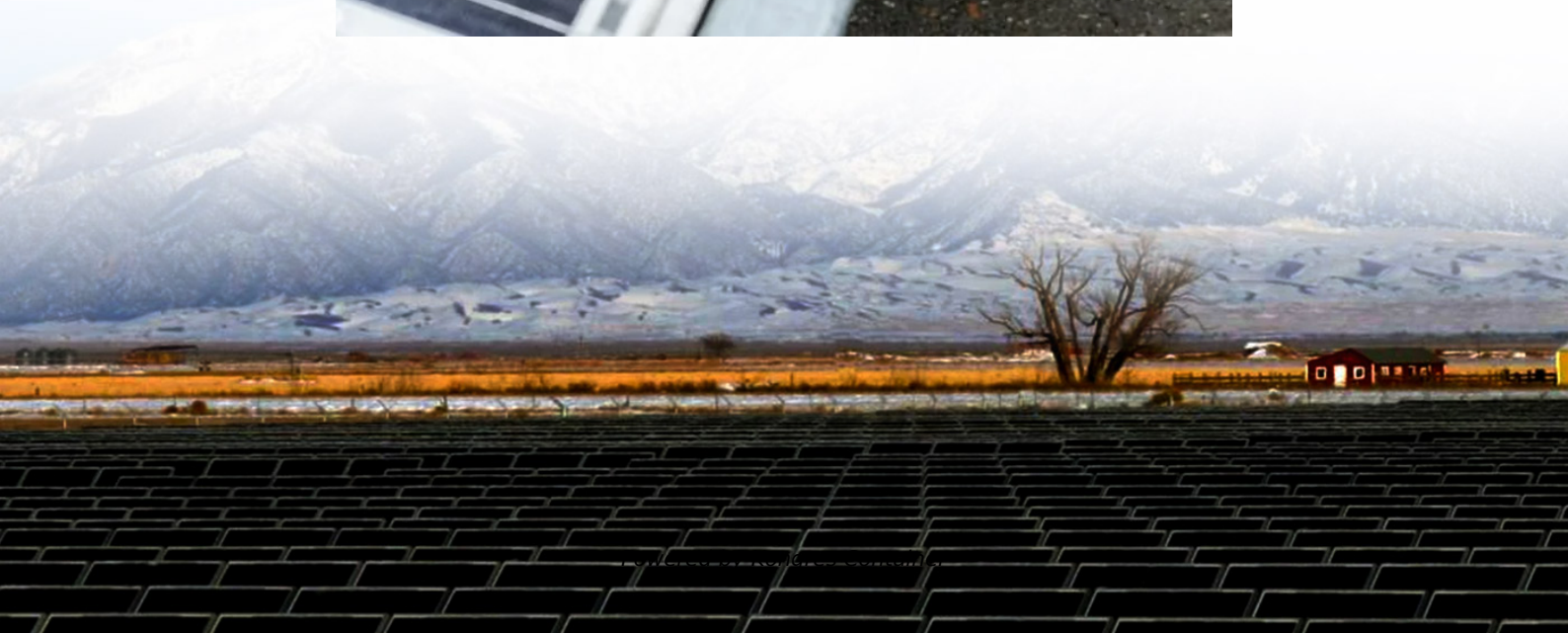
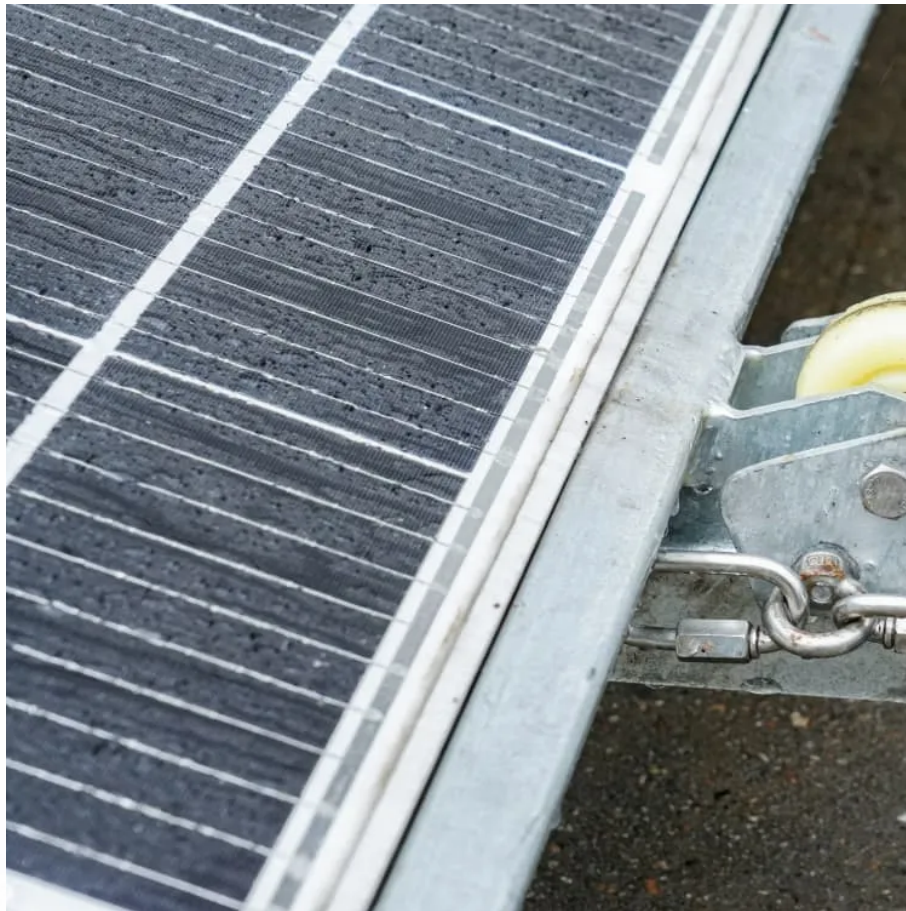


## Kongres Container

# Grid-connected inverter 12w



## Overview

---

Can grid-connected PV inverters improve utility grid stability?

Grid-connected PV inverters have traditionally been thought as active power sources with an emphasis on maximizing power extraction from the PV modules. While maximizing power transfer remains a top priority, utility grid stability is now widely acknowledged to benefit from several auxiliary services that grid-connected PV inverters may offer.

What is a grid-connected inverter?

4. Grid-connected inverter control techniques Although the main function of the grid-connected inverter (GCI) in a PV system is to ensure an efficient DC-AC energy conversion, it must also allow other functions useful to limit the effects of the unpredictable and stochastic nature of the PV source.

What is the control design of a grid connected inverter?

The control design of this type of inverter may be challenging as several algorithms are required to run the inverter. This reference design uses the C2000 microcontroller (MCU) family of devices to implement control of a grid connected inverter with output current control.

Can a grid connected inverter be left unattended?

Do not leave the design powered when unattended. Grid connected inverters (GCI) are commonly used in applications such as photovoltaic inverters to generate a regulated AC current to feed into the grid. The control design of this type of inverter may be challenging as several algorithms are required to run the inverter.

Which countries use grid-connected PV inverters?

China, the United States, India, Brazil, and Spain were the top five countries by capacity added, making up around 66 % of all newly installed capacity, up from 61 % in 2021 . Grid-connected PV inverters have traditionally been

thought as active power sources with an emphasis on maximizing power extraction from the PV modules.

How do I know if a grid connected inverter is working?

Observe the current that is shared on the load by the inverter, and the AC source. Spiking around the zero crossing can occur. These spikes may be mitigated by the user by selecting a different inverter configuration, or using a different modulation scheme. The verification of the grid connected mode of operation is complete.

## Grid-connected inverter 12w

---

## Contact Us

---

For catalog requests, pricing, or partnerships, please visit:  
<https://www.drugiswiatowykongrespolakow.pl>