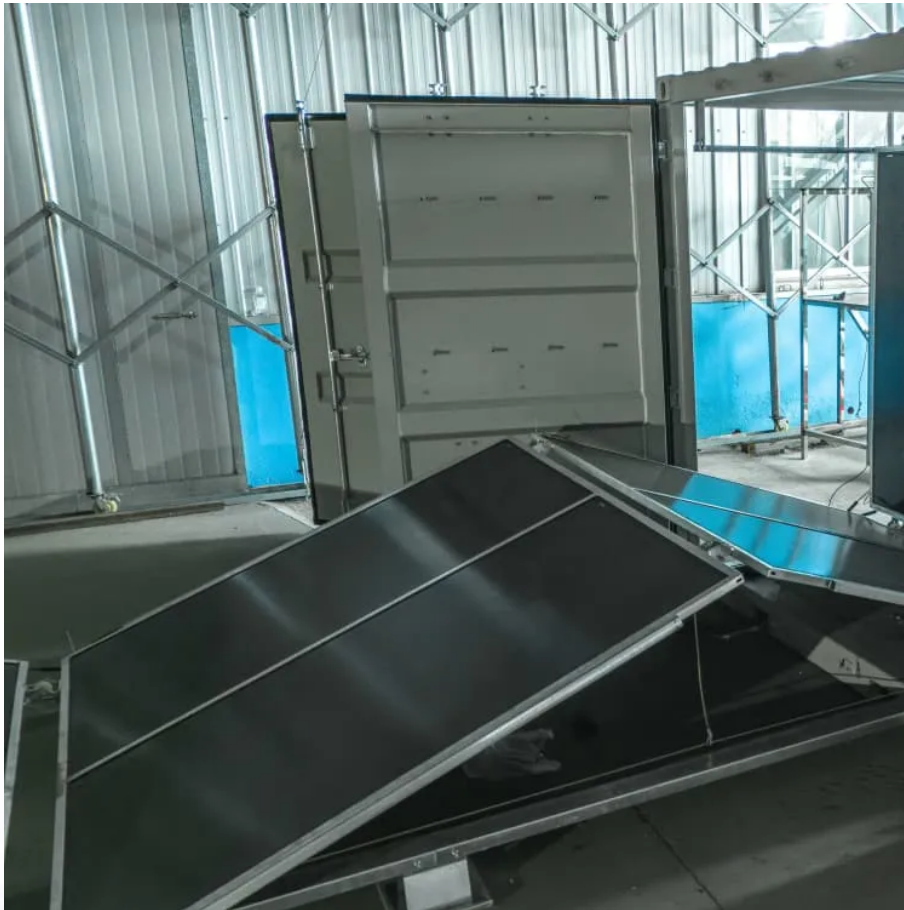


## Kongres Container

# Fiji solar power station several power plants



## Overview

---

The following is a list of photovoltaic power stations that are larger than 500 (MW) in current net capacity. Most are individual , but some are groups of owned by different and with separate connections to the grid. Wiki-Solar reports total global capacity of utility-scale photovoltaic plants.

List of power plants in Fiji from OpenStreetMap.

List of power plants in Fiji from OpenStreetMap.

Fiji has 12 utility-scale power plants in operation, with a total capacity of 317.4 MW. This data is a derivative set of data gathered by source mentioned below. Global Energy Observatory/Google/KTH Royal Institute of Technology in Stockholm/Enipedia/World Resources Institute/database.earth Data.

The following is a list of photovoltaic power stations that are larger than 500 megawatts (MW) in current net capacity. [1] Most are individual photovoltaic power stations, but some are groups of co-located plants owned by different independent power producers and with separate transformer.

In the last 5 years, there has been rapid growth in “behind the meter” solar photovoltaics (solar PV) installations for several commercial companies around the main island of Fiji, Viti Levu. In total, around 4 MW of solar PV is installed with some grid-connected solar systems planned and many.

A \$6.3 million 1.55 megawatt photovoltaic farm to be constructed on Taveuni island is expected to benefit 500 families. The Mua Solar Farm project was funded by the Korea International Cooperation Agency (KOICA), a Korean governmental organisation established in 1991 for official development.

Energy Fiji Solar PV Park is a 15MW solar PV power project. It is planned in Fiji. According to GlobalData, who tracks and profiles over 170,000 power plants worldwide, the project is currently at the dormant stage. It will be developed in a single phase. Buy the profile here. Combine business.

How many MW solar power plant in Fiji?

EFL has planned for 5 MW solar power plant in Nadi, Fiji. This would require

approximately 33,000 m<sup>2</sup> of land area and using Eq. 8.1, its generation potential is estimated to be around 9 GWh/annum. However, for diversifying Fiji's electricity supply.

## Fiji solar power station several power plants

---

### Contact Us

---

For catalog requests, pricing, or partnerships, please visit:  
<https://www.drugiswiatowykongrespolakow.pl>