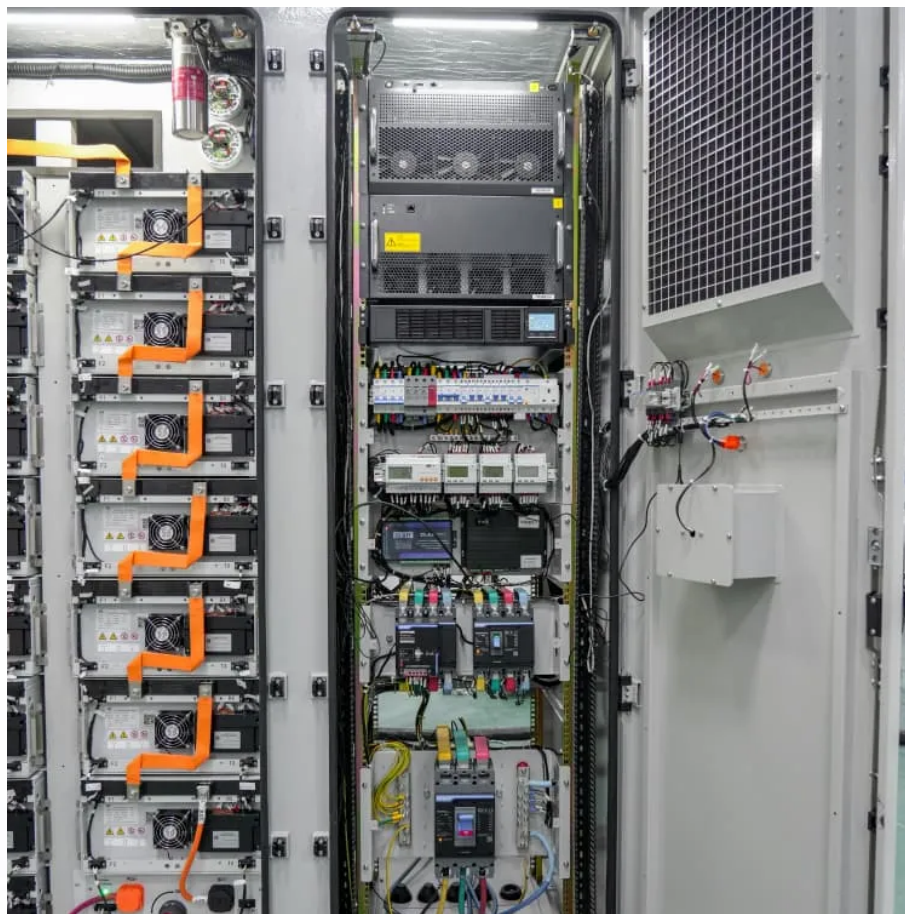


Kongres Container

Double glass component entity



Overview

Double glass solar panels are primarily composed of 1. Two layers of tempered glass, 2. Ethylene Vinyl Acetate (EVA) encapsulant, 3. High-efficiency solar cells, 4. Aluminum frame. What is a double glass solar module?

In the ever-evolving world of photovoltaic technology, double glass solar modules are emerging as a game-changer. By encapsulating solar cells between two layers of glass, these modules offer unparalleled durability and efficiency. But what exactly sets them apart?

What are double glass solar modules?

.

What is double glass PV module?

Double glass PV module is known as the ultimate solution for the module encapsulation technique. Although double glass modules have many advantages, they are not yet widely used in photovoltaic power plants, for which one important reason is the large power loss due to the transmission of light in the cell gap region.

What is the bifaciality of a double glass module?

Bifaciality: The bifaciality of double glass modules produces a gain of around 10-11% compared to the power measured on the front panel alone, for TOPCon type modules under so-called BNPI (bifacial nameplate irradiance) test conditions.

What is a double glass c-Si PV module?

Recently several double-glass (also called glass-glass or dual-glass modules) c-Si PV modules have been launched on the market, many of them by major PV manufacturers. These modules use a sheet of tempered glass at the rear of the module instead of the conventional polymer-based backsheets. There are several reasons why this structure is appealing.

Why are double glass modules symmetrical?

Mechanical constraints on cells: the fact that the structure of the double glass modules is symmetrical implies that the cells are located on a so-called neutral line, the upper part of the module being in compression during a downward mechanical load and the lower glass surface being in tension.

What is a double glass module?

In contrast, double glass modules replace the polymer layer with another glass sheet, creating a robust sandwich structure. At IBC SOLAR, we use 2,0 mm x 2,0 mm glass layers, whereas some other market offerings use thinner 1,6 mm x 1,6 mm layers. This ensures greater durability and longevity.

Double glass component entity

Contact Us

For catalog requests, pricing, or partnerships, please visit:
<https://www.drugiswiatowykongrespolakow.pl>