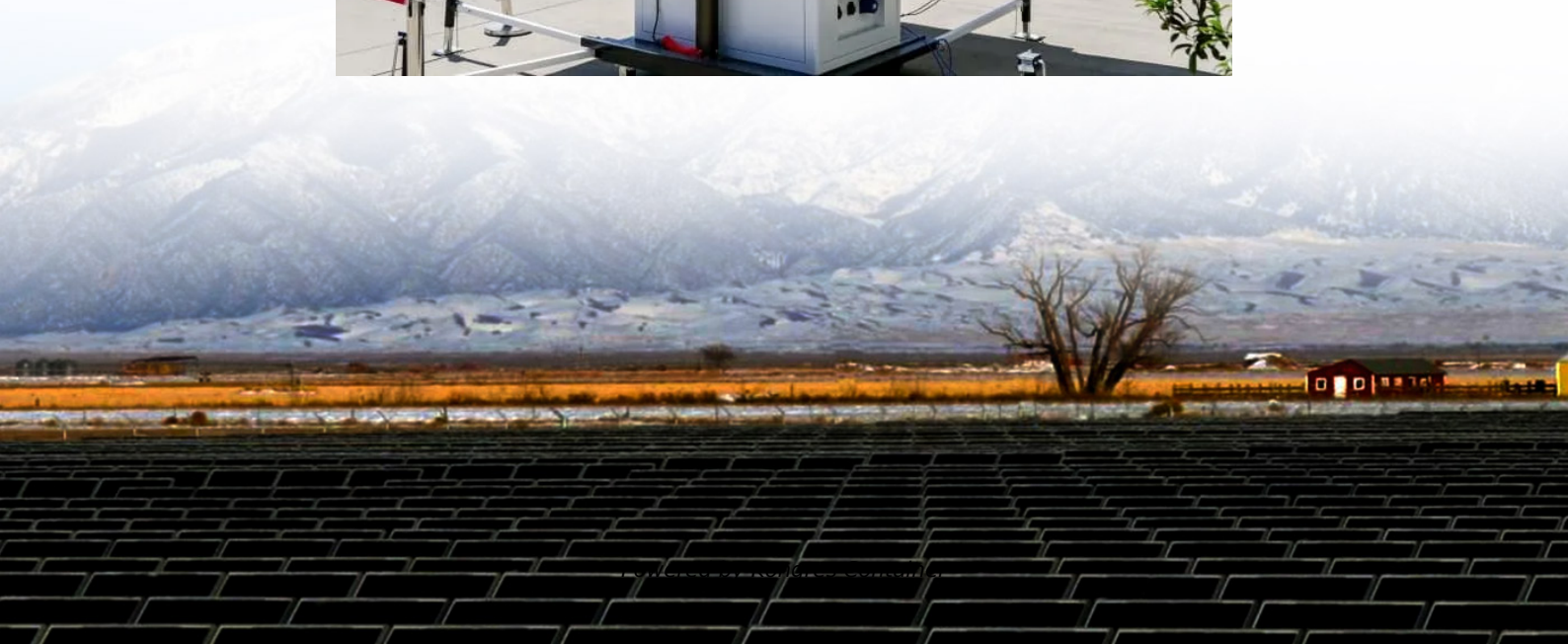


## Kongres Container

# Double glass and single glass module prices



## Overview

---

Are double-glass solar modules reactive or non-reactive?

Furthermore, comparing to plastic backsheets (the back material of single-glass solar module) which are reactive, glass is non-reactive. This means that the whole structure of Raytech double-glass solar modules (two layers of glass and one layer of solar cells in the middle) are highly resistant to chemical reactions such as corrosion as a whole.

Are double-glass modules better than single-sided glass panels?

However, advancements in glass technology have mitigated this issue to some extent. Weight: Double-glass modules are generally heavier than single-sided glass panels due to the additional glass layer. Applications: Double-glass modules are well-suited for environments with harsh weather conditions, high humidity, or corrosive elements.

Are double-glass modules better than glass-on-glass?

Aesthetics: Double-glass modules can offer a sleeker appearance due to the glass-on-glass design, which some people find more aesthetically pleasing. Cost: Double-glass modules tend to be more expensive to produce and install due to the added materials and manufacturing complexity.

What is the difference between Raytech double glass solar modules?

Whereas for Raytech double-glass solar modules, with the increased strength brought by two layers of glass, a lot less deformation will happen in the solar cells, the possibility of microcracks formed on the solar cells will decrease significantly.

What is the difference between double-glass solar panels and single-sided solar panels?

The main difference between double-glass photovoltaic modules and single-sided glass solar panels lies in their construction and design, which can impact

their durability, performance, and applications. Construction: Double-glass modules consist of two layers of glass sandwiching the solar cells and other components.

Why should you choose a double glass module?

**Durability:** Double-glass modules are more robust and resistant to environmental stressors, such as moisture, UV radiation, and temperature fluctuations. The dual glass layers provide enhanced protection against physical damage, moisture ingress, and degradation over time.

## Double glass and single glass module prices

---

### Contact Us

---

For catalog requests, pricing, or partnerships, please visit:  
<https://www.drugiswiatowykongrespolakow.pl>