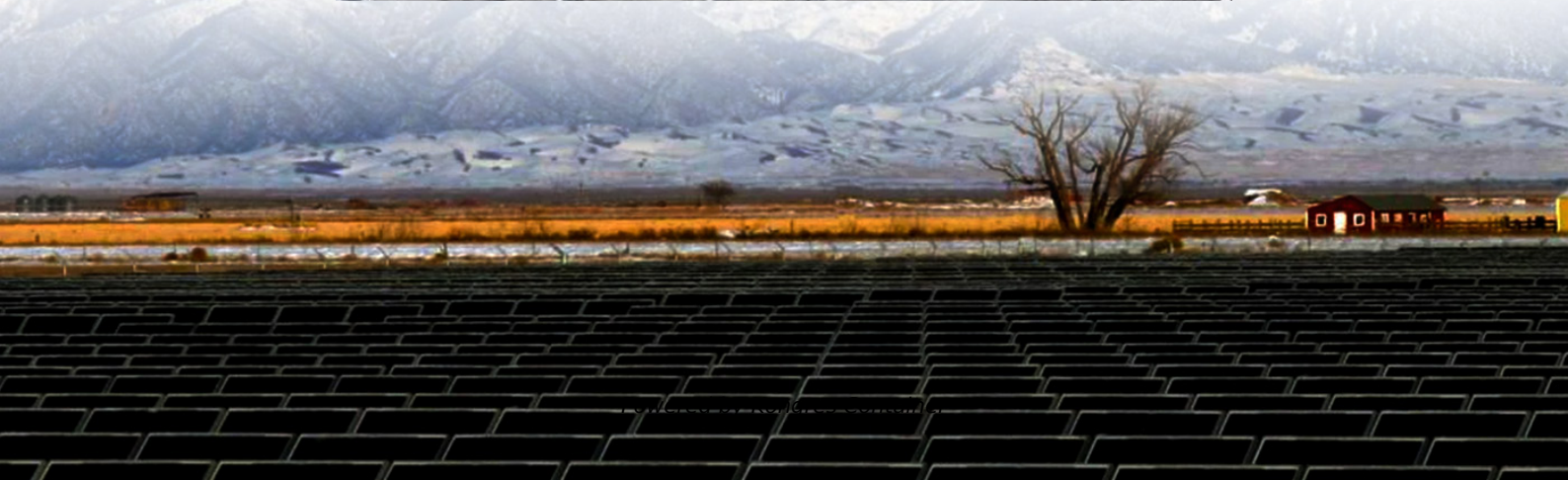
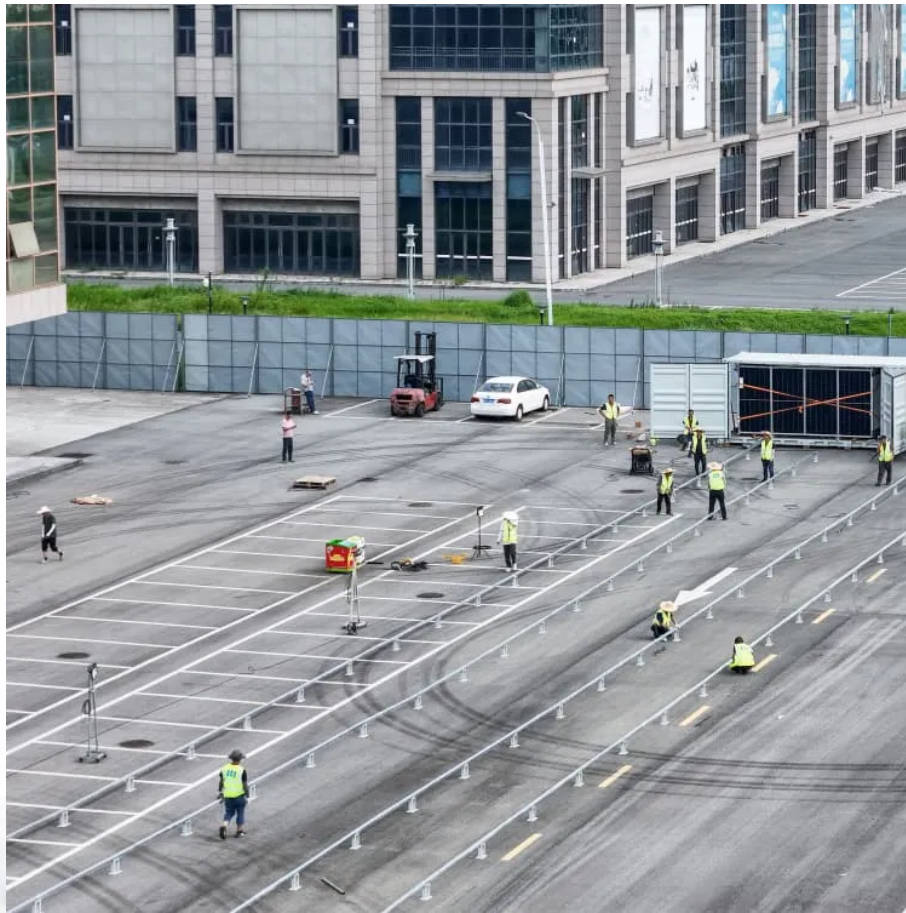


Kongres Container

Does the Mali communication base station flow battery need to be approved for construction



Overview

The Project Implementation Units (UMOP) of Mali and Niger (EDM SA – NIGELEC) as well as the Regional Coordination Unit at the ECOWAS Commission (URC) have invited bids for the Design, Supply, Installation, Operation and Maintenance of Battery Energy Storage Systems (BESS) in Mali and Niger.

The Project Implementation Units (UMOP) of Mali and Niger (EDM SA – NIGELEC) as well as the Regional Coordination Unit at the ECOWAS Commission (URC) have invited bids for the Design, Supply, Installation, Operation and Maintenance of Battery Energy Storage Systems (BESS) in Mali and Niger.

The chosen site for battery installation is the Sirakoro source station in Bamako, Mali, with a planned capacity of 80 MWh. The project encompasses equipment for battery connection to the HV busbar and all control and communication tools to facilitate the synchronous operation of the battery power.

Remote Radio Unit (RRU): Converts signals to radio frequencies for transmission. Active Antenna Unit (AAU): Integrates RRU and antenna for 5G-era efficiency. 2. Power Supply System This acts as the “blood supply” of the base station, ensuring uninterrupted power. It includes: AC distribution box:.

Why do cellular base stations have backup batteries?

] Cellular base stations (BSs) are equipped with backup batteries to obtain the uninterruptible power supply (UPS) and maintain the power supply reliability. While maintaining the reliability, the backup batteries of 5G BSs have some spare.

Does Portugal support battery energy storage projects?

Portugal has awarded grant support to around 500MW of battery energy storage system (BESS) projects, using EU Recovery and Resilience Plan (RRP) funding, a bloc-wide scheme that has supported energy storage across the

continent. Which countries.

What makes a telecom battery pack compatible with a base station?

Compatibility and Installation Voltage Compatibility: 48V is the standard voltage for telecom base stations, so the battery pack's output voltage must align with base station equipment requirements. Modular Design: A modular.

roposes one key benefit, i.e. quick recharging of the xEVs. The job is effortless, the car driver simply drives his vehicle to a battery swap station (BSS), park in a dedicated area, the battery swapped is autonomously done, and drives back after m of 5G communication base stations is also growing. What is a base station power supply?

This acts as the "blood supply" of the base station, ensuring uninterrupted power. It includes: AC distribution box: Distributes mains power and offers surge protection. Switch-mode power supply: Converts and stabilizes power while managing DC output. Battery banks: Serve as backup power to keep systems running during outages. 3.

What is a communication base station?

In the vast telecommunications network, communication base stations play a frontline role. Positioned closest to end users, they serve as gateways for processing customer requests and managing data flow. In the words of "Interesting Communication Engineering Drawings," these stations act like "business trackers," always vigilant to:

What are the benefits of a base station?

Base stations, while small in structure, are equipped with everything necessary to operate independently. They ensure: Protection against environmental factors like wind, rain, and lightning. Uninterrupted power supply through robust systems and backup solutions. Efficient signal transmission to connect users to the broader network.

What is a base station connection diagram?

The connection diagram provides a clear overview of how the main base station equipment operates within the network. Surrounding this central "brain" are the "Four Guardians" that ensure seamless functionality: Power Supply: Provides a steady and uninterrupted energy source to keep the equipment operational.

What does a base station do?

The base station, positioned between users and data centers, is the first responder to user requests. It relays signals efficiently, ensuring users stay connected. This image highlights the compact but comprehensive nature of base stations, showcasing their integration of protective enclosures, power systems, and antennas. 3.

How do outdoor base stations work?

Outdoor base stations integrate all essential systems into a single Integrated Cabinet, designed to endure harsh conditions like direct sunlight, rain, and extreme temperatures. These units protect the equipment while ensuring efficient functionality. Towers are crucial for mounting antennas at high elevations, ensuring wide signal reach.

Does the Mali communication base station flow battery need to be a

Contact Us

For catalog requests, pricing, or partnerships, please visit:
<https://www.drugiswiatowykongrespolakow.pl>