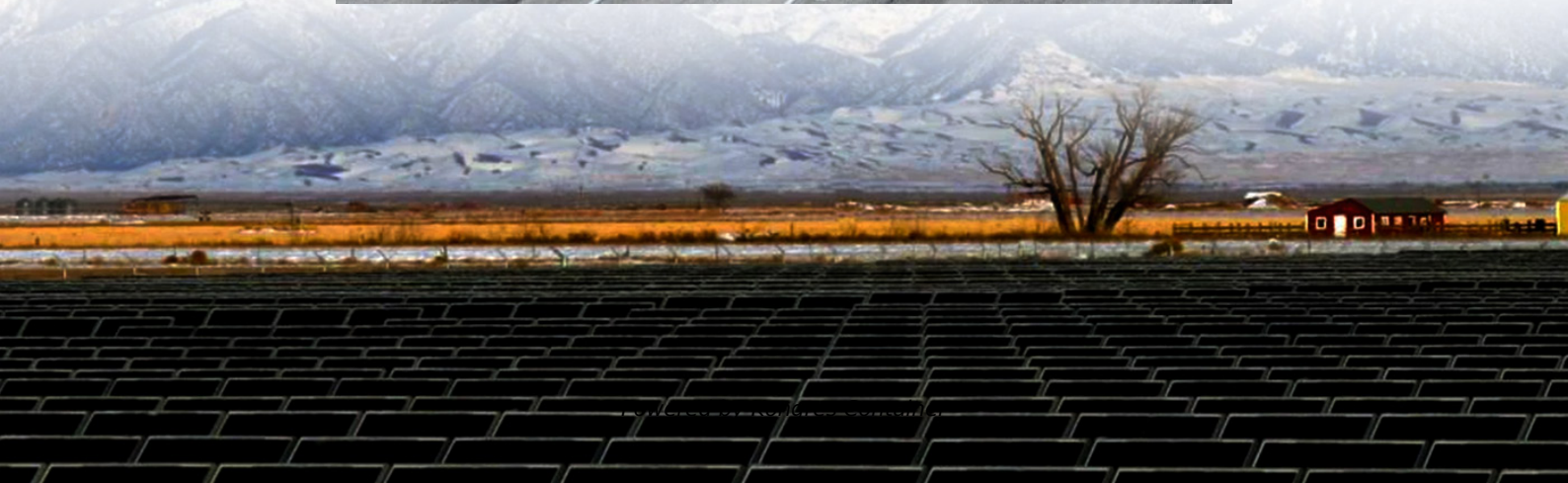
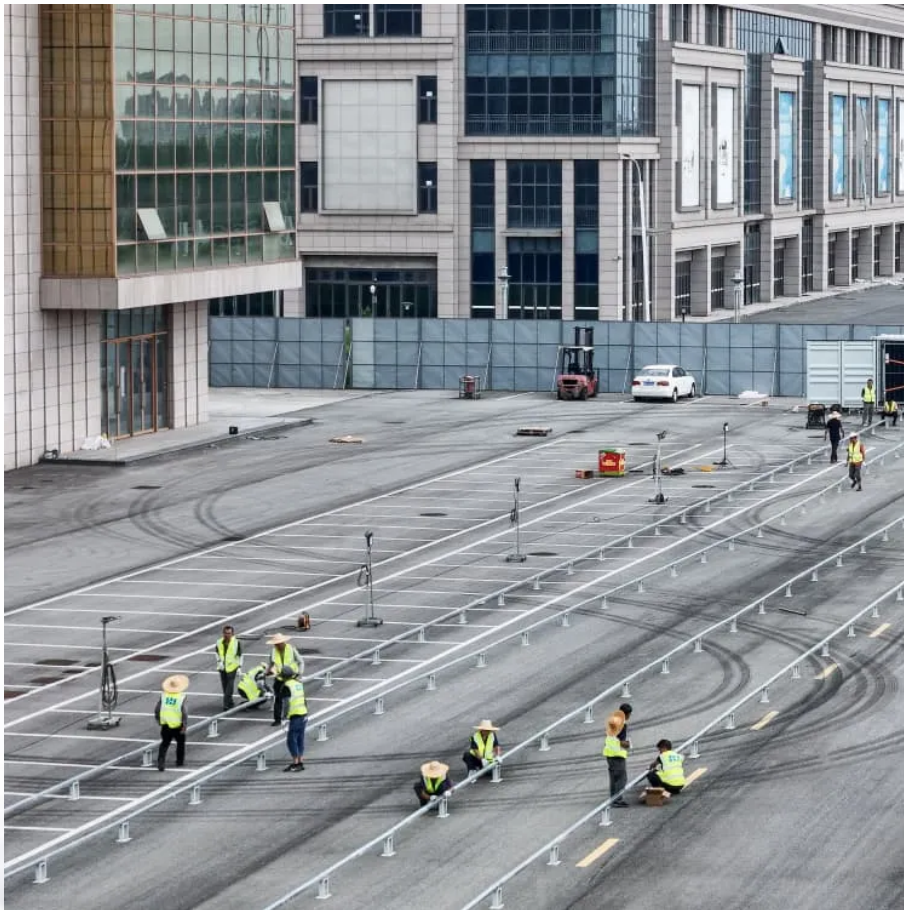


## Kongres Container

# Does the 5G communication base station inverter have a battery



## Overview

---

What are the components of a 5G base station?

Baseband Unit (BBU): Handles baseband signal processing. Remote Radio Unit (RRU): Converts signals to radio frequencies for transmission. Active Antenna Unit (AAU): Integrates RRU and antenna for 5G-era efficiency. 2. Power Supply System This acts as the “blood supply” of the base station, ensuring uninterrupted power. It includes:.

What is a 5G Brain Center?

Often referred to as the brain center, this includes: Baseband Unit (BBU): Handles baseband signal processing. Remote Radio Unit (RRU): Converts signals to radio frequencies for transmission. Active Antenna Unit (AAU): Integrates RRU and antenna for 5G-era efficiency. 2. Power Supply System.

What is a BBU in a base station?

The BBU is a key element of the base station's architecture. Unlike the large cabinet setups of the past, modern BBUs are compact and resemble distributed devices, similar in size to DVD players. Function: Processes baseband signals, which are low-frequency signals in their raw, unmodulated state.

What is a communication base station?

In the vast telecommunications network, communication base stations play a frontline role. Positioned closest to end users, they serve as gateways for processing customer requests and managing data flow. In the words of "Interesting Communication Engineering Drawings," these stations act like “business trackers,” always vigilant to:

## Does the 5G communication base station inverter have a battery

---

### Contact Us

---

For catalog requests, pricing, or partnerships, please visit:  
<https://www.drugiswiatowykongrespolakow.pl>