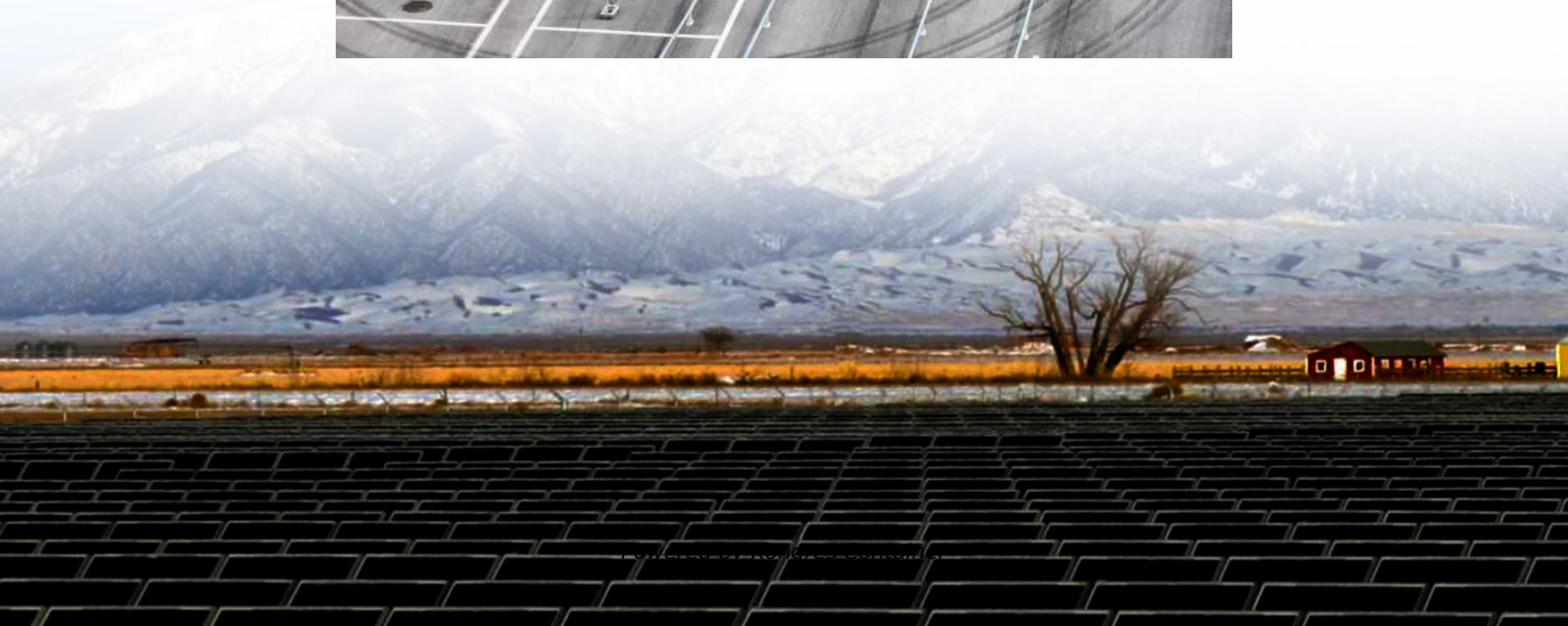
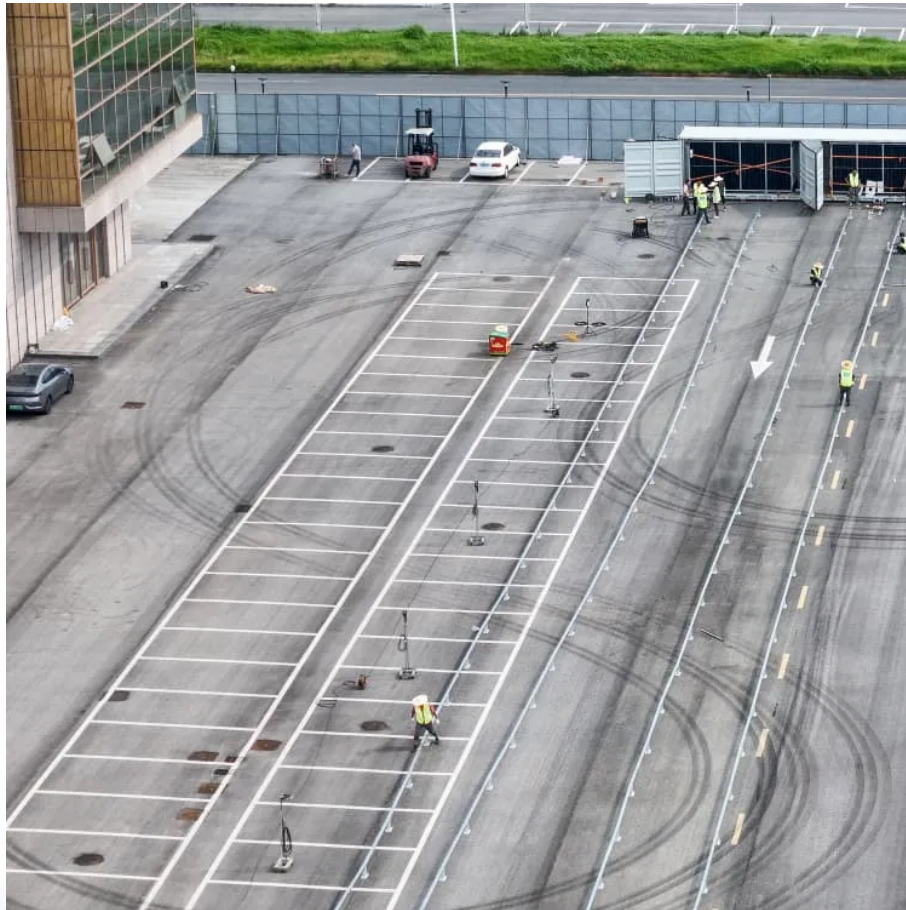


Kongres Container

Construction conditions for curtain wall solar in Nauru



Overview

Curtain wall photovoltaic construction in Nauru requires careful balancing of technical specifications, environmental factors, and regulatory compliance. When executed properly, these systems can provide 30–40% of a building's energy needs while withstanding tropical climate challenges. What is photovoltaic curtain wall?

Photovoltaic Curtain Wall generates energy in the building implementing solar control by filtering effect, avoiding infrared and UV irradiation to the interior.

What are the physical properties of photovoltaic curtain wall (roof) system?

The physical properties of the photovoltaic curtain wall (roof) system mainly include wind pressure resistance, water tightness, air tightness, thermal performance, air sound insulation performance, in-plane deformation performance, seismic requirements, impact resistance performance, lighting performance, etc.

Which solar cells are used in photovoltaic curtain wall?

At present, crystalline silicon solar cells and amorphous silicon solar cells are mainly used in photovoltaic curtain wall (roofing) systems. Photovoltaic glass modules have different color effects depending on the type of product used.

What is a curtain wall?

Curtain walling refers to a non-structural cladding system made from fabricated aluminum, commonly used on the outer walls of tall multi-storey buildings. This lightweight material offers ease of installation and can be customized to be glazed, opaque, or equipped with infill panels.

Construction conditions for curtain wall solar in Nauru

Contact Us

For catalog requests, pricing, or partnerships, please visit:
<https://www.drugiswiatowykongrespolakow.pl>