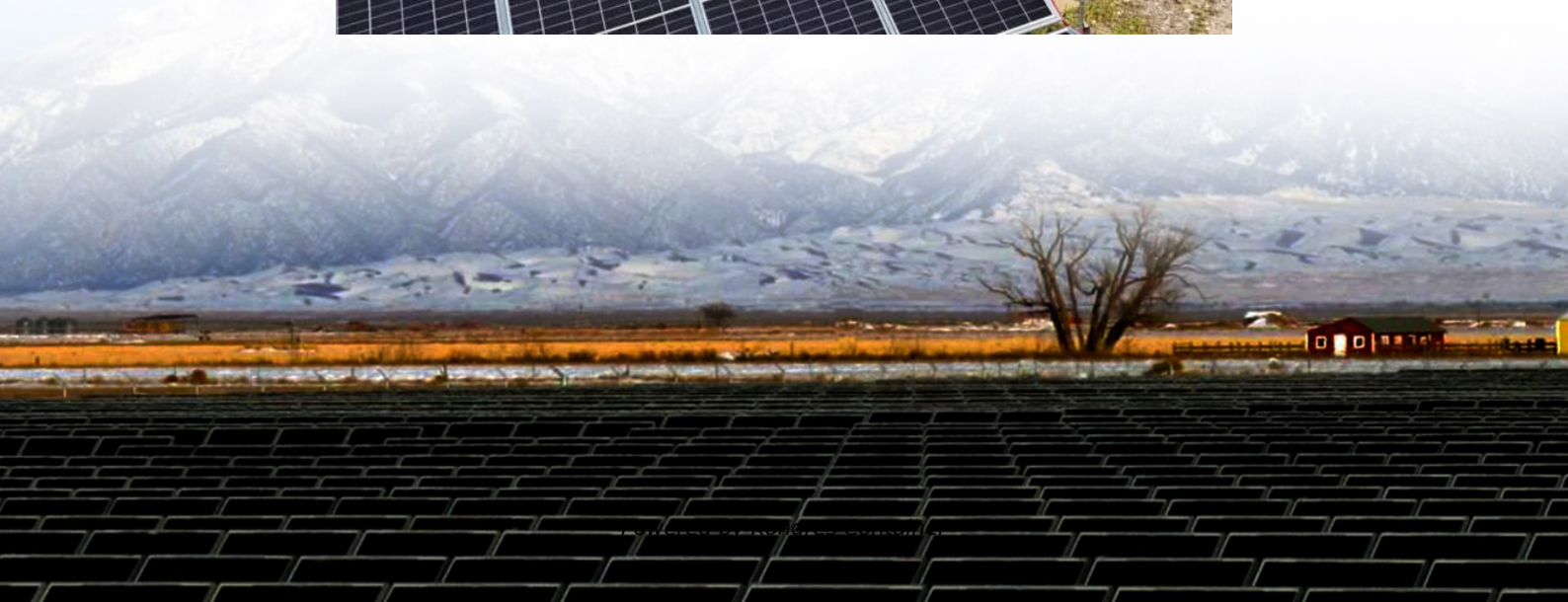


## Kongres Container

# Communication construction base station design plan



## Overview

---

What is design and planning of a base transceiver station?

This project work is titled design and planning of a base transceiver station. A BTS is also known as a base station (BS), radio base station (RBS) or node B (eNB). A base transceiver station (BTS) facilitates wireless communication between user equipment (UE) and a network.

What is the purpose of a base station?

The aim of this work is to design and plan a base station that can facilitates wireless communication between user equipment (UE) and a network. Communication as an important aspect of human life. As man continues daily life. The need to continually communicate, acquire and share information becomes more obvious.

What is a communication base station?

In the vast telecommunications network, communication base stations play a frontline role. Positioned closest to end users, they serve as gateways for processing customer requests and managing data flow. In the words of "Interesting Communication Engineering Drawings," these stations act like "business trackers," always vigilant to:

What is a base station connection diagram?

The connection diagram provides a clear overview of how the main base station equipment operates within the network. Surrounding this central "brain" are the "Four Guardians" that ensure seamless functionality: Power Supply: Provides a steady and uninterrupted energy source to keep the equipment operational.

What is a base transceiver station?

As part of a cellular network, a base transceiver station (BTS) has equipment for the encryption and decryption of communications, spectrum filtering

equipment, antennas and transceivers (TRX) to name a few. A BTS typically has multiple transceivers that allow it to serve many of the cell's different frequencies and sectors.

What is a block diagram of a base station?

The block diagram of a base station typically includes the following key components: Baseband Processor: The baseband processor too deals with different communication protocols and interfaces with mobile network infrastructure. Duplexer: The duplexer enables the employment of a single antenna for both transmission and reception.

## Communication construction base station design plan

---

### Contact Us

---

For catalog requests, pricing, or partnerships, please visit:  
<https://www.drugiswiatowykongrespolakow.pl>