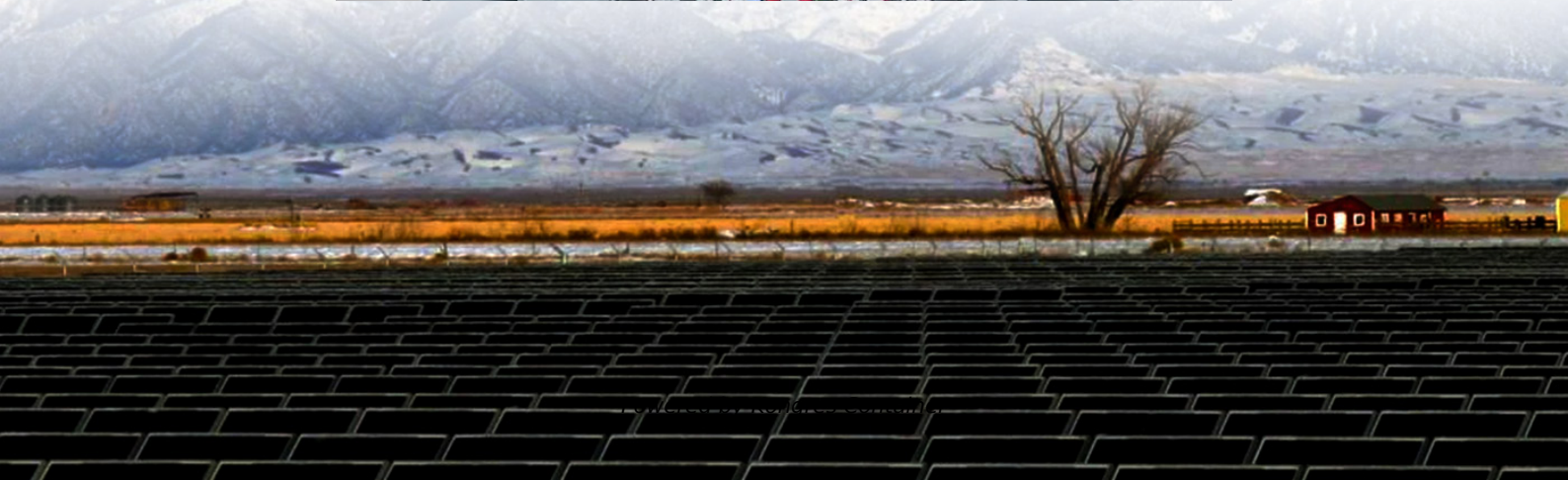
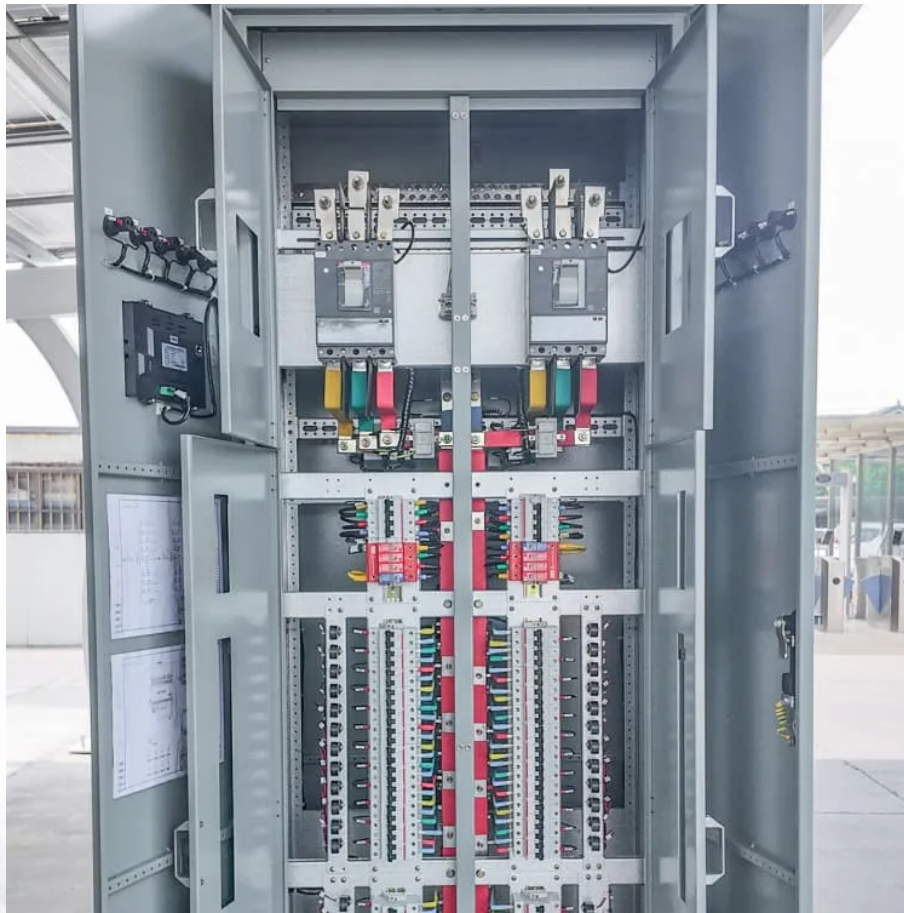


Kongres Container

Commercial communication base station wind and solar complementarity



Overview

A communication base station, wind-solar complementary technology, applied in the field of new energy communication, can solve the problems of inability to utilize wind energy to a greater extent, inconvenience, control of fan blades, etc., so as to improve the utilization rate of wind energy, reduce the probability of damage, and increase the contact area. Does complementarity support integration of wind and solar resources?

Monforti et al. assessed the complementarity between wind and solar resources in Italy through Pearson correlation analysis and found that their complementarity can favourably support their integration into the energy system. Jurasz et al. simulated the operation of wind-solar HES for 86 locations in Poland.

Do wind and solar resources have a complementarity metric system?

To this end, we propose a novel variation-based complementarity metrics system based on the description of series' fluctuation characteristics from quantitative and contoured dimensions. From this, the complementarity between wind and solar resources in China is assessed, and the trend and persistence are tested.

Where is the complementarity of wind and solar resources in China?

It can be seen from the spatial distribution that wind and solar resource complementarity is relatively high in northwest, northeast, and central China, while the complementarity in the southwest and southern areas of China is relatively low.

Are wind and solar resources complementary?

Kapica et al. employed Kendall's correlation coefficient to develop an atlas of the global complementarity between wind and solar resources. On the basis of correlation theory, when the time series of wind and solar resource show a strong negative correlation, they would be considered to be highly complementary.

Is a variation-based complementarity metrics system effective?

In conclusion, the proposed variation-based complementarity metrics system provides an effective tool for comprehensively assessing the complementarity among multiple energy resources.

Which regions have a weak complementarity between wind and solar energy?

However, for the regions with relatively poor wind and solar resources, such as central Tibet, eastern Sichuan, western Yunnan, Chongqing, Guizhou, Zhejiang, Guangdong, and Guangxi, the complementarity is relatively weak.

Commercial communication base station wind and solar complemen

Contact Us

For catalog requests, pricing, or partnerships, please visit:
<https://www.drugiswiatowykongrespolakow.pl>